

# Redditch Borough Council

## Playing Pitch Strategy – Stage C

A report by Strategic Leisure Limited

October 2023



---

# Redditch Borough Council

## *Playing Pitch Strategy – Stage C Assessment*

---

### Contents

<b>1.</b>	<b>Introduction and Methodology</b>	<b>1</b>
	Study Area	1
	Project Scope and Objectives	3
	Methodology	4
	Report structure	7
<b>2.</b>	<b>Strategic Context</b>	<b>8</b>
	The Study Area	8
	Redditch Borough	8
	Redditch Borough Council Local Authority Area	8
	Planning Policy	8
	Redditch Local Plan	9
	Key Issues for Redditch Borough in relation to playing pitch provision	9
	Overarching framework	9
	How far forward will the PPOSS look?	10
	Strategic Policy and Context	10
	National Planning Policy Framework (NPPF)	10
	Sport England Definitions	12
	A New Strategy for Sport – Department for Culture, Media and Sport	12
	Sport England Strategy 2021- 2031 ‘Uniting the Movement’	13
	Local Level	15
	Population Profiles and Projections	15
	Ethnicity	16
	Deprivation	16
	Health	17
<b>3.</b>	<b>Artificial Grass Pitch (AGP) Analysis</b>	<b>19</b>
	Introduction	19
	3G AGP Usage for Football	19
	3G AGP Usage for Rugby	19
	Supply	20
	Imported/Exported Demand	23

---

# Redditch Borough Council

## *Playing Pitch Strategy – Stage C Assessment*

---

Current Supply and Demand	23
Combined Supply and Demand Analysis for Football and Hockey.	23
Informal Demand	25
Current Supply and Demand Modelling – Full Size 3G AGP Provision (Football)	26
AGP Future Supply and Demand Balance	27
AGP Future Demand – Rugby Union and Hockey	28
Meeting the Current and Future Demand for 3G AGP Facilities Across Redditch	28
AGP summary	29
<b>4. Football Analysis</b>	<b>31</b>
Introduction	31
Strategic Priorities for Football	31
Football Stage C Assessment	33
Supply	33
Secured and Unsecured Community Use Pitches used in the 2021/22 Season	35
Education Supply	35
Disused Provision	36
Future Provision and Proposed Supply Changes	36
Imported/Exported Demand	37
Current Position for football	37
Ancillary Facilities	39
Current Demand	40
Demand Driven by Unmet Demand	42
Demand Driven by Latent Demand	42
Displaced Demand	43
Future Demand	44
Demand Driven by Population Growth	44
Football Supply and Demand information	45
Adult 11v11 Analysis total Peak Capacity	49
Youth 11 v 11 Analysis - Peak	49
Youth 9 v 9 Analysis Peak	50
Mini 7 v 7 pitch supply Peak	50
Mini 5 v 5 pitch supply Peak	51
Football Summary	51
Football Summary	52

---

# Redditch Borough Council

## *Playing Pitch Strategy – Stage C Assessment*

---

	Football Summary	53
<b>5.</b>	<b>Hockey Analysis</b>	<b>54</b>
	Introduction and Strategic Context	54
	England Hockey Facilities Strategy (2017)	54
	Supply	55
	Ancillary Facilities	58
	Current Demand	58
	Pitch Usage	59
	Future Demand	60
	Demand driven by Population Growth	60
	Demand Driven by Latent Demand	61
	Demand Driven by Informal Demand	61
	Supply and Demand Balance	61
	Supply and Demand Balance – Spatial Analysis	61
	Peak Time Capacity Analysis	62
	Site by Site Analysis	63
	Capacity Analysis	64
	Hockey Summary	65
<b>6.</b>	<b>Rugby Union Analysis</b>	<b>67</b>
	Introduction and Strategic Context	67
	RFU Strategic Plan (2021 Onwards)	67
	England Rugby Women and Girls Action Plan (2021-2027)	68
	Supply	69
	Quantity Overview	69
	Quality Assessment	70
	Current Demand	73
	Future Demand	73
	Future Demand driven by Population growth	73
	Future Demand driven by Latent demand	75
	Supply and Demand Balance	75
	Peak Time Capacity	76
	Current and Future Position	78
	Site by Site Analysis	79

---

# Redditch Borough Council

## *Playing Pitch Strategy – Stage C Assessment*

---

	Rugby Union Summary	79
<b>7.</b>	<b>Cricket Analysis</b>	<b>81</b>
	Introduction and Strategic Context	81
	Inspiring Generations (2019 - 2024)	81
	Development Priorities	82
	All Stars Cricket (2017)	82
	Women’s and Girls’	82
	Consultation overview	82
	Sub Areas	83
	Supply	83
	Tenure and Management	85
	Quality Assessment	85
	Current Demand	87
	Club and Team Profile	87
	Future Demand	88
	Demand Driven by Population Growth	88
	Future growth driven by latent demand	89
	Combined project growth in teams	89
	Supply and Demand Balance	90
	Spare capacity and overplay	90
	Site by Site Analysis	93
	Current and Future Position for Grass Pitches	94
	Understanding the Process and Key Terminology	94
	Total Wicket Analysis	95
	Cricket summary	96
<b>8.</b>	<b>Tennis Analysis</b>	<b>96</b>
	Introduction and Strategic Context	97
	Recommendations moving forward	97
	Tennis Opened Up 2019-2023	97
	Supply	99
	Demand	103
	Active Lives Survey	103

---

# Redditch Borough Council

## *Playing Pitch Strategy – Stage C Assessment*

---

Membership Data	103
Future Demand	104
Supply and Demand Balance	105
Club Balance	105
Public Courts	105
Tennis Summary	106
<b>9. Netball Analysis</b>	<b>109</b>
Introduction and Strategic Context	109
Vision, Mission and Values	109
Strategic Goals	109
Guiding Principles	110
Delivery Methods	110
Supply	111
Demand	114
Future Demand	114
Netball Summary	115
<b>10. Outdoor Bowls Analysis</b>	<b>117</b>
Introduction and Strategic Context	117
Strategic Plan – Fit for the Future 2021 – 2026	117
Supply	118
Club and Site Consultation	120
Demand for Outdoor Bowls Facilities	120
Demand for Outdoor Bowls Facilities	121
Bowls Summary	121
Disclaimer	123

---

# Redditch Borough Council

## *Playing Pitch Strategy – Stage C Assessment*

---

### Table Listings

Table 1:	AGP Audit	21
Table 2:	Supply and Demand Analysis for all available 3G AGP Provision	24
Table 3:	Current Capacity Analysis for AGPs	26
Table 4:	Future Capacity Analysis for AGPs	27
Table 5:	Key PPOSS Findings for AGPs in Redditch	29
Table 6:	Summary of Grass Football Pitches in Redditch.	33
Table 7:	Secured and Unsecured Community Use Pitches 2020/21 Football season	35
Table 8:	Education Facilities Unavailable for Community Use	35
Table 9:	Disused Pitches Redditch	36
Table 10:	Development Proposals	37
Table 11:	Pitch Quality in Redditch – Total	38
Table 12:	Site by site analysis of ancillary facility quality.	39
Table 13:	Club Consultation	40
Table 14:	Pan-Disability Football Provision	41
Table 15:	Football Provision	41
Table 16:	Female Only Football Provision	42
Table 17:	Latent demand highlighted through consultation	43
Table 18:	Future demand driven by population growth	44
Table 19:	Carrying Capacity per Pitch Type. All Figures in MES	45
Table 20:	An overview of all pitch capacity and demand across all available sites across Redditch and pitch type	46
Table 21:	Adult 11v11 Supply and Demand Analysis - Peak. All Figures in MES	49
Table 22:	Youth 11v11 Supply and Demand Analysis - Peak. All Figures in MES	49
Table 23:	Youth 9v9 Supply and Demand Analysis. All Figures in MES	50
Table 24:	Mini 7v7 Supply and Demand Analysis. All Figures in MES	50
Table 25:	Mini 7v7 Supply and Demand Analysis. All Figures in MES	51
Table 26:	Key PPOSS findings for football in the Redditch study area	53
Table 27:	England Hockey Guidelines on Artificial Surface Types Suitable for Hockey	55
Table 28:	Quantity Overview for Hockey Facilities in Redditch	56
Table 29:	Quality Overview for Hockey Facilities in Redditch	58
Table 30:	Match Demand for Hockey in Redditch	59
Table 31:	Training Demand for Hockey in Redditch	59
Table 32:	Supply and Demand Analysis for all Hockey Provision	59
Table 33:	Future Demand Projections for Hockey Teams in Redditch	60

---

## Redditch Borough Council

### *Playing Pitch Strategy – Stage C Assessment*

---

Table 34:	Supply and Demand Balance for Hockey in Redditch	62
Table 35:	Supply and Demand Balance for Hockey in Redditch with football usage included	62
Table 36:	Peak Time Capacity Analysis for Redditch Hockey Provision (Calculated in Match Slots)	63
Table 37:	Site by Site Analysis for Available Hockey Sites	64
Table 38:	Summary of Capacity Balances for Hockey (Hours)	64
Table 39:	Key PPOSS Findings for Hockey in Redditch	65
Table 40:	Ownership of Rugby Pitches in Redditch	69
Table 41:	Rugby Site Breakdown of Security of Community Use	69
Table 42:	Rugby Pitch Maintenance Quality Assessment Specifications. Source: RFU PPOSS Guidance	70
Table 43:	Rugby Pitch Drainage Quality Assessment Specifications. Source: RFU PPOSS Guidance	70
Table 44:	Match Equivalent Calculation for Rugby Pitches. Source: Appendices 4a to 4c – Rugby Football Union	71
Table 45:	Quality Summary by Pitch Type	71
Table 46:	Rugby Club Profiles for Responding Clubs. Source: PPOSS Club Consultations	73
Table 47:	Summary of Demand Consultations from Rugby Clubs in Redditch	73
Table 48:	Future population projections for Redditch (2020 – 2040)	74
Table 49:	Future Demand Projections for Rugby Union Teams in Redditch Based on TGR Data	74
Table 50:	Latent Demand for Rugby Union in Redditch	75
Table 51:	Peak Time Capacity at Rugby Club Sites	76
Table 52:	Supply and Demand Capacity Balance by Site (All Figures in MES)	77
Table 53:	Current and Future Position for All Community Available Rugby Grass Provision	78
Table 54:	Site by Site Analysis for Rugby Union Sites	79
Table 55:	Key PPOSS Findings for Rugby Union in Redditch	80
Table 56:	Redditch Cricket Club Consultation Summary	83
Table 57:	Supply of Cricket Pitches in Redditch	83
Table 58:	Cricket Site Ownership and Management in Redditch	85
Table 59:	Summary of Cricket Pitch Scoring in Redditch by Sub Area	86
Table 60:	Cricket Site Breakdown in Redditch	86
Table 61:	Cricket Club Profiles	87
Table 62:	Impact of Population Projections on the Need for Cricket Provision in Redditch (TGRs by Sub Area)	88
Table 63:	Latent Demand for Cricket by Sub Area	89
Table 64:	Total projected future cricket team growth by Sub Area	89
Table 65:	Current Position for Cricket in Redditch	91
Table 66:	Site by Site Summary for Cricket Provision in Redditch	93
Table 67:	Table 13: Current and Future Position for Adult Wickets	95
Table 68:	Key PPOSS Findings for Cricket in Redditch	96
Table 69:	LTA Quality Rating Criteria	99

---

# Redditch Borough Council

## *Playing Pitch Strategy – Stage C Assessment*

---

Table 70: Outdoor Tennis Provision by Site	99
Table 71: Outdoor Tennis Ancillary Provision by Site	100
Table 72: Key Site Summaries	100
Table 73: Tennis Club Membership in Redditch	104
Table 74: Future Population Projections	104
Table 75: Future Demand Estimates	104
Table 76: Current and Projected Utilisation of Tennis Club Courts in Redditch	105
Table 77: Key PPOSS Findings for Tennis in Redditch	107
Table 78: Outdoor Netball Facilities in Redditch	111
Table 79: Outdoor Netball Facilities in Redditch	112
Table 80: Demand for Netball in Redditch	114
Table 81: Key PPOSS Findings for Netball in Redditch	115
Table 82: Ownership and Management of Bowls Sites in Redditch	118
Table 83: Bowls Sites in Redditch (clubs marked with a * are not affiliated clubs)	118
Table 84: Selected Site and Club Consultation Summaries	120
Table 85: Club Demand on Each Site	120
Table 86: Key PPOSS Findings for Bowls in Redditch	122

### Map Listing

Map 1: The Study Area	1
Map 2: AGPs in Redditch	22
Map 3: All Pitches across Redditch	34
Map 4: Hockey Pitches in Redditch	57
Map 5: All Rugby Pitches across Redditch	72
Map 6: All Cricket Sites across Redditch	84
Map 7: Outdoor Tennis Courts across Redditch	102
Map 8: Outdoor Netball Courts across Redditch	113
Map 9: Outdoor Bowling Greens Audit in Redditch	119

## 1. Introduction and Methodology

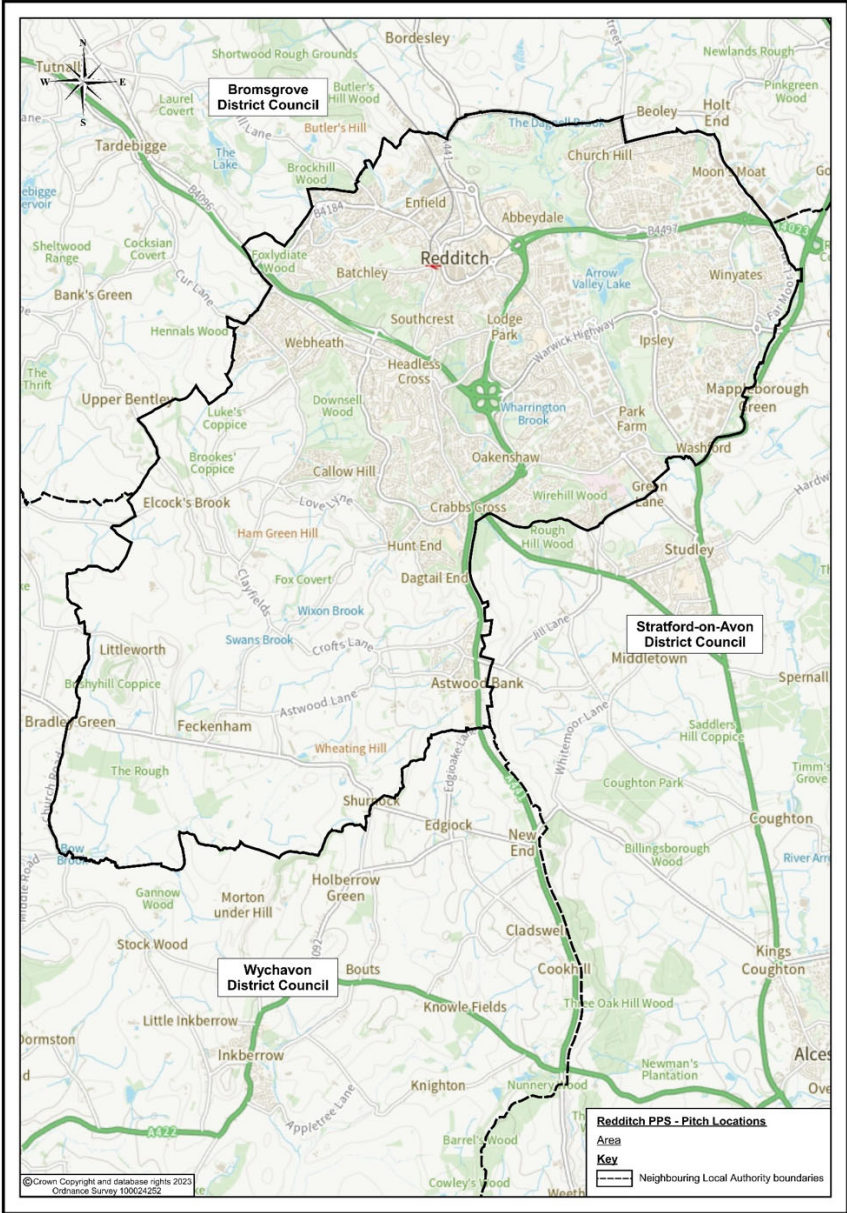
### Study Area

- 1.1. The study area is the Redditch Borough Council boundary area. For the purpose of the PPOSS, Redditch is to be looked at as one single area.

**Map 1: The Study Area**

# Redditch Borough Council

## Playing Pitch Strategy – Stage C Assessment



### Project Scope and Objectives

- 1.2. Bromsgrove District and Redditch Borough Councils have commissioned Strategic Leisure Ltd to prepare a Playing Pitch and Outdoor Sports Strategy (PPOSS), to provide the Council with a clear evidence base and set of recommendations for future outdoor sports facility development across the district.
- 1.3. A PPOSS is a strategic assessment that provides an up-to-date analysis of supply and demand for playing pitches (grass and artificial) in the local authority. The strategy and the evidence base upon which it is based is delivered using national guidance and facility insight from specific Governing Bodies of Sport. The assessment will focus on facilities used by the following sports:
  - Football
  - Rugby Union
  - Cricket
  - Hockey
  - Tennis
  - Netball
  - Outdoor Bowls.
- 1.4. Within these sports, the strategy will seek as far as is practicable to include consideration of all forms of play, whether;
  - Club and league based (formal) play and training
  - Less formal programmed forms of the respective sports (e.g., Rush Hockey, Mash-up Football, All Stars Cricket, and Touch Rugby)
  - Informal and un-programmed play by groups of residents, workers, students, school friends (out of school).
- 1.5. The PPOSS will provide a holistic analysis of sports facilities across the Study Area, leading to a comprehensive set of recommendations for the future development of facilities, in line with the needs of local residents.
- 1.6. The consultant team has worked with the Council to provide a strategy that is fit-for-purpose and addresses the specific issues and risks for the area. It is key that this Playing Pitch Strategy reflects the local context and enables the Council to maximise the amount of high-quality sporting provision for its residents, while understanding the need to meet planning and housing requirements.
- 1.7. The PPOSS will sit alongside a wider suit of planning documents that cover Leisure and Culture in its widest sense and will focus on furthering the Council's ambitions to increase active and creative behaviours and connection to open space for all its residents in the hope of decreasing the life expectancy divide in our communities.

---

## Redditch Borough Council

### *Playing Pitch Strategy – Stage C Assessment*

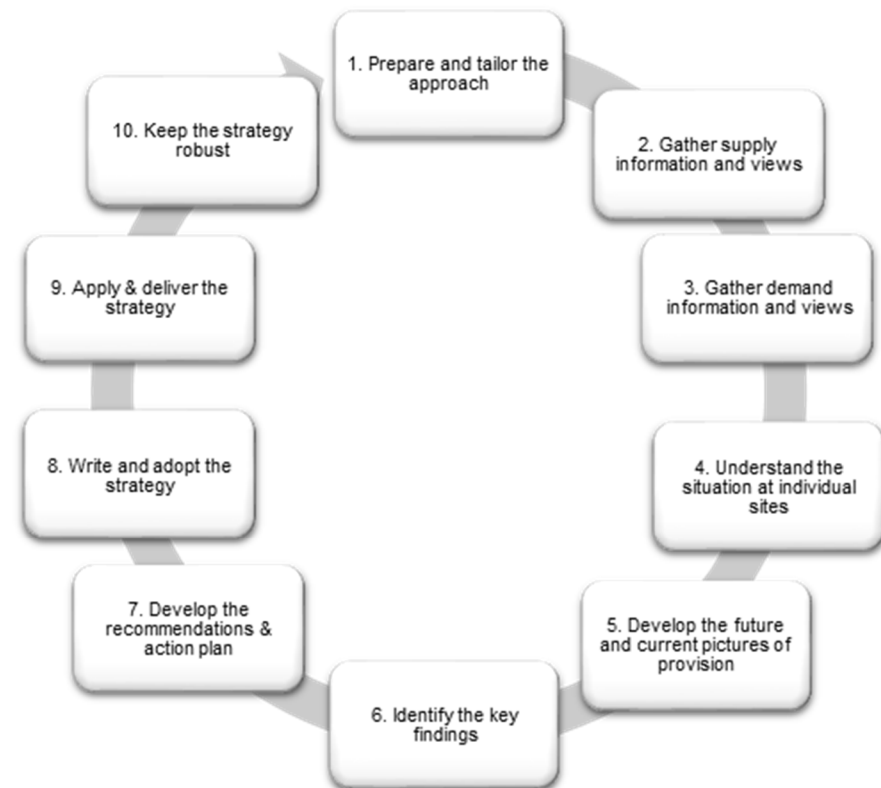
---

- 1.8. The works will include the audit of existing leisure and culture provision (heritage, arts, culture, events, sports, physical activity, open space and parks), current and predicted future demand for this provision, and the identification of key issues and challenges that create barriers to increasing participation in leisure and culture.
- 1.9. The various strands of this strategy will be clearly interconnected. This will include, where it is reasonably practicable, running in parallel with the development of the Local Plan in both Planning Authority areas. This way any proposed PPOSS and Outdoor Sports Strategy will identify suitable outdoor provision according to where housing growth is expected to arise in the two areas.

### Methodology

- 1.10. The assessment methodology adopted for the PPOSS follows the published guidance from Sport England. The guidance used is the 2013 version, Playing Pitch Strategy Guidance – An Approach to Developing and Delivering a Playing Pitch Strategy<sup>1</sup>. Figure 1.1 summarises the approach proposed in this guidance and is broken down into 10 steps.

**Figure 1: Developing and Delivering a Playing Pitch Strategy – The 10 Step Approach (Sport England, 2013)**



---

## Redditch Borough Council

### *Playing Pitch Strategy – Stage C Assessment*

---

- 1.11. Stage B of the PPS methodology involves the gathering of supply and demand information from a range of sources. An initial audit of outdoor sports facilities is gathered using Sport England's Active Places Power (APP) online tool. This audit will then form the basis of the supply information, before being informed through other sources. Non-technical site assessments, club surveys, and Council officer and NGB consultation will also influence this information before it is presented at Stage B.
- 1.12. The supply information at Stage B should include the following:
- Site name and location
  - Ownership and management type
  - Number and type of pitches
  - Accessibility
  - Pitch and ancillary facility quality
  - Maintenance information
  - Security of tenure or community use agreements
  - The views of users, providers and other relevant groups.
- 1.13. In addition to supply data, it is important to gather information regarding the demand for outdoor sports facilities. Using information provided by NGBs at Stage A, club affiliation data, league secretaries, education information and club surveys etc, it is possible to build an accurate picture of the demand for that each specific site caters for. The demand information required to inform the PPOSS is as follows:
- Sport clubs matches and training
  - Casual and other demand
  - Educational demand
  - Displaced demand
  - Unmet and latent demand
  - Trends and changes
  - Future demand
- 1.14. All pitch sports are subject to the Playing Pitch Strategy (PPS) methodology, whereas other outdoor sports (e.g. tennis) are assessed using the Assessing Needs and Opportunities Guidance (ANOG). There are 4 stages to the ANOG assessment:
- **Stage A – Prepare and tailor the approach**
    - Establish a clear understanding of the purpose, scope and scale of the assessment. This will be undertaken in line with Stage A of the PPS methodology.

---

## Redditch Borough Council

### *Playing Pitch Strategy – Stage C Assessment*

---

- **Stage B – Gather information on supply and demand**
  - To build a clear picture of the supply of outdoor facilities, information will be gathered on the quality, quantity, accessibility and availability of individual sites.
  - Demand data such as local population, club affiliation, educational demand, unmet/latent demand, future growth and sport specific priorities will be gathered.
  - Supply and demand data will be gathered alongside Stage B of the PPS methodology, using consultation, club surveys, site assessments etc.
- **Stage C – Assessment – bringing the information together**
  - Development of the key findings regarding quality, quantity, accessibility and availability of outdoor sports provision in the area. Implications of each site will be developed on the principle of protect, enhance and provide.
- **Application – Application of the assessment**
  - All key findings and priorities from Stage A – C will be applied and used to inform sports strategy, planning policy, infrastructure planning and funding applications.

1.15. The findings in this report are based on data collected from several credible sources, including but not limited to;

- Local authority and public policy strategic documentation;
- Sport England tools, including the Facility Planning Model (FPM), Active Places Power, the Active People Survey, Market Segmentation and the Sports Facility Calculator;
- Stakeholder consultation, including Bromsgrove and Redditch Council Officers and Members, Sport England, relevant National Governing Bodies of Sport, education providers, key user clubs; and
- Site visits, undertaken at all strategically important sites across the Study Area.

1.16. A project steering group comprising representation from the Council, Sport England and National Governing Bodies of Sport (NGBs) has guided the study from its commencement. At critical milestones, the Steering Group members have reviewed and verified the data and information collected to allow the work to proceed efficiently through each stage.

### Report structure

1.17. The structure of the PPOSS report is as follows:

- Section 1 – Introduction and Methodology
- Section 2 – Strategic Context
- Section 3 – Artificial Grass Pitches
- Section 4 – Football
- Section 5 – Hockey
- Section 6 – Rugby Union
- Section 7 – Cricket
- Section 8 – Tennis
- Section 9 – Netball
- Section 10 – Bowls

1.18. Supporting information is included in the appendices and referenced throughout.

1.19. In addition to this needs assessment, a strategy document has also been produced, which provides future recommendations, scenario testing and a site-by-site action plan for key sites across the local authority.

## 2. Strategic Context

### The Study Area

#### Redditch Borough

- 2.1. The Redditch Borough Council local authority area is to be considered as a whole for the purpose of the PPOSS and will not be broken down into further sub-areas. These are highlighted in the table below:

#### Redditch Borough Council Local Authority Area

- 2.2. Redditch Borough is within the County of Worcestershire and borders Warwickshire County to the east and southeast. It is surrounded by Bromsgrove District to the west and north, Stratford-upon-Avon District to the east and southeast and Wychavon District to the southwest.
- 2.3. The Borough is situated at the outer edge of the Green Belt boundary for the West Midlands. Redditch offers easy access to the countryside and prominent local areas, including culturally rich areas such as Stratford-upon-Avon and naturally rich areas such as the Cotswolds. The Borough lies 15 miles south of the Birmingham conurbation and Birmingham airport is approximately 25 minutes' drive time away
- 2.4. Redditch Borough consists of the main town of Redditch, the villages of Astwood Bank and Feckenham and several other hamlets. It covers an area of 5,435 hectares (13,430 acres) with a population of 84,214 (2011 census).
- 2.5. The Borough is split into the urban area of Redditch in the north, accounting for 50% of the area and 93% of the population; and the rural area to the south with 7% of the population. The rural area consists predominantly of Green Belt land, but also open countryside, as well as the villages of Astwood Bank and Feckenham.
- 2.6. Redditch was formerly a market town until 1964 when it was designated as a New Town; a status it maintained up until 1985. During this period, the Redditch Development Corporation was responsible for the growth of Redditch, predominantly to the east of the town.

#### Planning Policy

- 2.7. There are a number of key national and local strategies and policies that inform and influence the development of these strategies. These policies inform the approach to current and future provision of sports facilities, linked to health improvement, increased participation, and the appropriate levels of provision of facilities to meet local needs.

---

## Redditch Borough Council

### *Playing Pitch Strategy – Stage C Assessment*

---

- 2.8. From a planning perspective, the national agenda makes the link between planning policy, a Local Plan and population growth at a local level, and the need to plan for increased demands for infrastructure and provision, linked to Protect, Enhance, and Provide; these are the key elements of the National Planning Policy Framework (NPPF). This will be explained further in the following sections.

#### Redditch Local Plan

- 2.9. The Borough of Redditch Local Plan is at its very early stages of its review, an end date is yet to be decided on. The current plan expires in 2030.
- 2.10. The PPOSS will be used to help inform future the location and scale of playing pitch provision and inform funding strategies. The future of CiL and Section 106 contributions are somewhat unknown due to the current reforms likely to be outlined in the planning bill. The PPOSS will provide the evidence required to inform whatever form of infrastructure delivery the Council will have to put in place.
- 2.11. The current local plan that was adopted in 2017, makes reference to open space provision in the Borough. Paragraph 12.2 in the adopted local plan highlights the need to maintain minimum standards of open space provision that is identified in needs assessments and playing pitch strategies. It also states that “new development will be required to make provision for new and/or improvements to open space, sports and recreation facilities...”. The adopted local plan also states that the Borough Council will, in principle, support the development of new open space, sport and recreation facilities. To support this commitment to maintaining adequate levels of provision, paragraph 13.3 states that “if development is permitted which results in the loss of a playing pitch or allotment site the Borough Council will require the provision of equivalent or improved facilities and/or financial contributions from developers.

#### Key Issues for Redditch Borough in relation to playing pitch provision

- 2.12. The key issues in relation to playing pitches in Redditch are:
- 2.13. There is a need to develop an up-to-date summary of the current landscape for outdoor pitch sports in Redditch highlighting:
- areas of participation growth where known,
  - any known pressures on capacity, quality, accessibility, maintenance etc.
  - acknowledgement of the significant life expectancy divides in Redditch.
  - acknowledgement of the cross-boundary issues in neighbouring local authority areas and its impact upon supply and demand for our residents

#### Overarching framework

- 2.14. The Bromsgrove and Redditch PPOSS will contain an overarching framework for the hierarchy of playing pitch provision across both local authority areas.

---

## Redditch Borough Council

### *Playing Pitch Strategy – Stage C Assessment*

---

- 2.15. The overarching framework will identify the strategic added value of the proposals by:
- addressing the cross-boundary issues across Bromsgrove and Redditch;
  - addressing the sub regional considerations across the neighbouring authorities of Wychavon, Wyre Forest, Stratford upon Avon, Birmingham, Dudley, Worcester and Solihull.
  - identifying a consistent approach to undertaking pitch assessment, to ensure that the baseline information available on the current supply and demand for different sports is comparable across the two local authorities;
  - providing sport and site-specific recommendations on opportunities for cross-boundary provision within and beyond the boundaries of the neighbouring boroughs;
  - making recommendations for addressing the needs of potential / future major growth areas in the local authorities

#### How far forward will the PPOSS look?

- 2.16. The PPOSS documents will align with the timescales of the local plans. The Bromsgrove Local Plan is intended to be 2023-2040, the Redditch Local Plan is in very early stages of its review, and the current end date runs until 2030. However, considering there is not yet an up-to-date Redditch document, both PPOSS documents should mirror each other covering the timescales of Bromsgrove Local Plan i.e., up to 2040.

#### Strategic Policy and Context

- 2.17. There are a number of key national and local strategies and policies which inform and influence the development of these strategies. These national policies inform the approach to current and future provision of sports facilities, linked to health improvement, increased participation, and the appropriate levels of provision of facilities to meet local needs. From a planning perspective, the national agenda makes the link between national planning policy, a Local Plan and population growth at local level, and the need to plan for increased demands for infrastructure and provision, linked to Protect, Enhance and Provide.

#### National Planning Policy Framework (NPPF)

- 2.18. The National Planning Policy Framework (NPPF) sets out the Government's planning policies for England. A revised version was published in 2021. The NPPF provides the framework that must be considered in the preparation of local plans and is a material consideration in determining planning decisions. The NPPF highlights the purpose of the planning system in terms of contributing to the achievement of “sustainable development”, and defines the three dimensions of this – economic, social and environmental – which are interdependent and need to be pursued in mutually supportive ways.
- 2.19. The Revised NPPF retains the broad policy approach of the previous version, albeit with a stronger emphasis upon housing delivery. The policy wording for sport and recreation is largely unchanged.

---

## Redditch Borough Council

### ***Playing Pitch Strategy – Stage C Assessment***

---

- 2.20. Paragraph 98 and 99 of the NPPF states that planning policies should be based on robust and up-to-date assessments of the need for open space, sport and recreation facilities and opportunities for new provision.
- 2.21. Paragraph 97 of the NPPF specifies that:
- Existing open space, sports and recreational buildings and land, including playing fields, should not be built on unless:
- 1. An assessment has been undertaken which has clearly shown the open space, buildings or land to be surplus to requirements; or**
  - 2. The loss resulting from the proposed development would be replaced by equivalent or better provision in terms of quantity and quality in a suitable location; or**
  - 3. The development is for alternative sports and recreational provision, the benefits of which clearly outweigh the loss of the current or former use.**
- 2.22. The revised NPPF has increased emphasis in relation to health and wellbeing. For example, the increased importance of planning policies and decisions to aim to achieve healthy, inclusive and safe places; planning positively for provision and use of community facilities (including sports venues); and taking into account local strategies to improve health, social and cultural wellbeing for all sections of the community (para 98 and 99).
- 2.23. Sport England is a statutory consultee on all planning applications affecting playing fields used in the last 5 years, and a consultee on other applications: it looks to improve the quality, access and management of sports facilities as well as investing in new facilities to meet unsatisfied demand. Sport England requires local authorities to have an up-to date assessment of sports facility needs and an associated strategy including a recommendation that the evidence base is regularly reviewed to keep it up to date and renewed at least every five years.
- 2.24. The key drivers for the production of the strategy as advocated by Sport England are to protect, enhance and provide sports facilities, as follows:
- 1. Protect**
    - To provide evidence to inform policy and specifically to support site allocations and development management policies which will protect sports facilities and their use by the community, irrespective of ownership;
  - 2. Provide**
    - To ensure that sports facilities are effectively managed and maintained and that the best uses are made of existing resources – whether facilities, expertise and/or personnel to improve and enhance the existing provision – particularly in the light of pressure on local authority budgets; and

---

## Redditch Borough Council

### *Playing Pitch Strategy – Stage C Assessment*

---

#### 3. Enhance

- To provide evidence to help secure external funding for new facilities and enhancements (if on the infrastructure list) and Section 106 agreements. Sport England and the local authority can then.

#### Sport England Definitions

##### 1. Protect:

- Existing provision should be protected unless an assessment has demonstrated there is an excess of the provision and the specific buildings or land are surplus to requirements, or equivalent or better provision will be provided as replacement;

##### 2. Enhance:

- The use of existing **provision** should be optimised, for example through quality, access and management improvements supported by appropriate ancillary facilities; and

##### 3. Provide:

- Appropriate new **provision** that meets needs and encourages people to play sport and be active should be provided by adapting existing places and through new development.

#### A New Strategy for Sport – Department for Culture, Media and Sport

2.25. The Department for Culture, Media and Sport, following a consultation paper in 2015, launched the new strategy 'Sporting Future: A new Strategy for an Active Nation' in 2016. The development of the new strategy reflects a need to re-invigorate the nation's appetite for participation in sport following what appears to be a significant reduction in participation (highest profile being swimming), following the upsurge after the 2012 London Olympics.

2.26. The sport strategy is targeting five outcomes which each sports organisation, public or private sector, will be measured against:

- Physical wellbeing
- Mental wellbeing
- Individual development
- Social and community development
- Economic development.

2.27. Government funding will go toward organisations which can best demonstrate that they will deliver some or all of the five outcomes.

---

## Redditch Borough Council

### ***Playing Pitch Strategy – Stage C Assessment***

---

2.28. The Delivery of the outcomes will be through three broad outputs;

- More people from very background regularly and meaningfully taking part in sport and physical activity, volunteering and experiencing live sport;
- A more productive, sustainable and responsible sports sector; and
- Maximising international and domestic sporting success and the impact of major sporting events.

#### **Sport England Strategy 2021- 2031 ‘Uniting the Movement’**

2.29. The Vision for this Strategy is:

**‘a nation of more equal, inclusive and connected communities. A country where people live happier, healthier and more fulfilled lives’.**

2.30. Being active is one of the most effective and sustainable ways to achieve this Vision. The evidence is overwhelming that moving our bodies – through community sport, fitness and physical activity – improves our lives, individually and collectively. Everyone across the nation can benefit from it.

2.31. Sport England won’t – and can’t – do it alone. Ours is a collective purpose: we’re part of a much bigger team. Together, we won’t stop until everyone has the opportunity, the inspiration and the freedom to get moving.

2.32. Sport England wants everyone in England to feel able to take part in sport or physical activity, regardless of age, background or ability; key priorities of the 10-year Sport England Strategy are:

- Advocating for movement, sport and physical activity
- Joining forces on five big issues
- Recover and Re-Invent
- An Active and Healthier Life
- Fairer Access to Physical Activity
- Strengthen Communities
- Active Environments
- Creating the Catalysts for Change

2.33. The Strategy’s vision will transform lives and communities through physical activity.

**When we choose where to spend time, energy and money, we’ll be guided by three principles built into the way we operate:**

1. Investing most in those that need it most
  - We’ll balance targeted and universal provision in a way that’s proportionate to the level of need.
  - We’ll draw on the experiences and knowledge of people in places and communities closest to the issues, alongside the influence, views and understanding of national partners.
  - We’ll make the things that underpin all our work simpler and easier for our colleagues and partners, so the basic information, guidance and support feels brilliantly simple to give and receive.
2. The right blend of national and local action
3. Simple as standard.

**When we choose where to spend time, energy and money, we’ll be guided by three principles built into the way we operate:**

1. Investing most in those that need it most
  - We’ll balance targeted and universal provision in a way that’s proportionate to the level of need.
  - We’ll draw on the experiences and knowledge of people in places and communities closest to the issues, alongside the influence, views and understanding of national partners.
  - We’ll make the things that underpin all our work simpler and easier for our colleagues and partners, so the basic information, guidance and support feels brilliantly simple to give and receive.
2. The right blend of national and local action
3. Simple as standard.

---

## Redditch Borough Council

### *Playing Pitch Strategy – Stage C Assessment*

---

#### Local Level

2.34. A number of current strategic policies, strategies and factors influence current and future supply and demand for sport and recreation facilities in the Redditch. As well as providing the context for future facility provision, e.g., health improvement, improving accessibility, increasing participation, these strategies provide opportunities to link priority areas and needs, and ensure that outcomes are aligned with identified local objectives. The relevant strategies and policies include:

- Redditch Borough Council Corporate Plan 2019 - 2024
- Borough of Redditch Local Plan No.4 Adopted 2017
- Redditch Open Space 2007
- Redditch Open Space Needs Assessment 2009
- Shaping Worcestershire – Our Plan for Worcestershire 2017 - 2002
- Redditch Public Open Space Standards Background Core Strategy 2009
- Borough of Redditch Local Plan No.4 Green Infrastructure Strategy 2014
- Worcestershire Green Infrastructure Strategy 2018
- Redditch Green Belt Release to Meet Growth Needs 2013
- Redditch Playing Pitch Strategy 2016
- Redditch Local Football Facilities Plan 2019
- Redditch Local Strategic Partnership
- Redditch Sport and Physical Activity Strategy 2022
- Worcestershire Joint Health and Wellbeing Strategy 2016 – 2021
- Worcestershire JSNA Reports
- Worcestershire Climate Change Strategy 2020

2.35. The above policies and strategies are summarised in Appendix 1

#### Population Profiles and Projections

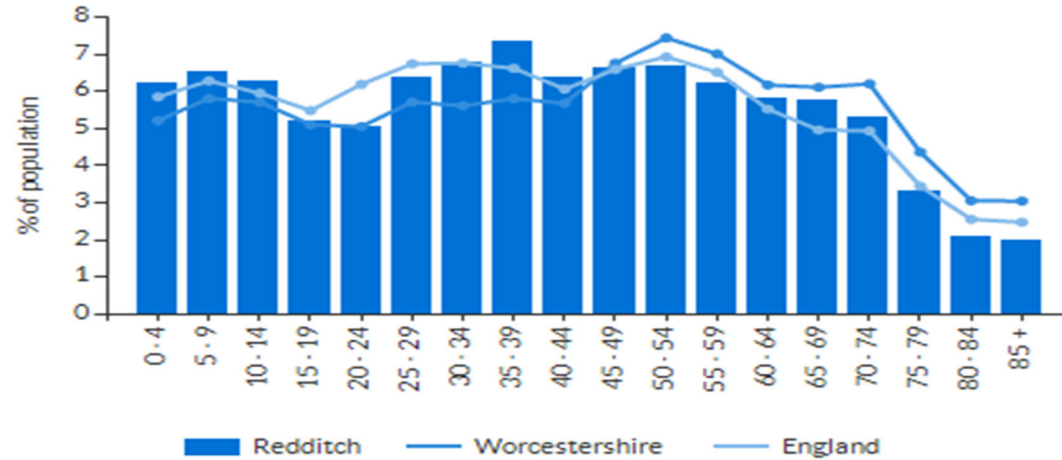
2.36. The current and future population profile of Redditch and the locations of growth are important to understand in relation to planning for the future provision of sport and physical activity.

2.37. The total population estimate from Redditch is 85,165 (ONS, 2021)

## Redditch Borough Council Playing Pitch Strategy – Stage C Assessment

2.38. Figure 1 shows the population estimates by 5-year age groups with regional and national comparisons.

Figure 1:



Date: 2019 Source: ONS

2.39. The ONS sub national projections (2021) indicate that the current population is likely to rise to 85,819 by 2040, an increase of just 654.

2.40. 49.7% of the current population are male, and 50.3% are female.

### Ethnicity

2.41. ONS, 2021 data states that 89.8% of people in Redditch identify as white, which is 8.9% higher than the national average. The 2<sup>nd</sup> largest ethnicity group is Asian, Asian British or Asian Welsh, of which 5.7% of people identify as.

2.42. 88.6% of the population of Redditch were born in the UK, significantly higher than the rest of England (82.6%).

### Deprivation

2.43. 46.9% of households in Redditch do not suffer any kind of deprivation according to ONS 2021 census. This is marginally lower than the national average 48.4%.

---

## Redditch Borough Council

### *Playing Pitch Strategy – Stage C Assessment*

---

- 2.44. Redditch's Index of Multiple Deprivation score is 22.524, which ranks as first when compared to the borough's 4 geographical neighbours and 105 of 317 authorities in England. (Rank 1 = most deprived)
- 2.45. In Redditch, 9% of Lower Layer Super Output Areas (LSOAs) are among the 10 per cent most deprived nationally.
- Redditch is ranked:
    - 1st out of Redditch's geographical neighbours (there are a total of 4) and 74 out of all 317 authorities in England for the Children and Young People sub-domain
    - 1st out of Redditch geographical neighbours and 241 out of all 317 authorities in England for the Adult Skills sub-domain
    - 3rd out of Redditch geographical neighbours and 87 out of all 317 authorities in England for the Geographical Barriers sub-domain
    - 1st out of Redditch geographical neighbours and 256 out of all 317 authorities in England for the Wider Barriers sub-domain
    - 4th out of Redditch geographical neighbours and 222 out of all 326 authorities in England for the Indoors sub-domain
    - 4th out of Redditch geographical neighbours and 218 out of all 317 authorities in England for the Outdoors sub-domain. (Rank 1 = most deprived, 317 = least deprived.)
    - Redditch is ranked 1st out of Redditch geographical neighbours (there are a total of 4) and 120 out of all 317 authorities in England for IDACI. The score, 9.5, represents the actual proportion of children living in families who were income deprived.
    - Redditch is ranked 1st out of Redditch geographical neighbours and 114 out of all 317 authorities in England for IDAOPI. Again, the score, 8.2, represents the actual proportion of the population aged 60 and over who were income deprived.

### Health

- 2.46. The health of people in Redditch is varied compared with the England average. About 15.6% (2,620) of children live in low-income families. Life expectancy for both men and women is similar to the national average.
- 2.47. Life expectancy is 12.7 years lower for men and 10.4 years lower for women in the most deprived areas of Redditch than in the least deprived areas.

---

Redditch Borough Council  
***Playing Pitch Strategy – Stage C Assessment***

---

- 2.48. In year 6, 17.7% (170) of children are classified as obese, better than the average for England. The rate for alcohol-specific hospital admissions among those under 18 is 18\*. This represents 3 admissions per year. Levels of breastfeeding are worse than the England average.

### 3. Artificial Grass Pitch (AGP) Analysis

#### Introduction

- 3.1. There are four surface types that fall into the category of Artificial Grass Pitches (AGP); rubber crumb (3G), sand-based (filled or dressed) and water based. This section focusses on the third generation (3G) facilities in Redditch that are suitable for football, rugby union and rugby league, as well as the one sand-based pitch in Redditch, which is currently used for football and rugby training.

#### 3G AGP Usage for Football

- 3.2. The FA and Football Foundation considers high quality 3G pitches as essential in promoting coach and player development across all age groups. These pitches can support intensive use and as such are valuable assets for both playing and training. Primarily, such facilities have been installed for community use and training however they are increasingly used for competition, which the FA wholly supports providing the pitch has been appropriately tested and is on the FA 3G pitch register. The FA's long-term ambition is to provide every affiliated team in England with the opportunity to train once a week on a floodlit 3G surface together with priority access for England Football Accredited community clubs through a partnership agreement.
- 3.3. The FA has adopted the use of 3G pitches across all competitions other than the Premier League and Football League. This decision was taken due to the significant advances that have been made to the development of 3G Football Turf (FTP) and the adoption of these surfaces by professional leagues throughout Europe and by both UEFA and FIFA for major competitions.
- 3.4. Competitive affiliated football can only take place on 3G surfaces that have been tested to FA standards and are on the FA 3G Pitch Register. Some football training takes place on sand-based surfaces; however, this is mainly due to lack of access to more appropriate facilities, and it not a comparable alternative. Therefore, a 3G surface is the preferred surface for football by both the consumer and the FA.

#### 3G AGP Usage for Rugby

- 3.5. The use of 3G AGP provision for rugby match play and training has increased significantly in the past 10 years, due to a combination of improved technology, greater investment and changing player behaviour.
- 3.6. Clubs and operators are increasingly seeing the benefit of utilising 3G provision, due to the durability of the surface and the ability of clubs to play back-to-back matches, as well as using the same surfaces for both match play and training.

---

## Redditch Borough Council

### *Playing Pitch Strategy – Stage C Assessment*

---

- 3.7. For facilities to be used for contact training or affiliated rugby union match play, pitches must be World Rugby 22 (WR22) compliant, which ensures pitches have an adequate shock pad and length of synthetic grass to ensure they are safe to play on. Pitches that are WR22 are commonly also compliant for Rugby League as the surface satisfied the requirements of the RFL Performance and Construction Standards for Synthetic Turf Competition and Training Pitches. However, surfaces that are compliant with rugby league standards, do not always meet the requirements for rugby union.

#### Supply

- 3.8. Table 1 overleaf provides a list of all sand-based, water based and 3G AGPs in Redditch, identified as part of the audit. For each of the AGPs across the Study Area, the supply and demand has been summarised, with identification of spare capacity in the peak period where relevant.
- 3.9. Detailed audit data for each facility, as well as whether they are included on the FA register, are included in the Stage B document of this PPOSS.
- 3.10. The study area currently has three full sized 3G AGPs available for community use which are used heavily through periods of peak demand (weekday evenings 5pm-9pm and weekends). All of these pitches have secured community use agreements.
- 3.11. Arrow Vale Sports Centre, Trico Stadium and Woodfields Academy are all full size 3G pitches. Arrow Vale Sports Centre and Woodfield Academy are both education sites, providing curricular and extra-curricular use during the day. The Trico Stadium is the home of Redditch United, and as well as catering for high level first team football, also provides access to many of its other younger age groups, females and pan disability teams.
- 3.12. The weekday peak times are 5-9pm and at weekends and 10am-6pm. All facilities have sports lighting and can therefore be used by the community at peak times throughout the winter. Table 2 details the number of peak time hours available at each site.
- 3.13. There is no small sided AGP provision in Redditch.
- 3.14. There is one, full sized sand dressed AGP and one full size water based AGP in the study area. The sand dressed surface at Trinity High School is in a very poor state and often suffers from flood damage, whilst the water-based pitch at Redditch Cricket, Hockey and Rugby Club is of a good standard.
- 3.15. Work carried out as part of the updated Football Foundation's Local Football Facility Plan (LFFP) in 2019, established a 10-year vision for football facilities that aims to transform the playing pitch stock and 'built' facilities in a sustainable way. It will build on existing local evidence and strategic planning work. For example, an LFFP will complement and take forward relevant actions from a Local Authority's 'Playing Pitch Strategy' (PPOSS) rather than acting as a substitute for having a PPOSS in place. By doing so, an LFFP will identify the FA and FF's priority projects to deliver and will act as an investment portfolio for schemes that require funding. As such, we estimate that **90%** of all national football investment (FA, Premier League, Sport England and DCMS via the Football Foundation) in your Authority will be identified via your LFFP.

## Redditch Borough Council

### *Playing Pitch Strategy – Stage C Assessment*

- 3.16. The LFFP is not a strategic document and does not take into consideration other sporting and community needs outside of football. This Playing Pitch Strategy supersedes the LFFP should help to inform its recommendations and priority projects. Therefore, the LFFP should be updated following the completion of the PPOSS.
- 3.17. The 2019 LFFP highlighted one priority project regarding 3G AGPs, which was the development of a full size 3G facility in the Redditch/Matchborough area, due to the high levels of demand in the area. This has since been delivered at Arrow Vale Sports Centre, through the conversion of the previous sand dressed AGP.
- 3.18. The LFFP also highlighted Terry’s Playing Field, Greenlands Playing Field and Redditch Borough Community Sports and Social Club for sites that required grass pitch improvements. Further analysis of this will be considered in the football section of this report.
- 3.19. The 3G AGP at Woodfield Academy is not currently listed on the FA 3G Pitch Register. However, there is a commitment from the school to relay the pitch and meet the criteria to be listed again on the register. This would theoretically allow the pitch to host competitive fixtures again, however it is apparent that fixtures are still being held on site currently.
- 3.20. An audit of AGPs in Redditch is provided below, and locations of each site are shown in Map 2.

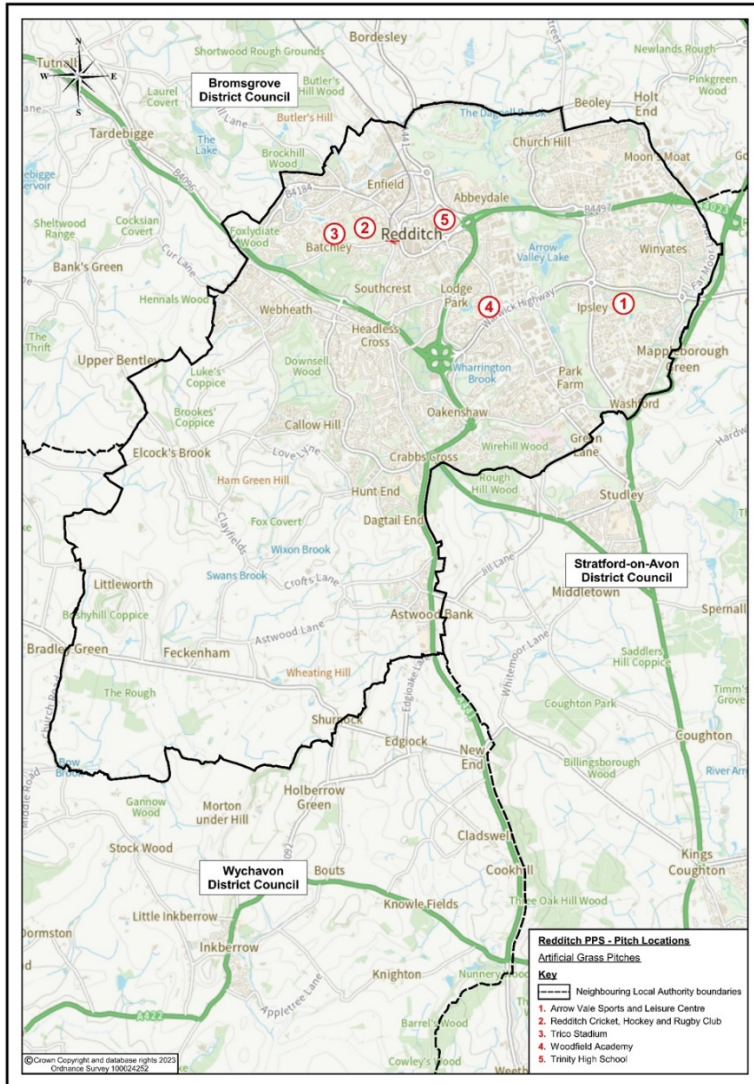
**Table 1: AGP Audit**

Site Name	Postcode	Availability	Security of Use	Surface Type	FA 3G Pitch Register	WR22	Size	Pitch Dimensions (m)	Age of Surface	Floodlit	Pitch Rating
Arrow Vale Sports and Leisure Centre	B98 0EN	Available	Secured	3G	Yes	No	Full	100x60	2020	Yes	Good
Redditch Cricket, Hockey and Rugby Club	B97 4SP	Available	Secured	Sand Dressed	No	No	Full	100x60	2017	Yes	Good
Trico Stadium	B97 4RN	Available	Secured	3G	Yes	No	Full	105x69	2016	Yes	Good
Woodfield Academy	B98 7HH	Available	Secured	3G	Expired	No	Full	100x60	2018	Yes	Standard
Trinity High School	B98 8HB	Available	Secured	Sand Dressed	No	No	Full	100x62	1999	Yes	Poor

# Redditch Borough Council

## Playing Pitch Strategy – Stage C Assessment

Map 2: AGPs in Redditch



### Imported/Exported Demand

- 3.21. While a PPOSS is typically delivered for a single local authority area and considers all supply and demand from that given Study Area, it is understood that residents are typically not restricted by local authority boundaries when undertaking sport and physical activity. For instance, clubs and participants may travel outside of the local authority to access facilities that are of higher quality or more affordable, or where they are no longer able to access to facilities within the local authority.
- 3.22. Through consultation, it is apparent that AGPs in Redditch are helping to meet training demand of football clubs from outside of the area. As highlighted in table 2, both Woodfield Academy and Arrow Vale Leisure Centre are supporting use from Inkberrow FC, and Studley Lions are using Redditch Cricket, Hockey and Rugby Club to meet some of their training demand. However, during the development of this PPOSS, Studley Sports Centre have built a full size 3G pitch, meaning that this imported demand may no longer be present. West Bromwich Albion FC also have use of Woodfield Academy on Tuesdays and Saturdays during peak times.
- 3.23. There is also some exported demand from Redditch United, as some teams are forced to travel to South Bromsgrove High to access 3G provision at peak times for training. Studley Sports Centre 3G, just outside of the Redditch Borough Council boundary also supports football demand of 8 junior teams from FDC Academy. Although the club are Redditch based, all of their demand is met outside of the borough.
- 3.24. The development of further 3G provision in Redditch will be explored as part of stage D of the PPOSS, which may help to eliminate the need for this exported demand.

### Current Supply and Demand

#### Combined Supply and Demand Analysis for Football and Hockey.

- 3.25. The commentary in the previous section has explained the theoretical supply of AGPs in the study area. To understand how this supply caters for the study area, it is necessary to analyse the current demand for AGP pitch use.
- 3.26. To provide a more accurate picture of how AGP provision is currently being utilised, Table 2 shows the supply and demand analysis for all provision that is available to the community. This compares the amount of available capacity (in hours) during the peak period with the amount of demand that has been provided by clubs and users during consultation.
- 3.27. Table 2 indicates that the 3G AGP pitches in Redditch have no peak time capacity.
- 3.28. Arrow Vale Sports Centre, Woodfield Academy and Trico Stadium are used to capacity midweek for training, match play and some informal use.

## Redditch Borough Council

### *Playing Pitch Strategy – Stage C Assessment*

- 3.29. Arrow Vale and Woodfield Academy are educational sites and cater for curricular use throughout the day, Monday to Friday.
- 3.30. Trinity High School has spare capacity; however, the pitch is of very poor quality and has signs of flood damage.
- 3.31. It is key to note that only demand that has been identified by clubs and sites during the PPOSS consultation has been included. Table 2 below shows that there is currently 108 hours of demand from affiliated teams and clubs in Redditch. It must be noted that further demand will be generated by informal football or corporate leagues, among others, therefore it is important that this supply and demand assessment is cross-checked with the supply and demand analysis presented below.

**Table 2: Supply and Demand Analysis for all available 3G AGP Provision**

Site Name	Pitch Type	Size	Peak Time Capacity	Clubs using the site			Total hours			
				Football	Hockey	Other	Mid-week	Saturday	Sunday	Total
Arrow Vale Sports and Leisure Centre	3G	Full	36	Redditch Borough FC, VLK United, Studley Juniors, Inkberrow Eagles, South Redditch Eagles, Arrow Valley FC			20	8	8	36
Trico Stadium	3G	Full	36	Redditch United, Headless Cross Juniors			20	8	8	36
Woodfield Academy	3G	Full	36	Kingfisher FC, South Redditch Eagles, Inkberrow Football Club, Hope 4 Hearts FC, Alvechurch FC, West Bromwich Albion			20	8	8	36
<b>Total</b>							<b>60</b>	<b>24</b>	<b>24</b>	<b>108</b>

**Table 3: Supply and Demand Analysis for all available Sand/Water Based AGP Provision**

Site Name	Pitch Type	Size	Peak Time Capacity	Clubs using the site			Total hours			
				Football	Hockey	Other	Mid-week	Saturday	Sunday	Total
Redditch Cricket, Hockey and Rugby Club	Water Based	Full	36	Studley Lions, Casual play, Walking football	Redditch Hockey Club	Rugby, Cricket	20	4	4	28

## Redditch Borough Council

### *Playing Pitch Strategy – Stage C Assessment*

Site Name	Pitch Type	Size	Peak Time Capacity	Clubs using the site			Total hours			
				Football	Hockey	Other	Mid-week	Saturday	Sunday	Total
Trinity High School	Sand Dressed	Full	36				0	0	0	0
<b>Total</b>							<b>20</b>	<b>4</b>	<b>4</b>	<b>28</b>

### Informal Demand

- 3.32. In addition to the ‘formal’ demand captured during the club consultations, it is also important to consider the amount of ‘informal’ demand for 3G AGP facilities produced within the Redditch. ‘Informal’ demand in this sense refers to demand produced by clubs, teams or users of AGP facilities that are not affiliated to an NGB (such as groups of friends having a game of 5v5 organised within their group).
- 3.33. The over 16- 70 population of Redditch is 57,685. In the area covered by Herefordshire and Worcestershire Active Partnership (HWAP), which is the smallest available area for which there is available data, 1.9% of people aged 16 or over participated in small-sided football at least twice in the last 28 days (May 2019-2020).
- 3.34. If this ratio is applied to the population of Redditch, then it can be said that 1,096 people play small-sided football every fortnight (on average). On a given single week therefore, is, on average, demand from 548 people play small-sided football.
- 3.35. Small-sided football is typically played in a 5v5 or 6v6 format meaning a minimum of 10 people are required for any one match (although 7v7 is also a common format). Accounting for substitutes and a portion of small-sided demand being played in 7v7, it can be stated as an assumption that a total of 14 people on average participate in one game of small-sided football.
- 3.36. When the above assumption is applied to the number of people estimated to participate in small-sided football matches per week, it can be said that there is demand for 39 informal small-sided matches per week (633 divided by 14).
- 3.37. It is assumed that each small-sided football match lasts for one hour (allowing time for change over). Given there are considered to be 4 hours of peak-time capacity per day in the mid-week period, plus a further 8 hours on each day of the weekends, it can be said that one small-sided pitch can accommodate 36 matches per week in the peak period.

## Redditch Borough Council

### *Playing Pitch Strategy – Stage C Assessment*

- 3.38. Given the 108 hours of ‘formal’ demand captured by the club consultations, it can be said there is demand for approximately 147 hours of 3G AGP demand in Redditch when all formal and informal demand has been considered. However, although it is important to consider the impact of informal demand, it will not be taken into consideration in the calculations below, as the FA and FF’s 1:38 model already takes into account some recreational demand.

#### Current Supply and Demand Modelling – Full Size 3G AGP Provision (Football)

- 3.39. As part of the FA National Game Strategy, the Football Association identified a strategic objective to ensure that all teams playing competitive football have access to a floodlit 3G AGP to train on at least once a week. To do this, FA calculations show that a full size 3G AGP (available for community use at peak times) is required for every 38 teams, which will allow the required training and match play slots, as well as providing suitable supply at peak times (weekday evenings and weekends).
- 3.40. Using the demand data for Redditch, 116 teams have been identified as playing within Redditch. Using the FA’s suggested ratio of 1:38, this demonstrates the need for **3 full sized 3G AGP’s**. Table 4 below highlights the concentration of teams in Redditch and the required number of 3Gs.

**Table 4: Current Capacity Analysis for AGPs**

Sub Area	Teams	Total number of full size 3G AGPs required to meet demand	Current number of full size equivalent 3G AGPs	Current balance
Redditch	116	3	3	0

- 3.41. Supply and demand data for the project identifies three existing full sized 3G AGP facilities within the Study Area that are available for community use. Therefore, training demand for affiliated football clubs in Redditch is currently being met.
- 3.42. It should be noted that this theoretical analysis only includes full sized 3G AGP’s, in line with the strategic objectives of the FA and Football Foundation and because there is no small-sided 3G provision in the study area.
- 3.43. However, through consultation it is apparent that all 3G provision in Redditch is at maximum capacity, and further training and match play slots are unavailable for clubs. A number of clubs, such as Redditch United are forced to access 3G provision in Bromsgrove, putting strain on the already significant deficit of 3G provision in the area. Although theoretically there is enough 3G provision to cater for all teams in Redditch, in reality many teams are unable to access 3G provision.

**AGP Future Supply and Demand Balance**

- 3.44. To understand the projected level of demand for 3G AGPs in Redditch across the lifetime of the project, the same ratio of 1:38 has been used, to consider the additional 23 football teams identified in the TGR and latent demand calculations, by 2040.
- 3.45. As 3G pitch facilities are already currently working at capacity, the addition of 23 new teams by 2040 is likely to put further pressure on clubs who are struggling to find appropriate training facilities within Redditch.
- 3.46. Although based on the Football Foundation’s 1:38 model, the additional 23 new teams may not constitute the need for further 3G AGP provision, the case for a smaller facility to support training demand could be made. This will be explored further at Stage D. There should also be a focus on maintaining the current provision to a high standard and ensure that all 3G pitches are approved on the FA 3G Pitch Register. Currently only Arrow Vale Sports and Leisure Centre and Trico Stadium are registered, with Woodfield Academy having expired. Inclusion on the FA 3G Pitch Register would allow more formal match play demand to be satisfied by AGP pitches. However, through consultation it is apparent that Woodfield Academy is supporting both training and match play demand regardless of inclusion on the FA 3G Pitch Register.
- 3.47. Table 5 below breaks down this future demand, which will feed into the site-specific recommendations and actions.

**Table 5: Future Capacity Analysis for AGPs**

Sub Area	New teams (as identified in TGR and latent demand)	Total number of new AGPs required to meet future demand
Redditch	23	0.6

- 3.48. Whilst the above section considers how to meet the training demand for clubs in the study area, 3G pitches can also be used for match play, dependent on league regulations. The development of additional AGP provision may help to minimise the existing and future deficit for match play demand in Redditch. This will be explored further in at Stage D and the overall action plan.
- 3.49. While the above analysis provides a quantified assessment of supply and demand, it is important to consider accessibility and spatial constraints when making recommendations regarding new or increased access to AGP provision. Map 3 overleaf shows the catchment area analysis for 3G AGPs in Redditch, which can be used to assess the accessibility of full-size 3G AGP facilities across the Study Area.

### AGP Future Demand – Rugby Union and Hockey

- 3.50. A hockey supply and demand analysis is included in the 'Hockey' section of this PPOSS.
- 3.51. There are no WR22 3G facilities within the study area, therefore there is no Rugby Union use of the facilities. However, as stated in the Rugby Union section of this report, there is a current, small deficit of grass rugby provision across Redditch, particularly for training.

### Meeting the Current and Future Demand for 3G AGP Facilities Across Redditch

- 3.52. There is no current shortfall of 3G AGP provision in Redditch according to the Football Foundation's 1:38 model. However, as 3G provision is at capacity during peak times, and due to some imported demand, many teams cannot access pitches at peak times.
- 3.53. Because 3G pitches in Redditch are currently at capacity; catering for some imported demand; teams being unable to access provision; and a small level of future growth, the case for a 4<sup>th</sup> 3G AGP in Redditch could be made. The impact, need and location for this will be explored as part of Stage D. The development of additional 3G provision would provide some capacity for growth and allow all teams within Redditch access to 3G pitches for training purposes.
- 3.54. A key objective for the FA is to maximise the use of 3G pitches for competitive football match play. This will increase the quality of provision, reduce the number of cancellations and help to address future demand. Affordable pricing policy that includes match-based charges in line with grass pitches should be a consideration.
- 3.55. From the current and future supply and demand analysis we can conclude the following:
- There is a currently adequate 3G provision to meet demand in Redditch.
  - By 2040 there will be an additional need for a further 0.6 new full size 3G AGP pitches due to population demand and team growth (football only).
  - In total, there will be a future demand for 3.6 full size 3G FTPs by 2040. There are already 3 full size FTPs in the study area.
- 3.56. It is important to state that any future development would require a robust programme of use to ensure its sustainability and not remove demand from other 3G pitches in the area. The deliverability of any AGP should be subject to a significant feasibility study to determine the financial viability of a site and its impact on the local community. When selecting the sites that are appropriate for 3G AGP development, sites should have the following characteristics:
- Be available for significant use by local community clubs
  - Have good access and ancillary facilities to service the pitch(es)
  - Be financially sustainable

# Redditch Borough Council

## *Playing Pitch Strategy – Stage C Assessment*

- Be able to be maximised for training and match play provision during peak time
- Be well positioned to deliver wider football or rugby development programmes, including coach education and a recreational offer, using spare off-peak capacity to deliver this
- Be able to explore shared projects across multiple sports, possibly education use with a focus on the community, in order to ensure facilities are used throughout the peak and off-peak periods.

### AGP summary

- 3.57. This section summarises the findings from the AGP analysis, which will form the basis of the recommendations and action plan section for Redditch.
- 3.58. Table 6 includes the response to 5 key questions which are identified in the Sport England PPOSS Guidance Checklists. Using these key questions to summarise the findings of each of the sport chapter creates consistency, not only within the report but with similar PPOSS projects in neighbouring local authorities and further afield.

**Table 6: Key PPOSS Findings for AGPs in Redditch**

Key Question	Analysis
<b>What are the main characteristics of the current supply and demand for provision?</b>	<p>There is a total of 5 AGP's, with 4 (80%) of facilities rated as good and 1 (20%) as poor. This supply is comprised of 3 3G pitches, 1 water based AGP and 1 sand dressed AGP, all of which are full sized and floodlit.</p> <p>There are no WR22 compliant pitches in the study area.</p> <p>There is a current demand for 108 hours of 3G use from affiliated football clubs in the study area. In addition, there are 28 hours of demand from football clubs being met on sand dressed AGPs in Redditch.</p>
<b>Is there enough accessible and secured community use provision to meet current demand?</b>	<p>The current supply and demand analysis for 3G AGP football pitch provision, shows a that there is currently adequate provision to meet demand from football and hockey teams. <b>However, the 3G pitches are working at capacity and access to 3G provision is often challenging for clubs in Redditch.</b></p> <p>There is also a current and predicted future under supply of rugby union pitches for training in Redditch. Although there is not enough demand to warrant the development of a WR22 3G pitch, any development of 3G provision should consider being rugby compliant to help meet the needs of rugby clubs in Redditch.</p> <p>There is currently adequate provision to support hockey demand in Redditch. The water based AGP at Redditch Cricket, Hockey and Rugby Club caters for Redditch Hockey Club and there is no formal, peak time use of Trinity High School.</p>
<b>Is the provision that is accessible of sufficient quality and appropriately maintained?</b>	<p>80% of AGPs in Redditch are good and 20% poor. All 3G AGPs are rated as good quality. Only the sand dressed facility at Trinity High School is poor quality.</p>

---

## Redditch Borough Council

### *Playing Pitch Strategy – Stage C Assessment*

---

<b>Key Question</b>	<b>Analysis</b>
<b>What are the main characteristics of the future supply and demand for provision?</b>	<p>There is predicted to be 23 additional football teams in Redditch by 2040 due to latent demand. This creates a need for a further 0.6 full size AGPs.</p> <p>There are however aspirations by Redditch Borough, Trinity High and Tudor Grange Academy to develop 3G FTPs. Any developments at Redditch Borough and Tudor Grange Academy would result in the loss of good quality grass pitches. The development of a 3G pitch at Trinity High would require the resurfacing of a sand dressed AGP.</p>
<b>Is there enough accessible community use provision to meet future demand?</b>	<p>When considering population growth and latent demand, there will be a future additional need of 0.6 full size 3G AGPs. Again, this figure only takes into consideration football demand, and when noting the deficit of rugby union pitches in Redditch, the future under supply of 3G AGP pitches may be higher.</p> <p>The development of a 4<sup>th</sup> 3G AGP in Redditch may help to secure access to 3G pitches and cater for future growth of football in the area. This will be further explored at Stage D of the PPOSS.</p>

## 4. Football Analysis

### Introduction

- 4.1. This section of the report focusses on the supply and demand for grass football pitches. There is a separate standalone section that covers all Artificial Grass Pitches (AGP) including the 3rd Generation (3G) pitches, that are becoming increasingly important to service the needs of football for both competitive play and training.
- 4.2. This section includes the headline findings from the PPOSS, as well as a site-by-site analysis of football sites across Redditch.

### Strategic Priorities for Football

- 4.3. Football in the study area is governed by both Worcestershire FA and Birmingham FA. Both associations work to administer the provision of football in Redditch and support the strategic priorities highlighted below.
- 4.4. The FA Time for Change Strategy 2020-2024 is based on the exciting objective of inspiring a lifelong journey in football for all.
- 4.5. Its vision is to 'Unite the game, inspire the nation' and its mission is to change the game to maximise its impact and serve the game to deliver football for all.
- 4.6. The Time for Change Strategy focusses on six game changer objectives:
- Win a major tournament
  - Serve 2m+ through a transformed digital platform
  - Ensure equal opportunities for every girl
  - Delivery of 5000 quality pitches
  - A game free from discrimination
  - Maximise the appeal and revenue of the FA cups and Barclays FA Women's Super League.
- 4.7. There are also 8 serve objectives:
- Trusted, progressive, regulation and administration
  - Safe and inclusive football pathways and environment
  - Personalised & connected learning experiences

---

## Redditch Borough Council

### *Playing Pitch Strategy – Stage C Assessment*

---

- Maximum investment into the game
  - Diverse, high-performing workforce & inclusive culture
  - World class venues and events
  - Strong reputation and clear brand identity
  - Technology enabled and insight driven
- 4.8. A key piece of context for the strategy is the changing profile of formal football participation across the country. Between the 17/18- 20/21 seasons, the number of women and girls playing has doubled, more youth teams were created, more facilities built, driving record investment back into football.
- 4.9. The strategic pillar that is of greatest relevance to this PPOSS is 5. Develop Sustainable Football Facilities. This key focus for this pillar is facilities and investment, with key objectives summarised below:
- 3G Football Turf Pitches
  - Changing rooms, pavilions, and clubhouses
  - Improved grass pitches
  - Better indoor and outdoor spaces
  - Ensure that all projects are aligned and deliver against FA National Football Facilities Strategy targets:
  - Quality
  - Sustainability
  - Inclusivity
  - Engagement
  - Participation
- 4.10. Another key element of the Change Strategy is the focus on informal and recreational football, the overall goal being to improve the experience of the participant, leading to enhanced retention and new participation in the game.
- 4.11. Local Football Facility Plans (LFFP) are locally tailored reports that highlight the facility need across individual local authority areas. Informed and led by a PPOSS, the plans help to set out a roadmap for development of grass and artificial grass football facilities in specific areas. LFFPs work to set out a long term vision for local football facilities, identify priority projects, and can act as an investment portfolio for projects that require funding. Each LFFP also looks at ancillary facilities and small-sided, informal provision.

**Football Stage C Assessment**

**Supply**

- 4.12. The audit identifies a total of 53 grass football pitches across 18 sites in Redditch. 37 were available for community use, across 8 sites. All other pitches are based on education sites and are classed as unavailable.
- 4.13. Table 7 highlights the breakdown of pitches in Redditch based on availability and type.

**Table 7: Summary of Grass Football Pitches in Redditch.**

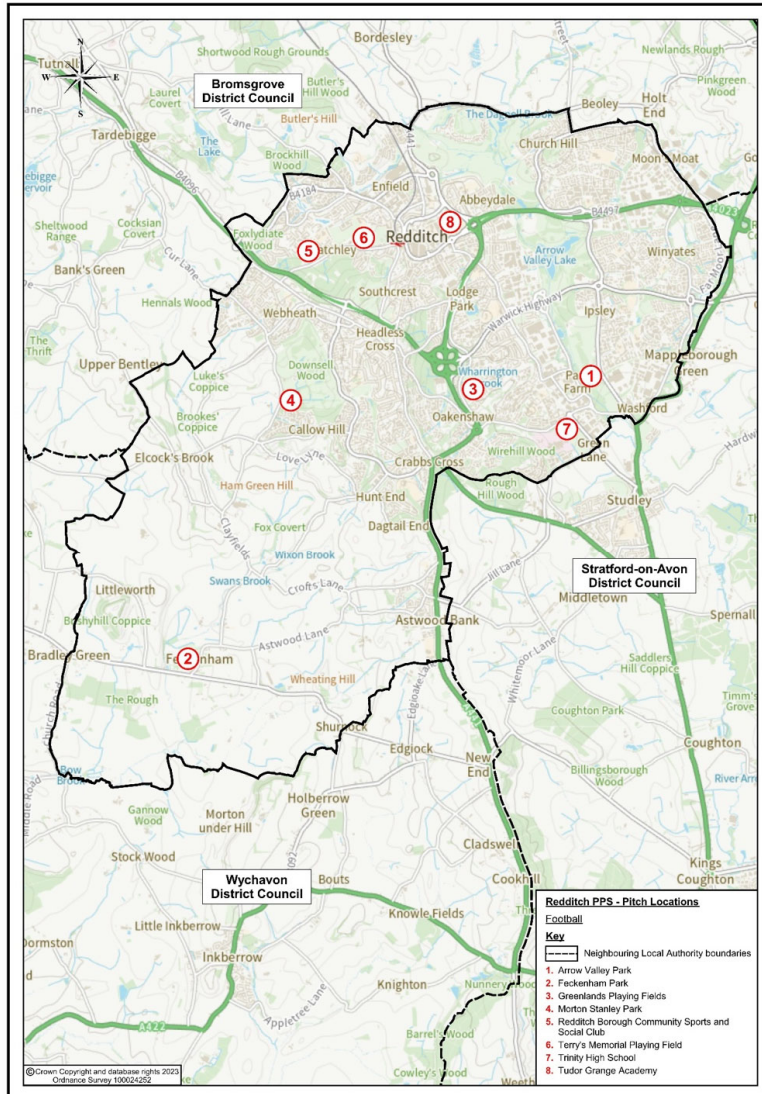
Analysis area	No. unavailable pitch sites	No. available Playing Pitch Sites	Pitches Available for Community Use					Total Available Pitches
			Adult	Youth 11v11	Youth 9v9	Mini 7v7	Mini 5v5	
Redditch	10	8	19	1	5	6	6	37

- 4.14. The number of available pitches in Redditch equates to 19 adult 11v11, 1 youth 11v11, 5 youth 9v9, 6 mini 7v7 and 6 mini 5v5 pitches (37).

# Redditch Borough Council

## Playing Pitch Strategy – Stage C Assessment

Map 3: All Pitches across Redditch



# Redditch Borough Council

## Playing Pitch Strategy – Stage C Assessment

### Secured and Unsecured Community Use Pitches used in the 2021/22 Season

- 4.15. Of the 37 available grass football pitches in Redditch, 36 were used during the 2021/2022 season.
- 4.16. 36 of the 37 (97%) available pitches across Redditch provide secure community use access (i.e., pitches owned or leased by local authorities or clubs/associations). The single pitch at Trinity High School, although available, is unsecure for community use.

**Table 8: Secured and Unsecured Community Use Pitches 2020/21 Football season**

Sub-Area	Secured/ Unsecured Community Use	No. marked pitches 2020/21 Used for community Use					Total (%)
		Full size	Youth (11 v 11)	Junior (9 v 9)	Mini (7 v 7)	Mini (5 v 5)	
Redditch	Secured Community Use	18	1	5	6	6	97%
	Unsecured Community Use	1	0	0	0	0	3%

### Education Supply

- 4.17. Football facilities are provided at educational establishments across the study area, with different levels of community use and security of that use. Where a site has been identified as being available for community use, pitches allocated to the relevant site are included within the total supply and demand analysis.
- 4.18. The following education establishments have been identified as being unavailable for community use and are therefore not included in the supply and demand analysis. Further detail is provided in the **Appendix XX**, as well as the site-by-site analysis.

**Table 9: Education Facilities Unavailable for Community Use**

Site Name	Sub Area	Pitch(es)
Astwood Bank	Redditch	1x youth 11v11
Birchensale Middle School	Redditch	2x adult 11v11
Ipsley CE RSA Academy	Redditch	1 youth 11v11
Pitcheroak School	Redditch	1 youth 11v11

## Redditch Borough Council

### *Playing Pitch Strategy – Stage C Assessment*

Site Name	Sub Area	Pitch(es)
Redditch Dingleside Middle School	Redditch	1x adult 11v11, 3x youth 11v11
Ridgeway Academy	Redditch	1x adult 11v11, 1x youth 11v11
St Augustines School	Redditch	1x adult 11v11
St Bedes Middle School	Redditch	1 youth 11v11
Walkwood CE Middle School	Redditch	1x adult 11v11, 1x youth 11v11
Webheath Primary Academy	Redditch	1 youth 11v11

### Disused Provision

- 4.19. Playing fields which have previously accommodated formal pitch provision are categorised as disused. A disused site is a playing field not being used at all by any users and is not available for community hire either. Once these sites are disused for five or more years they then fall outside of Sport England’s statutory remit.
- 4.20. Although disused pitches that fall outside of Sport England’s statutory remit, they must still be assessed using the criteria in paragraph 99 of the National Planning Policy Framework and Sport England may challenge a proposed loss of playing pitches/playing field which fails to meet such criteria.

**Table 10: Disused Pitches Redditch**

Pitch Name	Sub-Area	Pitch Size	Ownership	Last Known Use	Reason for no use
Abbey Stadium	Redditch	1x adult 11v11, 1x youth 11v11	Local Authority	Unknown	No pitches marked out
Abbeydale	Redditch	1x youth 11v11, 1 mini 7v7	Local Authority	Unknown	No pitches marked out
Coppice Meadow	Redditch	5x 7v7	Local Authority	Unknown	No pitches marked out
Ipsley Park	Redditch	1x adult 11v11, 1 mini 7v7	Local Authority	Unknown	No pitches marked out
Washford Park	Redditch	1x adult 11v11, 1x youth 11v11	Local Authority	Unknown	No pitches marked out

### Future Provision and Proposed Supply Changes

- 4.21. There a number of planning proposals for playing pitch sites in the Redditch that have potential implications for the future supply of playing pitches. Although currently these are only aspirations and have not been formally submitted, they are highlighted in table 11 below:

# Redditch Borough Council

## *Playing Pitch Strategy – Stage C Assessment*

**Table 11: Development Proposals**

Playing Pitch Development Proposals	Impact on Outdoor Sports Supply
Development of a 3G pitch at Trinity High School, on the site of the current sand dressed AGP.	Loss of one sand dressed AGP. Although there is no formal hockey use of the site, the impact of this loss would need to be explored as part of stage D of this study.
Development of one full size 3G pitch at Redditch Community Sports and Social Club	Loss of one full size, high quality adult 11v11. The site is currently home to a thriving adult and junior football club, located on a community site with tennis, bowls and excellent ancillary facilities.
Development of one full size 3G pitch at Tudor Grange Academy	Loss of one full size standard quality grass pitch. The grass pitches are currently used a by a number of clubs.

### Imported/Exported Demand

- 4.22. While a PPOSS is typically delivered for a single local authority area and considers all supply and demand from that given Study Area, it is understood that residents are typically not restricted by local authority boundaries when undertaking sport and physical activity. For instance, clubs and participants may travel outside of the local authority to access facilities that are of higher quality or more affordable, or where they are no longer able to access to facilities within the local authority.
- 4.23. Although no imported or exported demand for grass football provision was highlighted during consultation, it is apparent that a number of AGP facilities are catering for demand from outside of Redditch, and a number of teams are forced to travel outside of Redditch to use 3G provision for training. Further commentary on this is included in the AGP section of the report.

### Current Position for football

- 4.24. This section presents the current position for grass football pitches for the study area. It will first highlight the supply information regarding sites, number of pitches and their quality. Data regarding the demand for all types of football in Redditch will then be set out, before a supply and demand analysis is undertaken for each site, and Redditch as a whole.
- 4.25. Worcestershire FA, Birmingham FA and the Football Foundation have introduced PitchPower - revolutionising the state of grass football pitches across England, ensuring that by 2030, grassroots football has 20,000 'good' quality pitches to enjoy. PitchPower is a web app that allows organisations to quickly and easily inspect grass pitch(es) directly from a mobile phone. The app is used to submit information about pitch(es) to the Grounds Management Association who assess the site.

## Redditch Borough Council

### Playing Pitch Strategy – Stage C Assessment

- 4.26. After the assessment is complete, a report is received which evidences the technical quality score and provides recommendations as to what is needed to improve the pitch(es). The pitch quality scores given in **Table 12**, match the PitchPower assessments provided by Worcestershire FA and Birmingham FA. Further, site specific details regarding PitchPower are given in 2.13.
- 4.27. The following clubs/sites are being supported by Worcestershire FA, Birmingham FA and Football Foundation through the PitchPower process defined above. Through this initiative, these clubs and sites will have improved maintenance regimes with the aim of improving the quality of pitches, allowing additional usage during the season. The PitchPower quality ratings reflect the pitch assessment ratings in this report.
- Terry’s Memorial Playing Field – All pitches on site received a PQS score of Upper Basic, which for the purposes of this report will be classed as Standard. Recommendations from the report include the improvement of mowing, line marking, aeration, decompaction, turf nutrition, weed control, seeding, top dressing and scarification.
- 4.28. Table 12 indicates the quality assessments for each site and pitch in Redditch. The following information includes only sites which are available for community use.

**Table 12: Pitch Quality in Redditch – Total**

Site	Postcode	Adult Pitches			Youth 11v11 Pitches			Youth 9v9 Pitches			7v7			5v5		
		Good	Standard	Poor	Good	Standard	Poor	Good	Standard	Poor	Good	Standard	Poor	Good	Standard	Poor
Arrow Valley Park	B98 0LJ		5									1				
Feckenham Park	B96 6HY		1													
Greenlands Playing Fields	B98 7RS		5			1			3			1			2	
Morton Stanley Park	B97 5YS		1						1			1			1	
Redditch Borough Community Sports and Social Club	B97 6PB	2						1			1			2		
Terry’s Memorial Playing Field	B97 4RN		2									2			1	
Trinity High School	B98 8HB			1												
Tudor Grange Academy	B98 7UH	1	1													
<b>Total Available Pitches – Redditch</b>		<b>3</b>	<b>15</b>	<b>1</b>	<b>0</b>	<b>1</b>	<b>0</b>	<b>1</b>	<b>4</b>	<b>0</b>	<b>1</b>	<b>5</b>	<b>0</b>	<b>2</b>	<b>4</b>	<b>0</b>

## Redditch Borough Council

### *Playing Pitch Strategy – Stage C Assessment*

4.29. Across the study area, 19% of pitches are rated as good quality, 78% are rated standard and 3% are classified as poor quality.

#### Ancillary Facilities

4.30. The quality of ancillary facilities across Redditch have been assessed via a combination of site visits and user consultation to reach and apply an agreed rating as follows:

<b>Good</b>	
<b>Standard</b>	
<b>Poor</b>	

4.31. Ancillary facility ratings are primarily influenced by the type of amenities which are available on a site accompanied by their quality, such as a clubhouse, changing rooms, showering provision, car parking, dedicated official and spectator facilities and boundary fencing. Table 13 below identifies the findings for football sites that are actively utilised for football across Redditch.

**Table 13: Site by site analysis of ancillary facility quality.**

Site name	Analysis area	Ancillary facility quality
Arrow Valley Park	Redditch	Good – Football Foundation funded changing room refurbishment. Small, basic facility, with good access and car parking.
Feckenham Park	Redditch	Standard – Average clubhouse with changing rooms, officials room and small kitchen. Access to the site is difficult and parking is very limited.
Greenlands Playing Fields	Redditch	Poor – Changing facilities part of social club building, which is in need of major refurbishment. Large parking area and easy access to the site.
Morton Stanley Park	Redditch	Standard – Basic changing rooms and toilets on site, however there is S106 money available for the redevelopment of the ancillary facilities
Redditch Borough Community Sports and Social Club	Redditch	Good – Extensive high quality ancillary facilities, with changing rooms, bar, kitchen, media room, education centre and managers office.
Terry's Memorial Playing Field	Redditch	-
Trinity High School	Redditch	Standard – School Changing
Tudor Grange Academy	Redditch	Standard – School Changing

# Redditch Borough Council

## Playing Pitch Strategy – Stage C Assessment

### Current Demand

- 4.32. Football is the most popular team sport across Redditch. With a total of 116 teams across 21 clubs as shown in Appendix XX. All clubs in Redditch were approached as part of the PPOSS process, to gain an understanding of their facility provision, developments and future growth. An overview is included below in Table 14. Of the 116 teams in Redditch, club consultation covered 106 of them, resulting in a 91% response rate

**Table 14: Club Consultation**

Club	Site Name	Consultation Summary
Redditch United	Trico Stadium and Terry's Memorial Field	The club has 38 teams covering all ages groups and providing for both male and female football. The first team play in the Southern League – Premier Division Central and fixtures take place at the TRICO Stadium (3G) in Redditch. The pitch also caters for the majority of training demand for the club, whilst the adjacent Terry's Memorial Field supports much of the clubs match play for junior and youth teams. Although the club have use of their own 3G pitch, they have to rent other AGP provision to cater for all teams, and travel outside of Redditch to do this.
South Redditch Eagles	Greenlands Playing Fields	The club has 9 teams from U5 to U14 playing 5v5, 7v7, 9v9 and 11v11 formats. In the recent seasons, the club has seen a decrease in adult 11v11 and mini soccer U7-U10 teams and an increase in youth teams. The club has plans to increase adult men's and women's teams one each. The club would like to have additional artificial surfaces for winter training. There has been evidence of dog fouling, litter on the pitches and inadequate length of grass and pitch maintenance contributing to a lot of matches being cancelled. The ancillary facilities are also rated poor.
Redditch Borough FC	Redditch Borough Community and Sports Club	The club has 35 sides in total spread across all categories. The number of teams have increased year on year and the club is focused on continuing in the same direction for the next three years. The club has new facility/pitch development plan to improve the overall facility and cater the increased demand. There is a marked requirement of new 3G pitches. Pitch slope, grass coverage and pitch maintenance are a few issues faced by the club. The Covid-19 pandemic rather had a positive impact on the club's development and facility with the pitches having been unused, therefore able to improve.
VKL United	Redditch Borough Community and Sports Club	The club has one senior male team which has remained the same in the past three years. There club has no new unmet match-play or training demands. The quality of the pitch has been poor with inadequate length of grass, evidence of dog fouling, litter/glass on the pitch and substandard pitch maintenance.
Studley Lions	-	The club has one senior male team 11v11 using synthetic pitch. There is a requirement of additional pitches. The pitch is used for other informal use. The pitch has good coverage of grass, and the club is contented with the overall quality of the pitches.
Headless Cross	Morton Stanley Park	The club has four youth teams participating in leagues and one U7 mixed development training side introduced this season. The club would like to add one youth 7v7 girls' team and one mini soccer 5v5 team. The goal mouths often tend to be bare as it is open for public use. Length of the grass, dog fouling and pitch maintenance are a few other issues. The quality of the pitch has not changed partly due to better winter season. The overall pitch conditions and facilities have been rated as good and the club has no new development plans.

## Redditch Borough Council

### *Playing Pitch Strategy – Stage C Assessment*

Club	Site Name	Consultation Summary
Kingfisher FC	Tudor Grange Academy	The club has four youth girls' team and one mini soccer U10 team. The club is keen to introduce four other girls' teams. The maintenance of the pitch by the school has been average.
Feckenham United	Feckenham Park	The club has one senior male team which has decreased due to lack of availability of player support officers. The club would like to add two more adult teams, one male and one female over the following seasons. The club has development plans for new drainage and improved changing rooms and clubhouse. There is also a requirement of pitch barriers. Even though there has been evidence of dog fouling and complaints of pitch slope, the quality of the pitch has improved due to the appointment of a permanent groundsman. The club suffered financially during the Covid-19 pandemic.

- 4.33. Included in the numbers above are 5 Pan-Disability teams run by Redditch United. Age groups and pitch usage for these teams are highlighted in table 15 below.

**Table 15: Pan-Disability Football Provision**

Club	Sub-Area	Age Group	Team Category	Site Location
Redditch United	Redditch	Open Aged	7v7	Trico Stadium/South Bromsgrove High 3G
Redditch United	Redditch	Open Aged	7v7	Trico Stadium/South Bromsgrove High 3G
Redditch United	Redditch	Open Aged	5v5	Trico Stadium/South Bromsgrove High 3G
Redditch United	Redditch	Open Aged	5v5	Trico Stadium/South Bromsgrove High 3G
Redditch United	Redditch	Open Aged	11v11	Trico Stadium/South Bromsgrove High 3G

- 4.34. Table 16 outlines the current football demand in Redditch. The 116 total teams is made up of 29 adult men's, 3 adult women's, 24 youth 11v11 boys', 6 youth 11v11 girls', 12 junior boys' 9v9 teams, 3 junior girls' 9v9 teams, 22 7v7 and mini soccer teams and 17 5v5 mini soccer teams. The total number also includes 5 pan-disability teams, as highlighted above.

**Table 16: Football Provision**

Age Groups	Male Teams	Female Teams	Total
<b>Redditch</b>			
Adult 11v11	29	3	32
Youth 11v11	24	6	30

## Redditch Borough Council Playing Pitch Strategy – Stage C Assessment

Age Groups	Male Teams	Female Teams	Total
9v9	12	3	15
7v7	17	5	22
5v5	15	2	17
<b>Total</b>	<b>97</b>	<b>19</b>	<b>116</b>

- 4.35. Table 17 outlines the current football provision for women and girls in Redditch, focussing on female only teams (team numbers below are included in the overall data in 2.22). All female only demand is catered for by Kingfisher Youth, Redditch Borough and Redditch United.

**Table 17: Female Only Football Provision**

Club	Site Location	Age Group	Adult 11v11	Youth 11v11	9v9	7v7	5v5	Total No. Teams
Kingfisher Youth	Tudor Grange Academy	U9	-	2	1	2	1	6
Redditch Borough Juniors	Redditch Borough Community Sports and Social Club	U8	1	2	2	2	2	9
Redditch United	Trico Stadium	Open Age	2	2	-	-	-	4
<b>Totals</b>	<b>Redditch</b>		<b>3</b>	<b>6</b>	<b>3</b>	<b>4</b>	<b>3</b>	<b>19</b>

### Demand Driven by Unmet Demand

- 4.36. While a large amount of future demand will be driven by population growth, there is also unmet demand for football identified within the study area. Unmet demand is defined as demand that currently exists but does not currently equate to actual participation due to a range of reasons. For instance, unmet demand could be in the form of a team that has currently got access to a pitch for its members but nowhere to train or vice versa.
- 4.37. No clubs in the study area identified any unmet demand during the consultation process.

### Demand Driven by Latent Demand

- 4.38. Unlike unmet demand, latent demand for football has been identified across the study area. Latent demand is demand that evidence suggests may be generated from the current population should they have access to more or better provision. This could include feedback from a sports club which may feel that it could set up and run an additional team if it had access to improved provision.

## Redditch Borough Council

### *Playing Pitch Strategy – Stage C Assessment*

- 4.39. The table below identifies all clubs, that identified latent demand (not currently active), which they are aiming to convert into affiliated football demand within the next 3 - 5 years. This provides an estimation of the number of new teams that will be required in Redditch, in addition to the teams generated by population growth.
- 4.40. It should be noted that the latent demand commentary (LD commentary) contains a summary of the comments provided by clubs during consultation, which the consultancy team has used to quantify the estimated number of teams.
- 4.41. Table 18 shows that there is the potential latent demand on 11.5 MES per week across the study area. The majority of latent demand is generated by Redditch Borough FC.
- 4.42. Although clubs in the study area have identified a large amount of growth in the next 3-5 years, there has only been a growth of five teams in Redditch since the LFFP was produced in 2019. Although the Covid-19 pandemic may have negatively influenced team growth during this time, it demonstrates that latent demand predictions may not be accurate.

**Table 18: Latent demand highlighted through consultation**

Club	Sub-Area	Latent Demand commentary	Total latent demand (MES)
Headless Cross Youth FC	Redditch	Youth girls 11v11, mini 5v5	1
Feckenham United FC	Redditch	1x adult men and 1x adult female	1
Kingfisher FC	Redditch	Girls youth 11v11, girls youth 9v9, girls youth 7v7, 5v5	2
Redditch Borough FC	Redditch	2x Adult men, 1x adult women, 2x youth boys 11v11, 2x youth girls 11v11, 2x youth girls 9v9, 2x youth girls 7v7, 2x 5v5.	6.5
South Redditch Eagles	Redditch	1x adult men and 1x adult female	1
<b>Total</b>			<b>11.5</b>

### Displaced Demand

- 4.43. While a PPOSS is typically delivered for a single local authority area and considers all supply and demand from that given Study Area, it is understood that residents are typically not restricted by local authority boundaries when undertaking sport and physical activity. For instance, clubs and participants may travel outside of the local authority to access facilities that are of higher quality or more affordable, or where they are no longer able to access to facilities within the local authority.
- 4.44. No displaced demand was highlighted during consultation by any club in the study area.

# Redditch Borough Council

## *Playing Pitch Strategy – Stage C Assessment*

### Future Demand

#### Demand Driven by Population Growth

- 4.45. To calculate the future demand for football in the Study Area, Team Generation Rates have been calculated using the current number of teams and the current population. This measure allows us to calculate what size of population (for various age groups) will typically cause enough demand to create a football team in each of the age categories.
- 4.46. This Team Generation Rate can then be applied to the population projections for the Study Area to confirm how population growth or reduction will affect the number of teams in each of the key age groups. It is to be noted that population is just one factor in estimating future teams. Other factors such as NGB initiatives and amount of available provision has a large level of influence.
- 4.47. All figures have been rounded to the nearest whole number.
- 4.48. Table 19 below demonstrates that there is no predicted increase in teams due to population growth in Redditch by 2040

**Table 19: Future demand driven by population growth**

Age Groups	Current no. of teams	Current population	Future population (0.77% increase by 2040)	Current TGR*	Population change	Projected team no. change
<b>Redditch</b>						
Adult Men 11v11 (16-45yrs)	28	15937	16060	569	123	0
Adult Women 11v11 (16-45yrs)	3	15740	15861	5247	121	0
Youth Boys 11v11 (12-15yrs)	24	2178	2195	91	17	0
Youth Girls 11v11 (12-15yrs)	6	2021	2037	337	16	0
Youth Boys 9v9 (10-11yrs)	12	1134	1143	95	9	0
Youth Girls 9v9 (10-11yrs)	3	1052	1060	351	8	0
Mini Soccer Mixed 7v7 (8-9yrs)	20	2241	2258	112	17	0
Mini Soccer Mixed 5v5 (6-7yrs)	15	2241	2258	149	17	0
<b>Total projected new teams by 2040</b>						<b>0</b>

## Redditch Borough Council

### *Playing Pitch Strategy – Stage C Assessment*

- 4.49. Utilising the current demand for football in Redditch and how the population is projected to grow by 2040, we can provide an estimation of how the growth of demand is likely to be allocated. This data, shown in MES, assumes that teams will require access to 1MES every two weeks, as they will play alternatively home and away. This information is shown in Table 20 below.

#### Football Supply and Demand information

- 4.50. For every site that has grass football provision, an analysis has been undertaken to assess whether each pitch on the site has enough capacity to meet the current level of demand for affiliated football. This analysis has been undertaken for two separate time periods; a) weekly and b) during the peak period.
- 4.51. This compares the weekly carrying capacity (in Match Equivalent Sessions – MES) of each individual pitch type with the demand that is placed upon that pitch type over the full week. It may also be referred to as the ‘theoretical capacity’ as it assumes that demand will be spread across the week and is calculated solely from the theoretical carrying capacity of the pitch to withstand training and match play. Table 20 below illustrates how weekly carrying capacity is allocated to each pitch type, depending on its quality rating.
- 4.52. It is assumed that all education-based pitches have usage of 1 MES per week due to curricular/extra-curricular activity, the exception where the actual demand for MES has been inputted including all grass pitches with known community use.

**Table 20: Carrying Capacity per Pitch Type. All Figures in MES**

Quality score	Adult football	Youth football	Mini soccer
Good (80-100%)	3	4	6
Standard (50-79.9%)	2	2	4
Poor (0-49.9%)	1	1	2

- 4.53. Table 21 below provides an overview of all pitch capacity and demand across all available sites across Redditch and pitch type. All unavailable sites have been dismissed from this list as there is no community use on these sites. A full list of the unavailable sites can be [found in Table 21.](#)

# Redditch Borough Council

## Playing Pitch Strategy – Stage C Assessment

Table 21: An overview of all pitch capacity and demand across all available sites across Redditch and pitch type

Site name	Postcode	Availability	Security of use	Pitch supply	Pitch Quality Rating	Pitch capacity MES	Pitch demand MES	Balance Weekly	Peak period	Site Summary
Arrow Valley Park	B98 0LJ	Available	Secure	5x Adult 11v11	Standard	10	2	8	3	5x Adult 11v11, 1x Youth 7v7. grass slightly too long and goal areas well used. Flat and even pitches, clearly marked out, poor drainage. FF foundation funded changing rooms. Section 106 funding for the changing room refurb. Easy access, adjacent car park
Arrow Valley Park	B98 0LJ	Available	Secure	1x 7v7	Standard	4	0	4	1	
Feckenham Park	B96 6HY	Available	Secure	1x Adult 11v11	Standard	2	2.5	-0.5	No spare capacity due to overplay	1x adult 11v11, slight slope, good goal posts, well-marked out, good grass length, some patches of poor drainage, basic ancillary facilities, no parking. Overall good pitch. FA Pitch improvement plan proposed on this site. However scheduled ancient monument site
Greenlands Playing Fields	B98 7RS	Available	Secure	5x Adult 11v11	Standard	10	1.5	8.5	3.5	Average pitch, average posts, good grass length, well-marked out, poor drainage. Slight slope, but even ground. 5v5 pitch very poor. Standard rec ground site. Ancillary facilities in need of update. Part of social club.
Greenlands Playing Fields	B98 7RS	Available	Secure	1x Youth 11v11	Standard	2	1.5	0.5	No spare capacity	
Greenlands Playing Fields	B98 7RS	Available	Secure	3x Youth 9v9	Standard	6	1	5	2	
Greenlands Playing Fields	B98 7RS	Available	Secure	1 7v7	Standard	4	1	3	No spare capacity	

# Redditch Borough Council

## Playing Pitch Strategy – Stage C Assessment

Site name	Postcode	Availability	Security of use	Pitch supply	Pitch Quality Rating	Pitch capacity MES	Pitch demand MES	Balance Weekly	Peak period	Site Summary
Greenlands Playing Fields	B98 7RS	Available	Secure	2x 5v5	Standard	8	0.5	7.5	1.5	
Morton Stanley Park	B97 5YS	Available	Secure	1x Adult 11v11	Standard	2	1	1	No spare capacity	Headless Cross Juniors club use. Have got s106 money to improve pitches and ancillary facilities. - Poor to average markings, no goals, long grass, flat and even pitch, poor drainage.
Morton Stanley Park	B97 5YS	Available	Secure	1x Youth 9v9	Standard	2	1	1	No spare capacity	
Morton Stanley Park	B97 5YS	Available	Secure	1 7v7	Standard	4	0	4	1	
Morton Stanley Park	B97 5YS	Available	Secure	1x 5v5	Standard	4	0.5	3.5	1	
Redditch Borough Community Sports and Social Club	B97 6PB	Available	Secure	2x Adult 11v11	Good	6	9.5	-3.5	No spare capacity due to overplay	
Redditch Borough Community Sports and Social Club	B97 6PB	Available	Secure	1x Youth 9v9	Good	4	3	1	No spare capacity	Pitch 1 - High quality 11v11 with spectator rail and dugouts. Good drainage. No floodlights, but permission has been granted for them. All other pitches - good quality, slight slope across pitches. Excellent site, with extensive ancillary facilities. 2x adult 11v11, 1x 9v9, 1x 7v7, 2x 5v5.
Redditch Borough Community Sports and Social Club	B97 6PB	Available	Secure	1 7v7	Good	6	3	3	No spare capacity	
Redditch Borough Community Sports and Social Club	B97 6PB	Available	Secure	1x 5v5	Good	6	5	1	No spare capacity	
Terry's Memorial Playing Field	B97 4RN	Available	Secure	2x Adult 11v11	Standard	4	6.75	-2.75	No spare capacity due to overplay	
Terry's Memorial Playing Field	B97 4RN	Available	Secure	2 7v7	Standard	8	4.5	3.5	No spare capacity	2x adult 11v11, 2x 7v7, 1x 5v5. Rec ground site, lack of parking. Average surfaces. 7v7 marked out across a rugby pitch. No ancillary facilities. S106 money has been used to improve pitches.

## Redditch Borough Council

### *Playing Pitch Strategy – Stage C Assessment*

Site name	Postcode	Availability	Security of use	Pitch supply	Pitch Quality Rating	Pitch capacity MES	Pitch demand MES	Balance Weekly	Peak period	Site Summary
Terry's Memorial Playing Field	B97 4RN	Available	Secure	1x 5v5	Standard	4	2.5	1.5	No spare capacity	
Trinity High School	B98 8HB	Available	Unsecure	1x Adult 11v11	Poor	1	1	0	No spare capacity	Long grass, sloped, poor line markings. Good goals and nets.
Tudor Grange Academy	B98 7UH	Available	Secure	2x Adult 11v11	1x Good / 1x Standard	5	4	1	No spare capacity	Home to a number of clubs, one very good grass pitch, a couple of areas that can be marked out for football but are not permanently

# Redditch Borough Council

## *Playing Pitch Strategy – Stage C Assessment*

### Adult 11v11 Analysis total Peak Capacity

- 4.54. Table 22 provides the current and future position for 11v11 adult grass pitch provision across the full study area, for peak times.
- 4.55. This table indicates spare MES capacity across the Redditch currently and by 2040. The data demonstrates that there is a small deficit of adult 11v11 pitches across Redditch (-0.25 MES). This is largely a result of the current overplay at Redditch Borough Community Sports and Social Club and Terry’s Memorial Playing Field.
- 4.56. When latent demand predictions are added, there is predicted to be a total future deficit of -3.75 MES.

**Table 22: Adult 11v11 Supply and Demand Analysis - Peak. All Figures in MES**

Analysis Area	Spare capacity MES (Peak)	Total Overplay	Current position	Future demand – Population Growth	Future position – Population Growth Only	Unmet/Latent demand	Future position – Incl Latent Demand
Redditch	6.5	-6.75	-0.25	0	-0.25	3.5	-3.75

### Youth 11 v 11 Analysis - Peak

- 4.57. Table 23 provides the current and future position for 11v11 youth grass pitch provision across the full study area, at peak times.

**Table 23: Youth 11v11 Supply and Demand Analysis - Peak. All Figures in MES**

Analysis Area	Spare capacity MES (Peak)	Total Overplay	Current position	Future demand – Population Growth	Future position – Population Growth Only	Unmet/Latent demand	Future position – Incl Latent Demand
Redditch	0	0	0	0	0	3	-3

- 4.58. Table 23 illustrates that there is no spare peak time capacity for Youth 11v11 pitches in Redditch. As there is no overplay of the pitch type, it leaves a current position of 0 MES of spare capacity per week.
- 4.59. After latent demand predictions have been added, there is expected to be an under supply of -3 MES.

## Redditch Borough Council

### Playing Pitch Strategy – Stage C Assessment

#### Youth 9 v 9 Analysis Peak

4.60. Table 24 provides the current and future position for 9 v 9 youth grass pitch provision across the full study area.

**Table 24: Youth 9v9 Supply and Demand Analysis. All Figures in MES**

Analysis Area	Spare capacity MES (Peak)	Total Overplay	Current position	Future demand – Population Growth	Future position – Population Growth Only	Unmet/Latent demand	Future position – Incl Latent Demand
Redditch	2	0	2	0	2	1.5	0.5

4.61. Table 24 highlights that there is a spare 2 MES of peak time capacity in the study area.

4.62. When adding growth due to latent demand for youth 9v9 provision, this is predicted to reduce to 0.5 MES of spare capacity by 2040.

#### Mini 7 v 7 pitch supply Peak

4.63. Table 25 provides the current and future position for 7v7 mini grass pitch provision across the full study area.

**Table 25: Mini 7v7 Supply and Demand Analysis. All Figures in MES**

Analysis Area	Spare capacity MES (Peak)	Total Overplay	Current position	Future demand – Population Growth	Future position – Population Growth Only	Unmet/Latent demand	Future position – Incl Latent Demand
Redditch	2	0	2	0	2	1.5	0.5

4.64. The analysis presented in Table 25 illustrates that 7v7 pitches in Redditch have a current position of 2 MES of spare capacity, and no overplay of any pitches.

4.65. Growth due to latent demand predictions will reduce this capacity to 0.5 MES by 2040.

# Redditch Borough Council

## Playing Pitch Strategy – Stage C Assessment

### Mini 5 v 5 pitch supply Peak

Table 26: Mini 7v7 Supply and Demand Analysis. All Figures in MES

Analysis Area	Spare capacity MES (Peak)	Total Overplay	Current position	Future demand – Population Growth	Future position – Population Growth Only	Unmet/Latent demand	Future position – Incl Latent Demand
Redditch	2.5	0	2.5	0	2.5	2	0.5

- 4.66. Table 26 states that there is a current spare capacity of 2.5 MES at peak times in Redditch, which is mainly a result of the surplus of 5v5 provision at Greenlands Playing Fields.
- 4.67. However, when adding latent demand predictions, this spare capacity will reduce to 0.5 MES per week.

### Football Summary

- 4.68. This section summarises the findings from the football analysis, which will form the basis of the recommendation and action plan section for Redditch.

Table 27: Summary of Supply and Demand Redditch Peak time of Play

Pitch type	Demand (match equivalent sessions per week)				Future Position - Population Growth Only	Unmet/Latent Demand	Future position – Incl Latent Demand
	Actual Spare Capacity (total)	Overplay (Peak time)	Current Total	Future Demand - Population Growth			
Adult 11v11	6.5	-6.75	-0.25	0	-0.25	3.5	-3.75
Youth 11v11	0	0	0	0	0	3	-3
Youth 9v9	2	0	2	0	2	1.5	0.5
Mini 7v7	2	0	2	0	2	1.5	0.5
Mini 5v5	2.5	0	2.5	0	2.5	2	0.5

### Football Summary

- 4.69. There is currently a small amount of spare capacity on 9v9, 7v7 and 5v5 grass pitches in Redditch. Youth 11v11 pitches are at a neutral position, whilst there is currently a small deficit of adult 11v11 pitches. Once latent demand from clubs is taken into account, the current spare capacity is expected to turn into a small deficit of -5.25 MES on grass pitches in Redditch.
- There are 37 grass football pitches across 8 sites that are available for community use.
  - 36 of the 37 (97%) in Redditch provide secured community use access (i.e., pitches owned or leased by local authorities or clubs/associations). 3% pitches are unsecured community use pitches, all of which are provided at education sites.
  - Redditch United aspire to improve the pitch quality at Terry's Memorial Playing Field and have FA/FF approved schedules in place through the PitchPower app.
  - Only Terry's Memorial Playing Field is not serviced by any sort of clubhouse or changing rooms, and only Greenlands Playing Field has poor quality ancillary facilities
  - There are 116 teams across 21 clubs in Redditch. This consists of 29 adult men's, 3 adult women's, 24 youth 11v11 boys', 6 youth 11v11 girls', 12 junior boys' 9v9 teams, 3 junior girls' 9v9 teams, 22 7v7 and mini soccer teams and 17 5v5 mini soccer teams. The total number also includes 5 pan-disability teams.
  - There is a current total weekly balance of 6.25 MES of spare capacity across all grass pitches in Redditch.
  - There are no new teams predicted due to population growth in Redditch. However, consultation identified 11.5 MES per week of latent demand. When considering this as part of the future supply and demand analysis, the current spare capacity turns into a deficit 5.25 MES by 2040.
  - The only pitch size to be currently overplayed is Adult 11v11. However, by 2040 Youth 11v11 pitches will also be overplayed and the surplus of other pitch types will be significantly reduced to less than 1 MES per week.

# Redditch Borough Council

## Playing Pitch Strategy – Stage C Assessment

### Football Summary

- 4.70. This section summarises the findings from the football analysis, which will form the basis of the recommendation and action plan section for Redditch. Table 28 includes the response to 5 key questions which are identified in the Sport England PPOSS Guidance Checklists. Using these key questions to summarise the findings of each of the sport chapter creates consistency, not only within the report but with similar PPOSS projects in neighbouring local authorities and further afield.

**Table 28: Key PPOSS findings for football in the Redditch study area**

Key Question	Analysis
What are the main characteristics of the current supply and demand for provision?	<p>There are a total of 37 available pitches across 8 sites in Redditch. Of these 19 (51%) are adult 11v11 sized, 16% are 7v7, 16% are 5v5, 14% youth 11v11 and 3% 9v9.</p> <p>There are 21 football clubs in Redditch, making up 116 teams. The largest proportion of these are made up of adult male 11v11 teams (24%).</p>
Is there enough accessible community use provision to meet current demand?	<p>There is a current spare capacity of 6.25 MES per week across Redditch. This is created by 9v9, 7v7 and 5v5 pitches, whilst there is a current deficit of -0.25 for adult 11v11 pitches.</p>
Is the provision that is accessible of sufficient quality and appropriately maintained?	<p>Although some clubs highlighted poor quality pitches and inadequate maintenance regimes as current issues, only 3% of pitches were classified as poor quality. 19% of pitches are rated as good quality and 78% are rated standard. The only poor quality provision is at Trinity High School. The highest quality pitches are those located at Redditch Borough Community Sports and Social Club, which is a major club site supporting 35 teams with aspirations to develop further.</p> <p>Redditch United have engaged with the PitchPower programme to attempt to improve the quality of maintenance at Terry’s Memorial Playing Fields. The pitches on site are currently rated as standard, but there are aspirations for this to increase to good.</p>
What are the main characteristics of the future supply and demand for provision?	<p>There is only an 0.77% projected growth in population by 2040, meaning that there are no additional teams required as a result. However during consultation, 23 additional teams were identified as being needed due to latent demand identified by clubs. Based on the current grass pitch supply this will result in a need for an additional 11.5 MES.</p> <p>There are current aspirations by Tudor Grange Academy, Trinity High School and Redditch Borough for the development for 3G facilities. The proposals at Redditch Borough and Tudor Grange would result in the loss of good and standard grass pitches respectively. Any development at Trinity High would require the loss of a poor quality sand dressed AGP.</p>
Is there enough accessible and secured community use provision to meet future demand?	<p>The current surplus in MES is predicted to reduce to become a deficit of -5.25 MES by 2040 due to latent demand. Although the PPOSS looks forward to 2040, latent demand could be turned into actual demand much quicker and have a more significant impact than currently predicted.</p> <p>Although only adult and youth 11v11 pitch types are expected to be in a deficit by 2040, all other pitches will only have 0.5 MES of spare capacity per week.</p>

## 5. Hockey Analysis

### Introduction and Strategic Context

- 5.1. In order to understand the overall objectives and priorities of England Hockey (EH), an analysis of key recent strategies and documentation has been undertaken and summarised below.

### England Hockey Facilities Strategy (2017)

- 5.2. In 2017 England Hockey published the latest facilities strategy for the sport, which replaces the previous 2012 edition and aims to help every hockey club in England work towards having appropriate and sustainable facilities that provide excellent experiences for players.
- 5.3. The Vision is: For every hockey player in England to have appropriate and sustainable facilities that provide excellent experiences for players.
- 5.4. The Mission is: More, Better, Happier players with access to appropriate and sustainable facilities
- 5.5. The club market for hockey is well structured and clubs are required to affiliate to England Hockey to play in community leagues. As a result, only a few occasional teams lie outside of the EH affiliation structure. Schools and Universities are the other two areas where significant hockey is played.
- 5.6. England Hockey has the ambition of growing participation by 10,000 adults and 32,500 children. To enable this, the following three objectives have been highlighted.
- **Protect:** To conserve the existing hockey provision. EH currently has over 800 pitches that are used by hockey clubs (club, school, universities). We need to retain the current provision where appropriate to ensure that hockey is maintained across the country.
  - **Improve:** To improve the existing facilities stock (physically and administratively). The current facilities stock is ageing and there needs to be strategic investment into refurbishing the pitches and ancillary facilities. There needs to more support for clubs to obtain better agreements with facilities providers & education around owning an asset.
  - **Develop:** To strategically build new hockey facilities where there is an identified need and ability to deliver and maintain. This might include consolidation hockey provision in a local area where appropriate. Research has identified key areas across the country where there is a lack of suitable Hockey provision and there is a need for additional pitches. There is an identified demand for multi pitches in the right places to consolidate hockey and allow clubs to have all of their provision catered at one site.

## Redditch Borough Council

### *Playing Pitch Strategy – Stage C Assessment*

- 5.7. Competitive league hockey matches, and training can only be played on sand filled, sand dressed, or water based artificial grass pitches (AGPs). Although competitive, adult and junior club training cannot take place on third generation turf pitches (3G), 40mm pitches may be suitable for introductory level hockey, such as school curriculum low level hockey. EH’s Artificial Grass Playing Surface Policy details suitability of surface type for varying levels of hockey, as shown below.

**Table 29: England Hockey Guidelines on Artificial Surface Types Suitable for Hockey**

Category	Surface	Playing Level	Playing Level
England Hockey Category 1	Water surface approved within the FIH Global/National Parameters	Essential International Hockey - Training and matches	Desirable  Domestic National Premier competition Higher levels of EH Player Pathway Performance Centres and upwards England
England Hockey Category 2	Sand dressed surfaces within the FIH National Parameter	Essential Domestic National Premier competition Higher levels of player pathway: Academy Centres and Upwards	Desirable  All adult and junior League Hockey Intermediate or advanced School Hockey EH competitions for clubs and schools (excluding domestic national league)
England Hockey Category 3	Sand based surfaces within the FIH National Parameter	Essential All adult and junior club training and league Hockey EH competitions for clubs and schools Intermediate or advanced schools’ hockey	
England Hockey Category 4	All 3G surfaces	Essential None	Desirable  Lower-level hockey (Introductory level) when no category 1-3 surface is available.

- 5.8. For senior hockey teams, a full-sized pitch for competitive matches must measure at least 91.4 x 55 metres excluding surrounding run off areas which must be a minimum of two metres at the sides & three metres at the ends. England Hockey preference is for four metre side and five metre end run offs, with a preferred overall area of 101.4 x 63 metres though a minimum overall area of 97.4 x 59 metres is accepted.
- 5.9. It is considered that a hockey pitch can accommodate a maximum of four matches on one day (peak time) provided that the pitch has floodlighting. Training is generally midweek and requires access to a pitch and floodlights.

### Supply

## Redditch Borough Council

### *Playing Pitch Strategy – Stage C Assessment*

- 5.10. Redditch has two sites that have full size sand dressed pitches that are suitable for competitive hockey. Although both are available to community, only the Redditch Cricket Hockey and Rugby Club (Redditch CHR) has secured access.
- 5.11. Table 30 below details of all pitches that are suitable for competitive hockey in Redditch, and their locations are shown in Map 4 below

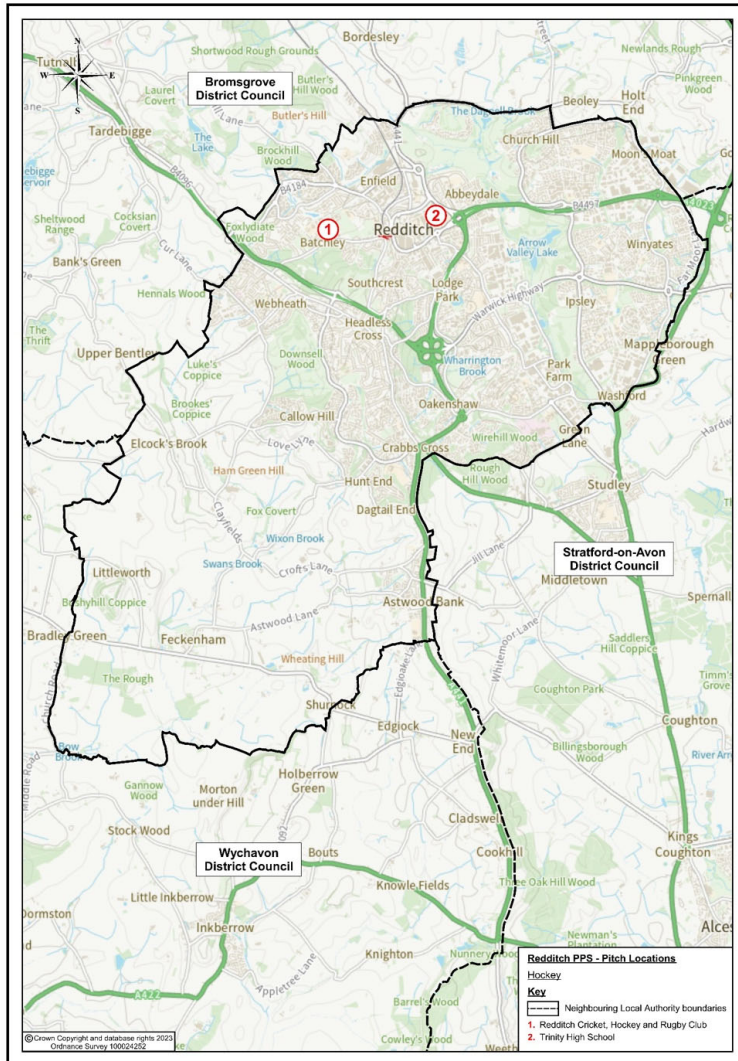
**Table 30: Quantity Overview for Hockey Facilities in Redditch**

Site Name	Sub Area	Postcode	Pitch Type	Size	Floodlit	Pitch Rating	Availability	Security of Use	Peak Time Availability – No. Hours
Redditch Cricket, Hockey and Rugby Club	Redditch	B97 4SP	Sand Dressed	Full – 100x60	Yes	90% - Good	Available	Secure – Sports Club Owned	36
Trinity High School	Redditch	B98 8HB	Sand Dressed	Full – 100x62	Yes	50% - Poor	Available	Unsecure	36

# Redditch Borough Council

## Playing Pitch Strategy – Stage C Assessment

Map 4: Hockey Pitches in Redditch



## Redditch Borough Council

### *Playing Pitch Strategy – Stage C Assessment*

- 5.12. As part of the PPOSS, each site that is suitable for hockey has been assessed by an independent research team and scored according to England Hockey’s facilities framework contained within the 2013 Sport England Playing Pitch Guidance. **Table 31** provides a summary of the quality assessments for all hockey suitable sites in the Study Area, with assessments undertaken at two key sites.
- 5.13. **Table 30** indicates that both of the AGPs in Redditch are available for community use, but only Redditch CHR provides security of tenure.
- 5.14. The pitches differ in terms of quality with Redditch CHR being a very high quality, sand dressed surface, whilst Trinity High is a poor-quality pitch. The pitch was developed in 1999, and refurbished in 2011. The pitch requires resurfacing, there are flooding issues at the north-east end and the infrastructure around the pitch is aging.
- 5.15. Redditch CHR satisfies all demand for all community hockey in the area. The site summary is below:
- **Redditch Cricket, Hockey and Rugby Club:** A large, sports club owned site cricket, rugby provision as well as the full-sized floodlit sand dressed AGP. The pitch is of very good quality as is other the infrastructure, apart from goals some of which need to be replaced. The pitch mainly caters for hockey activity, however there is some football training and informal use. The surface was replaced in 2019.
- 5.16. It is presumed that each of the facilities has a peak time community availability of 36 hours. Peak times are 5pm – 9pm weekday evenings and 10am – 6pm at weekends. This results in there being a possible 20 hours of peak availability Monday – Friday and 16 hours during Saturday and Sunday.

### Ancillary Facilities

**Table 31: Quality Overview for Hockey Facilities in Redditch**

Site name	Analysis area	Ancillary facility quality
Redditch CHR	Redditch	Good – Excellent clubhouse catering for all rugby, cricket and hockey usage. Extensive building with very good amenities.
Trinity High School	Redditch	Standard – school changing facilities available for use.

### Current Demand

- 5.17. The only hockey club in Redditch currently is Redditch Hockey Club. The club have a total of 14 teams and 206 members. Although the club are based at Redditch Cricket, Hockey and Tennis Club. The scale of club demand is demonstrated by Table 32, which shows the club profile by age group and gender.

## Redditch Borough Council

### *Playing Pitch Strategy – Stage C Assessment*

- 5.18. The tables below highlight how the profile of hockey teams across Redditch creates demand for AGP match and training hours throughout the week. Senior teams train midweek, however, some junior teams/development centres may train on weekends, whilst university teams normally play midweek fixtures. It is important to understand that this will impact on capacity analysis when considered with the competitive match slots required above.

**Table 32: Match Demand for Hockey in Redditch**

	Number of teams	Competitive hours required		
		Weekday	Saturday	Sunday
Senior teams (16-65)	6	0	3	0
Junior teams (11-15)	8	0	0	2

**Table 33: Training Demand for Hockey in Redditch**

	Number of teams	Training hours required		
		Weekday	Saturday	Sunday
Senior teams (16-65)	6	4	0	0
Junior teams (11-15)	8	3.5	0	0

### Pitch Usage

- 5.19. It is important to understand that a number of sand filled pitches are also being used for football. In these instances, pitch quality deteriorates more quickly, and capacity for hockey clubs is also reduced. Table 34 demonstrates all community usage on the sand filled pitches across Redditch.

**Table 34: Supply and Demand Analysis for all Hockey Provision**

Site Name	Pitch Type	Clubs using the site			Total hours			
		Football	Hockey	Other	Mid-week	Saturday	Sunday	Total
Redditch Cricket, Hockey and Rugby Club	Sand Filled		Redditch Hockey Club		7.5	3	2	12.5
Trinity High School	Sand Filled	-	-	-	0	0	0	0

## Future Demand

### Demand driven by Population Growth

- 5.20. In order to calculate the future demand for Hockey in the Study Area, an agreed growth rate has been used in conjunction with the current number of teams across the study area. This measure allows us to calculate the expected number of participants and subsequent number of teams that will be present by the end of the lifetime of the local plan period (2040).
- 5.21. The growth rate has been agreed following consultation with England Hockey, based on experience and best practice from across the country. This is believed to be a more accurate projection than that provided by team generation rates (as used for the other sports included within the PPOSS), as it allows for the expected growth driven by success at the 2016 Rio Olympics, increasing level of junior demand across the sport and the level of informal activity such as pay and play.
- 5.22. Table 35 shows the current number of members in each of the age groups and applies a 5% growth rate, to calculate a projected number of members and teams.

**Table 35: Future Demand Projections for Hockey Teams in Redditch**

Sport and Age Groups	No. of members	5% growth	Projected number of members
Hockey Senior Men (16-55yrs)	75	4	79
Hockey Senior Women (16-55yrs)	35	2	37
Hockey Junior Boys (14-16yrs)	19	1	20
Hockey Junior Girls (14-16yrs)	15	1	16
Hockey Junior Boys (11-13yrs)	17	1	18
Hockey Junior Girls (11-13yrs)	15	1	16
Mixed (5-10yrs)	30	2	32
<b>Total</b>	<b>206</b>	<b>12</b>	<b>218</b>

- 5.23. Table 35 illustrates that with the 5% projected growth in participation, it is expected that there will be an additional 12 (rounded to allow for a small comfort factor) players over the period of the strategy.

---

## Redditch Borough Council

### *Playing Pitch Strategy – Stage C Assessment*

---

- 5.24. To calculate the expected growth in teams that this will generate, a ratio has been calculated based on the existing number of members and teams (1 team to every 14.7 members). There may be enough additional demand to require 1 additional team in Redditch by 2040.

#### **Demand Driven by Latent Demand**

- 5.25. No latent demand was identified as part of this study.

#### **Demand Driven by Informal Demand**

- 5.26. With the success of the England Women's team at the Rio 2016 Olympic Games and Tokyo 2021, accompanied by significant investment into the grass roots game by England Hockey, there is an aspiration to increase the amount of people playing informal hockey, either as an entry point into the more formal game or simply as a way of providing people with fun ways of keeping active.
- 5.27. Among others, England Hockey are looking to promote Back to Hockey, Rush Hockey and Indoor Hockey, all of which are easily accessible programmes that are easy for those who are not experienced hockey players to play and enjoy.
- 5.28. It is expected that as these informal forms of the game grow, there will be an increase in the number of participants playing both informal and formal hockey. The scenario testing section of the Strategy Document will look to calculate the future need for facilities, should this growth be realised.

#### **Supply and Demand Balance**

#### **Supply and Demand Balance – Spatial Analysis**

- 5.29. To calculate whether there is any spare capacity at hockey sites in the Study Area, Table 36 shows the supply and demand figures for community use hockey facilities in Redditch. This table contains demand (in hours) from competitive matches as well as training required by local clubs.
- 5.30. In order to assess the availability of hockey facilities at peak times, it has been assumed that the period of highest demand for hockey matches is on a Saturday.

## Redditch Borough Council

### *Playing Pitch Strategy – Stage C Assessment*

**Table 36: Supply and Demand Balance for Hockey in Redditch**

Site name	Supply (hours)			Demand (Hours: training and matches)			Balance (hours)		
	Week	Sat	Sun	Week	Sat	Sun	Week	Sat	Sun
Redditch Cricket, Hockey and Rugby Club	20	8	8	7	3	1	13	5	7
Trinity High School	20	8	8	0	0	0	20	8	8

- 5.31. Table 36 illustrates that there are 13 hours of mid-week spare capacity at Redditch CHR, a 5-hour surplus on a Saturday, and 7 hours of spare capacity on Sundays. There is no formal hockey usage of Trinity High School, and it should be noted that this table includes hockey demand only.
- 5.32. As is indicated in the AGP section of this report, there is a no demand for football usage on sand dressed AGPs in Redditch. Therefore [Table 37 below](#) demonstrates no changes to [Table 36](#).

**Table 37: Supply and Demand Balance for Hockey in Redditch with football usage included**

Site name	Supply (hours)			Demand (Hours: training and matches)			Balance (hours)		
	Week	Sat	Sun	Week	Sat	Sun	Week	Sat	Sun
Redditch Cricket, Hockey and Rugby Club	20	8	8	7	3	1	13	5	7
Trinity High School	20	8	8	0	0	0	20	8	8

- 5.33. The impact of expected growth in hockey demand will be addressed as part of the analysis later in this section.

### Peak Time Capacity Analysis

- 5.34. In line with the 2013 Sport England PPOSS guidance, this study has considered the total supply and demand for facilities, measured in match equivalent sessions per week.
- 5.35. While this is a valuable measure of whether or not AGP facilities are at capacity, the patterns of demand should also be considered when assessing whether there are sufficient facilities across the Study Area.
- 5.36. With this in mind, this section undertakes a peak time capacity analysis, to assess whether there are sufficient facilities during the periods that the greatest proportion of the population like to play hockey.

## Redditch Borough Council

### *Playing Pitch Strategy – Stage C Assessment*

- 5.37. This will indicate whether there is enough capacity to satisfy the demand where a large amount of hockey is played at the same time (e.g., are there enough match slots so that all adult and junior teams can to play at the favoured times on Saturday and Sunday?)
- 5.38. The following assumptions on peak times have been developed, based on standard practice for competitive grass roots hockey:
- There are 4 x 2 hours match slots on Saturday per pitch
  - There are 4 x 1.5 hours match slots on Sunday per pitch
- 5.39. It should be noted that two hockey suitable AGPs have been identified as available for community use as part of this study, therefore 4 match slots on each day of the weekend have been included for each of these sites in the peak time capacity analysis, producing a total peak time capacity of 8 match slots per day.

**Table 38: Peak Time Capacity Analysis for Redditch Hockey Provision (Calculated in Match Slots)**

Age Group (Preferred Match Slot)	No. of Teams	Peak Time Demand	Peak Time Capacity	Balance	Commentary
Adult (Saturday 10-6*)	6	3	8	5	5 MES spare capacity
Junior (Sunday 10-4)	2	1	8	7	7 MES spare capacity

*\*Adult fixtures are occasionally played on Sunday (depending on league rules), however for this analysis peak time adult demand is assumed to be Saturday.*

- 5.40. Table 38 indicates that, when including all available sites in the analysis, there is spare capacity of 5 MES for adult hockey and 7 MES for junior hockey across Redditch during periods of peak demand.

### Site by Site Analysis

- 5.41. Table 39 serves to summarise the key parts of the PPOSS assessment that have been identified so far within this sport specific section.

## Redditch Borough Council

### Playing Pitch Strategy – Stage C Assessment

**Table 39: Site by Site Analysis for Available Hockey Sites**

Site Name	Pitch Type and Size	Quality rating	Balance (Total hours)	Site Summary
Redditch Cricket, Hockey and Rugby Club	Sand Dressed – Full Size	90% - Good	25	A large, sports club owned site cricket, rugby provision as well as the full-sized floodlit sand dressed AGP. The pitch is of very good quality as is other the infrastructure, apart from goals some of which need to be replaced. The pitch mainly caters for hockey activity, however there is some football training and informal use. The surface was replaced in 2019. Home to Redditch Hockey Club which is comprised of 197 members at 8 teams.
Trinity High School	Sand Dressed– Full Size	50% - Standard	36	One, poor quality sand dressed AGP on an education site. The pitch is floodlit, with poor quality fencing and goal posts for small sided football and hockey. The site caters for curricular and extra-curricular provision during school hours only. There is evidence of flood damage in one corner. There is a desire from the school to resurface the pitch, creating a 3G facility.

### Capacity Analysis

- 5.42. The following section contains the summary capacity analysis for hockey in Redditch. This takes into consideration the current position for hockey, as well as a potential future analysis.

**Table 40: Summary of Capacity Balances for Hockey (Hours)**

Analysis	Notes	Supply (Hours)			Demand (matches + training in hours)			Balance (supply minus demand)		
		Week	Sat	Sun	Week	Sat	Sun	Week	Sat	Sun
All secured sites	This includes all secured sites and their capacity	20	8	8	7	3	1	13	5	7
With displaced demand	As above, including displaced demand	20	8	8	7	3	1	13	5	7
All secured sites; FUTURE analysis	As above, but including the projected growth in demand	20	8	8	7	3	1	13	5	7

- 5.43. Table 40 illustrates that there is a currently a surplus of secure, available hockey provision in Redditch. As there is no displaced demand, projected growth or latent demand, this data is predicted to remain the same over the course of the local plan period (2040).

## Redditch Borough Council

### *Playing Pitch Strategy – Stage C Assessment*

- 5.44. When considering both secure and unsecure available sites, the spare capacity becomes significantly larger due to the lack of use at Trinity High School.

### Hockey Summary

- 5.45. This section summarises the findings from the hockey analysis, which will form the basis of the recommendation and action plan section for Redditch.
- 5.46. Table 41 includes the response to 5 key questions which are identified in the Sport England PPOSS Guidance Checklists. Using these key questions to summarise the findings of each of the sport chapters creates consistency, not only within the report but with similar PPOSS projects in neighbouring local authorities and further afield.

**Table 41: Key PPOSS Findings for Hockey in Redditch**

Key Question	Analysis
<b>What are the main characteristics of the current supply and demand for provision?</b>	<p>There are two AGPs in Redditch that are suitable for Hockey, one of which is sports club owned and the other is educational. Both of the pitches are available for community use, however only Redditch CHR has security of tenure. There is currently one hockey club in Redditch, comprising of 8 teams and 197 members. Redditch HC utilise the Redditch CHR site.</p> <p>There is no hockey use of the other available site at Trinity High School.</p>
<b>Is there enough accessible and secured community use provision to meet current demand?</b>	<p>There only available secured site in the study area is Redditch CHR. However, this pitch is able to meet the demand for hockey as there is a current total over supply of 25 sessions.</p>
<b>Is the provision that is accessible of sufficient quality and appropriately maintained?</b>	<p>Redditch CHR is an excellent surface and site, with a 'good' quality score of 90%. The AGP at Trinity High School is rated as poor and has signs of flood damage in one corner.</p>
<b>What are the main characteristics of the future supply and demand for provision?</b>	<p>Although Hockey has enjoyed significant growth since the Women's gold medal at the Rio and Tokyo Olympics, in recent years, future demand for hockey in Redditch is projected to change very little. There is no latent, displaced or population growth demand identified.</p> <p>There are aspirations by Trinity High School to develop the existing AGP into a 3G pitch, however this is not confirmed and would have little impact on the supply and demand balance in Redditch.</p>
<b>Is there enough accessible and secured community use provision to meet future demand?</b>	<p>There is adequate current supply to meet future demand for hockey in Redditch.</p>



## 6. Rugby Union Analysis

### Introduction and Strategic Context

- 6.1. The Rugby Football Union (RFU) is the national governing body responsible for grassroots and elite rugby in England, with the season operating from September to May.

### RFU Strategic Plan (2021 Onwards)

- 6.2. In April 2021, the RFU published the England Rugby Strategy – A Successful and Thriving Game Across England, with the main purpose being to “enrich lives, introduce more people to rugby and develop the sport for future generations”. Of the eight priorities following goals are of particular relevance to this strategy:

- **Enabling positive, enjoyable player experiences –**
  - Improve accessibility for women and girls across the game
  - Make the game inclusive and attractive for 14–18-year-olds
  - Redefine playing opportunities, structures and competitions for current and future player, recognising the strategic importance of the adult male game
- **Supporting clubs to sustain and grow themselves –**
  - Provide support to club volunteers so they can attract new, diverse volunteers and help clubs be fit for the future and self-sustaining
  - Provide support to help clubs maximise the benefit from their facilities and assets
  - Help clubs manage their risks and liabilities
- **Driving rugby union to reflect the diversity of society –**
  - Improve the diversity of all facets of our game and continue to create an inclusive environment for all
- **Building a deep understanding of players, volunteers and fans to shape the future of the game –**
  - Build a two-way relationship with our players to identify when and where they play rugby, and how they feel about the game
  - Generate greater insights into our volunteers, customers and stakeholders to better serve their needs
- **Connect with and grow the rugby community –**
  - Unite and engage the rugby community through proactive and effective communication
  - Promote the core values across the game

- 6.3. The objectives and targets of the RFU will be referenced throughout this strategy and utilised to prioritise facility development projects as part of the recommendations and action plan section.

### England Rugby Women and Girls Action Plan (2021-2027)

- 6.4. Alongside the general strategic plan referenced above, England Rugby has also developed the ‘Every Rose’ action plan. The strategy highlights the historical progress that has been achieved and makes four key commitments to the women and girls’ game, to be accomplished by 2027.

- 6.5. The aims of the ‘Every Rose’ action plan that are relevant to this PPOSS are:

- **Increasing number of female players to 100,000 by 2027**
  - **Retain** – understand where the highest number of players, clubs and teams sit; provide clear and appropriate formats for women and girls to play and align appropriate playing opportunities; utilise existing and new data and insight to continually assess the rapid growth of the game, to ensure the needs of women and girls are continually being met.
  - **Recruit** – ensure that the growth of the grassroots game is supported by having the right facilities and volunteers in the right places; transition players from introductory programmes in the community into clubs by creating playing opportunities that players wish to take part in.
- **Enablers**
  - **Coach and match official development** – increase the visibility of female coaches and match officials from ethnically diverse communities in the grassroots and elite game; support female coaches and match officials with potential to impact the growth and success of future teams through targeted mentoring.
  - **Volunteer and leadership development** – provide support to club and CB volunteers to help them attract new and diverse volunteers; communicate effectively with current female leaders and ex-players and invite them onto training and leadership pathways.
  - **Competitions and playing opportunities** – deliver a competition framework and girls game age bands designed to retain more women and girls for longer in line with player feedback

## Redditch Borough Council

### Playing Pitch Strategy – Stage C Assessment

## Supply

### Quantity Overview

- 6.6. There are 4 sites in Redditch that have rugby union provision, 3 of which are available for community rugby union usage. Both Trinity High School and Walkwood CE Middle School are unavailable to the community. The ownership of the 4 rugby union sites across the Study Area is shown in Table 42.

**Table 42: Ownership of Rugby Pitches in Redditch**

Sub-category	Ownership	Management
Charity, Trust	0	0
Education	2	2
Local Authority	2	1
MOD	0	0
Private	0	0
Sport Club	0	1

- 6.7. Table 43 provides a breakdown of the rugby sites in Redditch, the majority of which are available for community use.

**Table 43: Rugby Site Breakdown of Security of Community Use**

Site Name	Sub area	Postcode	Community use on site	Security of Use	Ownership	Adult	Pitch Quality	Mini/Midi	No. Floodlit Pitches	Ancillary Facilities
Redditch Cricket, Hockey and Rugby Club	Redditch	B97 4SP	Available	Secured - Freehold	Local Authority	1	D1/M2	5	1x senior / 2x junior	Good
Terry's Memorial Field	Redditch	B97 4RN	Available	Unsecured	Local Authority	2	D1/M1	0	0	N/A
Trinity High School	Redditch	B98 8HB	Unavailable	Unsecured	Education	1	D0/M0	0	0	School changing facilities
Walkwood CE Middle School	Redditch	B97 5AQ	Unavailable	Unsecured	Education	1	D1/M0	0	0	School changing facilities

### Quality Assessment

- 6.8. Each site was visited and assessed by SLL using non-technical assessments as determined by the RFU. The methodology for assessing rugby pitch quality analyses two key elements; the maintenance programme and level of drainage.
- 6.9. Each pitch is scored and classified in one of three categories. These represent actions required to improve site quality. A breakdown for each of the two scoring elements and three respective categories is provided in the following two tables.

**Table 44: Rugby Pitch Maintenance Quality Assessment Specifications. Source: RFU PPOSS Guidance**

Category	Overall Quality Rating
MO	Action requires significant improvements to the maintenance programme
M1	Action requires minor improvements to the maintenance programme
M2	Action requires no improvements to the maintenance programme

**Table 45: Rugby Pitch Drainage Quality Assessment Specifications. Source: RFU PPOSS Guidance**

Category	Overall Quality Rating
DO	Action on pipe draining system is needed on pitch
D1	Action on silt drainage system is needed on pitch
D2	No action is needed on pitch drainage
D3	No action is needed on pipe drainage or slit drainage.

- 6.10. These scores are then combined to provide a match equivalent capacity, as calculated in Table 46 below. Depending on the score of a site, a pitch is assigned a certain carrying capacity which can then be used to calculate the overall capacity of a site.

## Redditch Borough Council

### *Playing Pitch Strategy – Stage C Assessment*

**Table 46: Match Equivalent Calculation for Rugby Pitches. Source: Appendices 4a to 4c – Rugby Football Union**

Drainage	Maintenance		
	Poor (M0)	Standard (M1)	Good (M2)
Natural Inadequate (D0)	0.5	1.5	2
Natural Adequate (D1)	1.5	2	3
Pipe Drained (D2)	1.75	2.5	3.25
Pipe and Slit Drained (D3)	2	3	3.5

6.11. Table 47 summarises the quality assessment results for those sites currently used by the community.

**Table 47: Quality Summary by Pitch Type**

Drainage	Maintenance		
	Poor (M0)	Standard (M1)	Good (M2)
Natural Inadequate (D0)	1	-	-
Natural Adequate (D1)	1	1	1
Pipe Drained (D2)	-	-	-
Pipe and Slit Drained (D3)	-	-	-

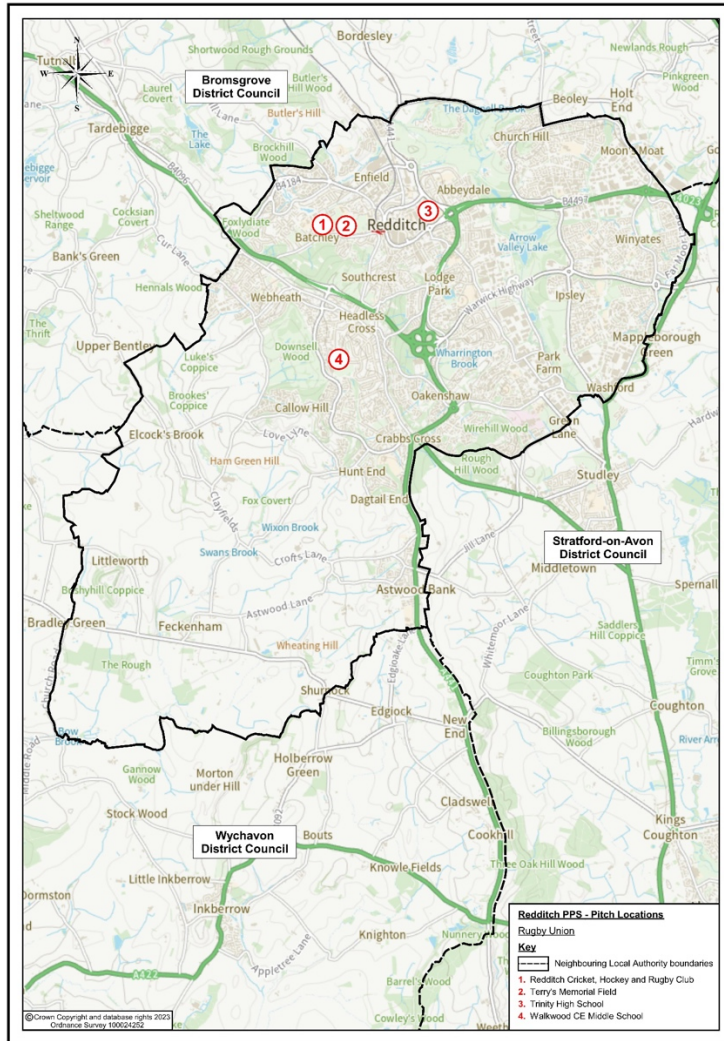
6.12. The quality of pitches across Redditch varies significantly from good to poor. Redditch Cricket, Hockey and Rugby Club is rated as D1/M2 with a supply of 18 MES total. Terry’s Memorial Field is assigned D1/M1, Walkwood CE Middle School is D1/M0 and the only poor site in Redditch is Trinity High School with a rating of D0/M0.

6.13. Map 5 shows the geographic location of the rugby pitches across the Study Area

# Redditch Borough Council

## Playing Pitch Strategy – Stage C Assessment

Map 5: All Rugby Pitches across Redditch



## Redditch Borough Council

### *Playing Pitch Strategy – Stage C Assessment*

#### Current Demand

- 6.14. Through the demand consultations with clubs, only one club has been identified as playing in Redditch. Information regarding team numbers and types for Redditch RFC can be found in Table 48.

**Table 48: Rugby Club Profiles for Responding Clubs. Source: PPOSS Club Consultations**

Club	Adult teams (male)	Adult teams (women)	Junior Boys' teams	Junior Girls' teams	Mini / Midi teams	Total
Redditch RFC	3	-	4	3	6	13

- 6.15. Redditch RFC were consulted with as part of the PPOSS process. The summary is highlighted below in Table 49.

**Table 49: Summary of Demand Consultations from Rugby Clubs in Redditch**

Club	Consultation Summary
Redditch RFC	The club has 13 teams, consisting of 3 senior male, 4 junior boys and 6 mini/midi teams. All fixtures and training take place at their home ground. Over the past three seasons there has been a small decrease in the number players from youth ages groups, due to diminishing interest. The club have secured funding to refurbish and redevelop the clubhouse, which will allow them to cater to their members needs more efficiently. The main issues raised by the club are regarding lack of car parking and improper use of the site (dog waste, litter, vandalism).

#### Future Demand

##### Future Demand driven by Population growth

- 6.16. In order to calculate the future demand for rugby in Redditch, a Team Generation Rate (TGR) has been calculated using the current number of teams and the current population. This measure allows us to calculate what size of population (for various age groups) will typically cause enough demand for a rugby team.
- 6.17. This Team Generation Rate can now be applied to the population projections for the Study Area to confirm how population growth or reduction will affect the demand for teams in each of the key age groups.
- 6.18. Table 50 shows the current and future population projections for Redditch. There is a predicted 0.77% increase in population between 2020 and 2040.

## Redditch Borough Council

### *Playing Pitch Strategy – Stage C Assessment*

**Table 50: Future population projections for Redditch (2020 – 2040)**

Modelled scenarios	Population ONS 2020	Population Change (0.77% increase)	Future Population 2040
Redditch	85,165	654	<b>85,819</b>

- 6.19. Table 51 shows the TGR calculations for Redditch. Based on future population projections a total of 3 new teams will be created by 2038. Although there may be a small increase in demand in the south, any growth due to population increase will be in the north sub-area.

**Table 51: Future Demand Projections for Rugby Union Teams in Redditch Based on TGR Data**

South Sub Area							
Age Group	No. of teams	Current population in age group	Future population (0.77% increase)	Current TGR	Population Change	Potential Change in Team no.	Total teams by 2038
Rugby Union Senior Men (19-45yrs)	3	14,511	14,623	4,837	112	0	3
Rugby Union Senior Women (19-45yrs)	0	14,414	14,525	0	111	0	0
Rugby Union Youth Boys (13-18yrs)	4	3,036	3,059	759	23	0	4
Rugby Union Youth Girls (13-18yrs)	3	2,820	2,842	940	22	0	0
Rugby Union Mini/Midi Mixed (7-12yrs)	6	6,642	6,693	1,107	51	0	6
<b>Total – Redditch</b>						<b>0</b>	<b>13</b>

***\*RFU have a key strategic objective to increase the number of women and girls' teams. This could lead to the development of women and girls' teams across all sub-areas.***

- 6.20. Table 51 illustrates that there is no projected increase in demand for rugby teams across Redditch, as a result of population growth.
- 6.21. While the TGR calculation does not project a growth in female senior or youth age groups, it should be noted that one of the RFU's key strategic objectives is to increase female participation, with potential investment leading to a growth in demand. An analysis of latent demand will be undertaken in the following section to assess whether future female provision should be planned for.

---

## Redditch Borough Council

### *Playing Pitch Strategy – Stage C Assessment*

---

- 6.22. It is important to note that this calculation assumes that clubs, the council and the RFU do not improve their marketing or participation schemes over the period and are therefore no more successful than they are now in attracting new players to participate in rugby in in the study area. It is expected that there will be improved channels of digital communication and improved maintenance technology, as well as higher quality ancillary provision. The output of this will be a higher quality and improved ability to generate demand and convert it into participation.

#### Future Demand driven by Latent demand

- 6.23. Whilst there is no predicted growth of rugby union due to population increase, it is likely that Redditch RFC may be successful in converting latent demand into actual demand, therefore increasing the number of people playing rugby union. The table below identifies latent demand (not currently active), which the club are aiming to convert into rugby union demand within the next 3-5 years. This provides an estimation of the number of new teams that will be required in Redditch.
- 6.24. Table 52 illustrates that four additional teams have been projected as part of the latent demand calculations.
- 6.25. This latent demand will be combined with the projected increase in demand generated from population growth and incorporated into the future supply and demand analysis for rugby union provision.

**Table 52: Latent Demand for Rugby Union in Redditch**

Club	Adult Male	Adult Female	Youth Boys	Youth Girls	Mini/Midi	Total
Redditch RFC	0	1	1	1	1	4

#### Supply and Demand Balance

- 6.26. This section of the report brings together the supply of rugby union pitches across the study area and combines it with community use demand data. A supply and demand analysis is then undertaken for all sites that provide community use rugby provision, which is subsequently brought together to provide a view of the current and future position for rugby union across the study area.
- 6.27. Table 53 overleaf brings together the key data from this chapter, for all rugby union sites in Redditch. The key issues are identified for each site, as well as the supply and demand data, as explained in the sections below.

## Redditch Borough Council

### *Playing Pitch Strategy – Stage C Assessment*

#### Peak Time Capacity

- 6.28. To assess the availability of rugby union facilities at peak times, it has been assumed that the period of highest demand for rugby matches is on a Saturday afternoon for adult men; Sunday morning for mini and junior rugby union; and Sunday afternoon for adult women. Please note that all demand is measured in match equivalent sessions. Table 53 below shows the peak time capacity for available sites in Redditch; therefore, Walkwood CE Middle School and Trinity High have been removed from this table.

**Table 53: Peak Time Capacity at Rugby Club Sites**

Site Name	Sub Area	Peak Time Supply		Peak Time Demand			Capacity	
		Senior Pitch	Mini/Midi Pitch	Senior Pitch	Colts/Youth	Mini	Saturday Senior Pitch (1 session)	Sunday Senior Pitch (2 sessions)
Redditch Cricket, Hockey and Rugby Club	Redditch	2	5	1.5	6.5	3	-0.5	-3.5
Terry's Memorial Field	Redditch	4	0	0	0	0	2	2

- 6.29. To calculate whether there is any total spare capacity at rugby union sites in Redditch, Table 53 shows the supply and demand figures across all sites that have rugby union provision. This table demonstrates the sites that are currently being overplayed, as well as those that have spare capacity for grass pitch provision.
- 6.30. For example, Redditch Cricket, Hockey and Rugby Club – There is 1 senior rugby union pitch, therefore there is 1 peak time, senior sessions available each week. Redditch RFC have a demand of 1.5, senior MES per week. Therefore, there is an undersupply on a Saturday morning of 0.5 MES. There is also 1 youth team, peak time slot as well as 5 mini/midi MES available on a Sunday morning. There is a demand for 6.5 youth MES and 3 mini MES, therefore leaving a deficit of -3.5 MES at peak time on a Sunday.
- 6.31. Senior and youth teams are assumed to play on senior pitches and mini/midi teams play on mini pitches where possible. Match Equivalent Sessions are calculated as 0.5 per week for senior and youth teams, whilst mini/midi demand has been calculated at 0.25. This is due to the lack of mini pitches in the study area meaning that mini teams will use half a full-sized senior pitch every other week.
- 6.32. It is presumed that schools in Redditch have no peak time capacity, due to the lack of community use.
- 6.33. It should be noted that all figures are in Match Equivalent Sessions (MES) and the demand data includes both match play and training demand.

## Redditch Borough Council

### Playing Pitch Strategy – Stage C Assessment

- 6.34. Table 54 details how training and match demand is spread across pitches in Redditch. Training demand is assumed to occur midweek and can only be placed on floodlit grass pitches.
- 6.35. If training pitches become overplayed due to training demand, these are then removed from match pitch supply.
- 6.36. For clarity the table has also been divided into secure and unsecured sites. The latter is included to give an understanding of potential additional capacity if community use agreements can be negotiated.

**Table 54: Supply and Demand Capacity Balance by Site (All Figures in MES)**

Site	Sub Area	Availability	Security	Number of Floodlit Pitches	Mid-Week Day/Training			Weekend Match Day Senior/ Junior			Weekend Match Day Mini			Total Senior/Junior Match Pitch Balance	Unmet Mini Demand Placed on Senior Match Pitches (50% of Senior ME)	Total Pitch Balance
					Supply	Demand	Balance	Supply	Demand	Balance	Supply	Demand	Balance			
Redditch Cricket, Hockey and Rugby Club	Redditch	Available	Secured	2 <sup>1*</sup>	6	12	-6	3	5	-2	6	3	3	-8	0	-5
Terry's Memorial Field	Redditch	Available	Secured	0	0	0	0	4	0	4	0	0	0	4	0	4
<b>Overview of Secure Available Sites</b>				<b>2</b>	<b>6</b>	<b>12</b>	<b>-6</b>	<b>7</b>	<b>5</b>	<b>2</b>	<b>6</b>	<b>3</b>	<b>3</b>	<b>-4</b>	<b>0</b>	<b>-1</b>
Trinity High School	Redditch	Unavailable	Unsecure	0	0	0	0	0.5	0.5	0	0	0	0	0	0	0
Walkwood CE Middle School	Redditch	Unavailable	Unsecure	0	0	0	0	1.5	1.5	0	0	0	0	0	0	0
<b>Overview of Not Available Sites</b>				<b>0</b>	<b>0</b>	<b>0</b>	<b>0</b>	<b>2</b>	<b>2</b>	<b>0</b>	<b>0</b>	<b>0</b>	<b>0</b>	<b>0</b>	<b>0</b>	<b>0</b>

<sup>1</sup> There are three floodlit pitches at Redditch Cricket, Hockey and Rugby Club; 1x senior and 2x mini. Two of the floodlit mini pitches is designated as the training pitch, therefore these will be used to reflect training supply and will not be included in the weekend match day mini supply in [Table 13](#).

## Redditch Borough Council

### *Playing Pitch Strategy – Stage C Assessment*

6.37. Table 54 demonstrates that there is an undersupply of available, secured sites across Redditch to an extent of -1 MES. This undersupply is partly due to the large training demand at Redditch Cricket, Hockey and Rugby Club. There is no current rugby union community use at any education establishments. The capacity of the school sites is utilised through curricular and extra-curricular demand, therefore there is 0 MES spare.

#### Current and Future Position

6.38. **Utilising the data from the previous section, Table 55 shows** the current and future position for adult and junior rugby provision across the study area.

6.39. The points below provide further explanation on the terms used within the tables:

- Current balance: The supply and demand position for rugby pitches, when taking into consideration the extent of spare capacity and then deducting the amount of overplay
- Projected balance: The projected supply and demand analysis for 2038, using the current position and taking into consideration the additional demand from unmet, latent, displaced and future (population growth) demand
  - Unmet/latent demand: Potential demand that has been identified as not being converted yet. For more information see the latent and unmet demand sections of this needs assessment
  - Displaced demand: Demand that cannot be satisfied within the local authority, due to a lack of suitable facilities
  - Future demand: The projected growth of demand, calculated using Team Generation Rates and the population projections for each sub-area

6.40. Table 55 shows the current and future position for all grass rugby provision in the study area.

**Table 55: Current and Future Position for All Community Available Rugby Grass Provision**

Sub Area	Current Balance		Projected Balance	
	Training	Match	Training	Match
Redditch Study Area	-6	-4	-10	-6

6.41. Table 55 demonstrates that there is current deficit of -6 MES for training, which is largely a result of the lack of floodlit provision in the area. There is also a deficit of -4 MES for match play in the study area.

6.42. When taking latent demand into account, it is predicted that the training deficit will worsen to -10 MES and the match play deficit will increase to -6 MES. The issues with training capacity will be considered further as part of stage D of the PPOSS.

## Redditch Borough Council

### *Playing Pitch Strategy – Stage C Assessment*

#### Site by Site Analysis

6.43. Table 56 details the current and peak time balance, creating an accurate overview of actual balance of supply and demand across the Study Area.

**Table 56: Site by Site Analysis for Rugby Union Sites**

Site Name	Sub Area	Availability	Security of Use	Pitch supply	Pitch capacity	Community/school Pitch Demand	Balance	Peak Period Capacity
Redditch Cricket, Hockey and Rugby Club	Redditch	Available	Secured	1x senior / 5x mini	18	20	-2 MES	There can be no spare capacity as the site is overplayed
Terry's Memorial Field	Redditch	Available	Secured	2x senior	4	0	4 MES	2 MES
Trinity High School	Redditch	Unavailable	Unsecured	1x senior	0.5	0.5	0 MES	0 MES spare capacity
Walkwood CE Middle School	Redditch	Unavailable	Unsecured	1x senior	1.5	1.5	0 MES	0 MES spare capacity

#### Rugby Union Summary

6.44. This section summarises the findings from the rugby analysis, which will form the basis of the recommendation and action plan section Redditch.

6.45. Table 57 includes the response to 5 key questions which are identified in the Sport England PPOSS Guidance Checklists. Using these key questions to summarise the findings of each of the sport chapter creates consistency, not only within the report but with similar PPOSS projects in neighbouring local authorities and further afield.

# Redditch Borough Council

## *Playing Pitch Strategy – Stage C Assessment*

**Table 57: Key PPOSS Findings for Rugby Union in Redditch**

<b>Key Question</b>	<b>Analysis</b>
<b>What are the main characteristics of the current supply and demand for provision?</b>	<p>There are currently 4 rugby union sites in Redditch, with a total of 10 pitches. 6 of the pitches are located at Redditch Cricket, Hockey and Rugby Club. There are a total of 5 senior and 5 mini pitches in the study area.</p> <p>Of the 10 pitches, 8 are available to the community, on local authority owned sites. The remaining pitches are situated on education sites and are not accessible for community provision.</p> <p>Redditch RFC is the only club identified as playing in the study area, and consists of 3 senior, 7 youth and 6 mini/midi teams.</p>
<b>Is there enough accessible and secured community use provision to meet current demand?</b>	<p>Based on the supply and demand analysis, there is current deficit of -6 MES for training, which is largely a result of the lack of floodlit provision in the area, and deficit of -4 MES for match play sessions.</p>
<b>Is the provision that is accessible of sufficient quality and appropriately maintained?</b>	<p>Across Redditch 60% of pitches are rated as good, 30% are of standard quality and 10% are poor. Of the provision that is accessible to the community, 6 of 9 pitches are good quality and the remaining 3 are standard. Although currently there is enough match play sessions to meet demand, there is a need to create a more MES to cater for the training demand. Improvements to the maintenance and drainage of some sites would improve the carrying capacity and therefore reduce the over-playing of the pitches, however a key issue is the lack of floodlit provision. Scenarios regarding this will be considered during stage D of the PPOSS.</p>
<b>What are the main characteristics of the future supply and demand for provision?</b>	<p>It is estimated that 4 new teams will be generated through latent demand being turned into actual demand in the next 3-5 years. This will exaggerate the existing deficit of match play and training sessions. The expected new teams will be run by Redditch RFC and will likely include 2 senior, 1 youth and 1 mini team.</p>
<b>Is there enough accessible and secured community use provision to meet future demand?</b>	<p>Due to the expected increased future demand for rugby union provision, the under supply of training availability is expected to increase to -10 MES. This increase is nearly all a result of latent demand predictions and a lack of floodlit provision.</p> <p>The current deficit for match play is expected to increase to -6 MES by 2040 when latent demand is considered. There is no expected change in the supply of pitches in the study area.</p>

## 7. Cricket Analysis

### Introduction and Strategic Context

- 7.1. To understand the overall objectives and priorities of the England and Wales Cricket Board (ECB), an analysis of key recent strategies and documentation has been undertaken and summarised below.

### Inspiring Generations (2019 - 2024)

- 7.2. The ECB published its new strategic plan in 2019, with the ambition being to inspire a generation to say that ‘cricket is a game for me’.
- 7.3. The ECB wants to encourage more young people to form a lifelong relationship with cricket from an early age, to be passionate about the game throughout their lives, and to pass this passion on for generations to come.
- 7.4. The ECB will deliver in cricket’s purpose and ambition through six priorities:
- **Grow and nurture the core:** Ensure that there is a thriving county network at the heart of the domestic game
  - **Inspire through elite teams:** Create and celebrate the heroes at the pinnacle of the elite game
  - **Make cricket accessible:** Give more people the opportunity to engage with cricket more often
  - **Engage children and young people:** Inspire a new generation of players and fans to develop a love for cricket
  - **Transform women’s and girls’ cricket:** Drive cricket’s progress to becoming a truly gender-neutral sport
  - **Support our communities:** Use the purpose to connect communities and improve lives more broadly across society.
- 7.5. It is key that this PPOSS recognises the opportunity made available by Inspiring Generations and provides a framework that allows stakeholders to work together and deliver against the priorities identified above. It’s also vital that any facility development for cricket takes the objectives of the strategy into consideration, namely the growth of entry level cricket, women and girls’ cricket, T20 and engagement of previously hard-to-reach demographics groups.

### Development Priorities

#### All Stars Cricket (2017)

- 7.6. Launched in 2017, All Stars Cricket is an ECB initiative that provides children aged five to eight with an introduction to cricket, focusing on parental engagement in supporting the newly trained All Stars Cricket Activators, as well as having a special focus on establishing women's softball and cricket events.
- 7.7. It is key that this PPOSS recognises the opportunity made available by Inspiring Generations and All Stars Cricket and provides a framework that allows stakeholders to work together and deliver against the key objectives of 'more play', 'great teams' and 'inspired fans'.

#### Women's and Girls'

- 7.8. In consultation with the ECB, it has been identified that the development of female cricket is likely to have an impact on supply and demand in the area. Women's and girls' cricket is a national priority, with the aspiration to increase the number of women and girls' teams, increase the number of softball leagues and increase the number of hard ball teams.
- 7.9. Softball cricket is an ECB initiative aimed at women and girls to increase participation in cricket as a sport. The aim of softball cricket sections are enjoyment and participation; without pads, a hardball, a heavy bat and limited rules. Sessions follow a festival format with each session running for a maximum of two and half hours, shorter than traditional formats.

#### Consultation overview

- 7.10. In addition to the structure and guidance provided by the ECB, local cricket in Redditch is governed by Worcestershire Cricket. Both organisations have been consulted as part of the PPOSS process, with key priorities and facility development needs for Redditch highlighted below.
- 7.11. Cricket is a popular sport across the Study Area, with several affiliated teams playing as part of structured clubs. Team and clubs typically play as part of league structures, which include clubs from several different local authorities. Most teams in the study area are multi team clubs with thriving junior sections. 100% of clubs in Redditch responded to the club consultation requests.

# Redditch Borough Council

## *Playing Pitch Strategy – Stage C Assessment*

**Table 58: Redditch Cricket Club Consultation Summary**

Club	Site Name	Sub Area	Consultation Summary
Redditch Entaco CC	Redditch Cricket, Hockey and Rugby Club	Redditch	Redditch Entaco CC currently run 4 senior male teams, 1 senior female team and 5 junior teams, and have aspirations to increase the women and girls provision at the club. The ancillary facilities that the club have on site at scoreboard, 3 fixed artificial nets, moveable net and a clubhouse/pavilion. They in the process of sourcing a new roller and have a need for extra side screens.
Astwood Bank CC	Astwood Bank	Redditch	Astwood Bank have 5 senior male teams, 3 senior female teams, and 10 junior teams, four of which are female only. The clubs women and girls section is thriving and likely to expand further in the future. The club would also like to further develop links with the Asian community and disability groups. The club have plans to buy or rent an adjoining field so that they can add a 2 <sup>nd</sup> pitch. They also highlighted that they struggle to find qualified ground staff or senior coaches.
Feckenham CC	Feckenham CC	Redditch	Feckenham CC have 3 senior male teams, 1 senior female and 7 junior teams, all of which are male. The club do not have any aspirations to grow the number of teams in the coming years. According to consultation, the clubhouse and changing rooms are not fit for purpose and will require rebuilding, however the club are finding it challenging to source funding for this.

### Sub Areas

- 7.12. As part of the PPOSS process, Redditch is considered as one sub area.

### Supply

- 7.13. Table 59 below presents a summary of the total number of cricket pitches and wickets in Redditch, as well as the study area as a whole. Redditch has a total of 6 cricket sites, consisting of 48 grass wickets and 3 artificial wickets.
- 7.14. Table 59 illustrates the supply of cricket pitches across Redditch, and Map 6 demonstrates their location.

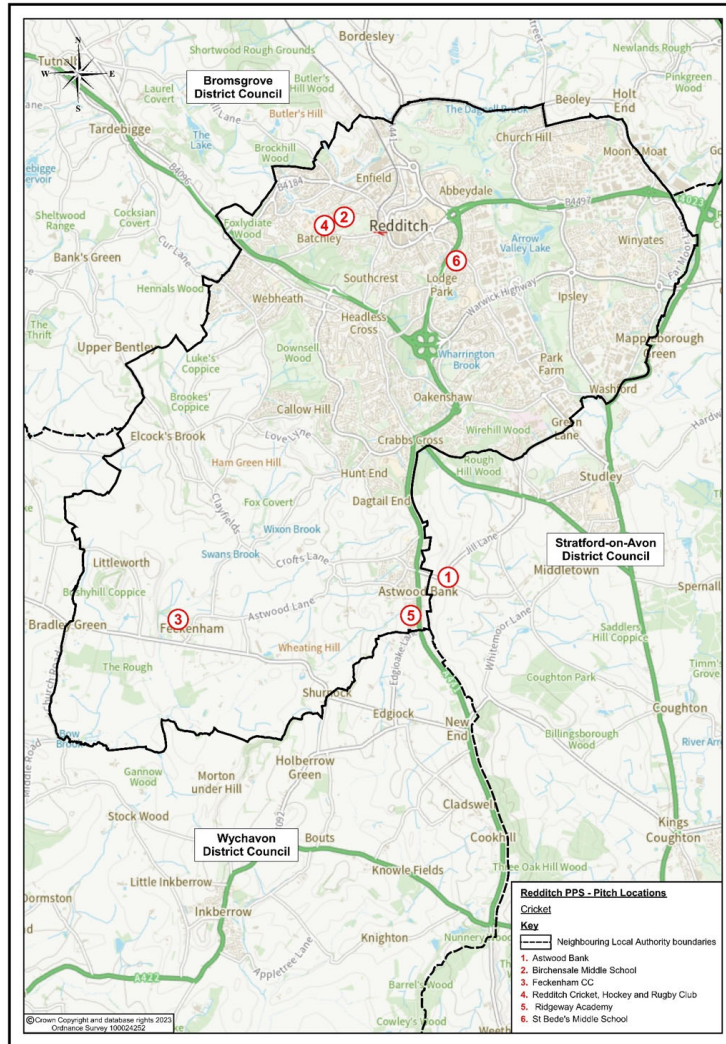
**Table 59: Supply of Cricket Pitches in Redditch**

Sub Area	Number of pitches	Grass wickets	Artificial wickets
Redditch	6	48	3

# Redditch Borough Council

## Playing Pitch Strategy – Stage C Assessment

Map 6: All Cricket Sites across Redditch



---

## Redditch Borough Council

### *Playing Pitch Strategy – Stage C Assessment*

---

#### Tenure and Management

- 7.15. Table 60 illustrates that there is an even split of cricket sites in Redditch that are owned by sports clubs (50%), and education establishments (50%). There are no sites owned by the local authority, which could have an impact on the long-term security of cricket across Redditch
- 7.16. A high level of cricket in education establishments also reduces the likelihood of significant community use from these facilities.

**Table 60: Cricket Site Ownership and Management in Redditch**

Type of ownership	Ownership	Management
Education	3	3
Sports Club	3	3
<b>Total</b>	<b>6</b>	<b>6</b>

#### Quality Assessment

- 7.17. Each site was visited and assessed by Strategic Leisure in summer 2021 using a non-technical assessment framework provided by the ECB. Where this was not possible with some school sites, desktop audits and consultations have been used to complete the assessment. The assessment considers the quality of playing surface, the quality of changing rooms and the score of the maintenance regime when compared to ECB recommendations. In addition to the site visits, the club consultation was used to validate the quality ratings. Each site is rated as GOOD ( $\geq 80\%$ ), STANDARD (between 50% and 80%) or POOR ( $< 50\%$ ).
- 7.18. The quality of a cricket pitch is essential in determining not only the amount of fixtures that can be played throughout a season, but also in ensuring the quality of cricket possible. A poor quality wicket is not conjunctive to fair competition and may favour the batting or bowling team. With the high amount of footfall each wicket has each game, a poor quality wicket can also be the cause of unnecessary injury, due to uneven ground causing fall hazards or unpredictable bounces. It is therefore important to ensure the high quality of each wicket used for cricket in Redditch.
- 7.19. Table 61 provides a picture of the mean percentage score for pitches in Redditch, based on the quality assessment results. A full site-by-site breakdown can be seen **in Table 62**. The overall standard of pitches across Redditch is 70.5% (Standard). However, there is a significant disparity in the quality of cricket provision in Redditch, which is further demonstrated in Table 61.

## Redditch Borough Council

### *Playing Pitch Strategy – Stage C Assessment*

**Table 61: Summary of Cricket Pitch Scoring in Redditch by Sub Area**

Sub Area	Pitches
Redditch	70.5% - Standard

7.20. Table 62 provides a site-by-site breakdown of cricket provision in Redditch.

**Table 62: Cricket Site Breakdown in Redditch**

Playing Pitch Sites	Club	Postcode	Community use on site	Secured community use	Ownership	Squares	Grass wickets	Artificial wickets	Quality of provision
Astwood Bank	Astwood Bank CC	B96 6PJ	Available	Yes	Sports Club	1	10	0	Good
Birchensale Middle School	-	B97 6HS	Unavailable	No	Education	1	0	1	Poor
Feckenham CC	Feckenham CC	B96 6HY	Available	Yes	Sports Club	1	20	0	Standard
Redditch Cricket, Hockey and Rugby Club	Redditch Encato CC	B97 4SP	Available	Yes	Sports Club	1	18	0	Good
Ridgeway Academy	-	B96 6BD	Unavailable	No	Education	1	0	1	Poor
St Bede's Middle School	-	B98 7HA	Unavailable	No	Education	1	0	1	Poor

7.21. There are 3 poor quality cricket pitches across Redditch, all of which are located on school sites. They have rated poor as they contain only single artificial wickets with mostly long, poorly maintained outfield. Feckenham is rated as standard quality, mainly due to the quality and length of grass on the outfield.

## Redditch Borough Council

### *Playing Pitch Strategy – Stage C Assessment*

#### Current Demand

#### Club and Team Profile

- 7.22. To understand how cricket is played across Redditch and the trends for demand across the game, this section assesses consultation responses from all clubs in the Study Area. All clubs responded to the survey.
- 7.23. Through the demand consultations with clubs, 3 clubs have been identified as playing in Redditch. This totals to 39 teams, with the majority of teams being junior age groups (22).
- 7.24. As part of the club consultation, Feckenham CC, Astwood Bank and Redditch Entaco highlighted some exported demand. Redditch Entaco utilise Studley Sports and Social Club, Astwood Bank have a second site at Henbury CC, whilst Feckenham occasionally use Studley High School. Both sites in Studley are located just outside of the study area and neither Feckenham CC or Redditch Entaco CC highlighted desire to relocate this demand back into the study area. Astwood Bank have outlines aspirations to buy or lease an additional pitch in the study area, indicating that they would like to relocate their exported demand.

**Table 63: Cricket Club Profiles**

Club	Sub-Area (Home Ground Location)	No. of competitive teams				Total
		Senior Men	Senior Women	Junior Male	Junior Female	
Astwood Bank CC	Redditch	5	3	6	4	18
Feckenham CC	Redditch	3	1	7	0	11
Redditch Entaco CC	Redditch	4	1	5	0	10
<b>Total</b>		<b>12</b>	<b>5</b>	<b>18</b>	<b>4</b>	<b>39</b>

- 7.25. To further understand the demand for cricket in Redditch, detailed consultations have been undertaken with all clubs. Accounts of these consultations including with key strategic priorities are referenced in the site-by-site assessment later in this section and in the consultation table above.

# Redditch Borough Council

## *Playing Pitch Strategy – Stage C Assessment*

### Future Demand

#### Demand Driven by Population Growth

- 7.26. In order to understand the future demand for cricket in the Study Area, a Team Generation Rate (definition provided in glossary) has been calculated using the current number of teams and the current population. This measure allows us to calculate what size of population (for various age groups) will typically cause enough demand for a cricket team.
- 7.27. This TGR can now be applied to the population projections for the Study Area to confirm how population growth or reduction will affect the demand for teams in each of the key age groups.
- 7.28. Table 64 illustrates that the greatest projected growth in cricket demand is projected to be in the adult men’s and junior boys’ groups.
- 7.29. The ECB and County Cricket Boards are making a conscious effort to increase female participation across the country, especially following England’s 2017 Women’s Cricket World Cup win. As a result, 3 new female teams have been added to the ‘Change in Team Numbers’ column’ (identified in **bold**). 1 senior and 1 junior new teams are anticipated in being developed at Feckenham CC and 1 new junior female team is expected at Redditch Entaco as part of this growth in women and girls cricket.

**Table 64: Impact of Population Projections on the Need for Cricket Provision in Redditch (TGRs by Sub Area)**

Redditch						
Age group	No. of teams in age group within the area	Current population in age group within the area	Future population in age group within the area (0.77% increase)	Current TGR	Population Change in Age Group	Change in Team Numbers in Age Group (numbers rounded up or down)
Cricket Open Age Men’s (18-55yrs)	12	20446	20603	1704	157	0
Cricket Open Age Women’s (18-55yrs)	5	20396	20553	4079	157	<b>1</b>
Cricket Junior (7-18yrs)	22	5519	5561	251	42	0
Cricket Junior Girls (7-18yrs)	0	5578	5621	0	43	<b>2</b>
<b>Total</b>	<b>39</b>	<b>51939</b>	<b>52338</b>	<b>1332</b>	<b>399</b>	<b>3</b>

## Redditch Borough Council

### *Playing Pitch Strategy – Stage C Assessment*

#### Future growth driven by latent demand

- 7.30. As well as demand driven by population growth, it is also likely that clubs and operators are successful in converting latent demand into actual demand, therefore increasing the number of people playing cricket. The table below identifies, through consultation, the amount of latent demand that the three clubs are aiming to convert into affiliated cricket demand within the next 3 - 5 years. This provides an estimation of the number of new teams that will be required in Redditch in addition to the teams generated by population growth.

**Table 65: Latent Demand for Cricket by Sub Area**

Club	Sub Area	Senior Cricket		Junior Cricket	
		Men	Women	Boys	Girls
Astwood Bank CC	Redditch	0	0	0	0
Feckenham CC	Redditch	0	0	0	0
Redditch Entaco CC	Redditch	0	1	0	1

- 7.31. It is important to note that the growth from latent demand should be treated with an element of caution, as the source of information is club consultations. In some instances, clubs may not have considered the governance and infrastructure requirements, associated with ongoing club growth. As a result, there may be instances where actual growth does not meet the projections identified during consultation.

#### Combined project growth in teams

- 7.32. Table 66 and 67 show the projected growth in cricket teams in Redditch via two separate 'sources'. Table 66 below summarises this projection.

**Table 66: Total projected future cricket team growth by Sub Area**

Analysis Area	Adult Teams		Junior Teams		Total
	Population Growth	Latent Demand	Population Growth	Latent Demand	
Redditch	1	1	2	1	5

- 7.33. Table 66 shows that there is projected to be a combined growth of 5 teams in Redditch by 2040. This is small growth is driven by latent demand of female cricket at Redditch Entaco CC and the anticipated development of women and girls cricket.

### Supply and Demand Balance

- 7.34. This section presents the supply and demand balance findings for cricket provision (both for current and future analyses) for the study, split by sub-area.
- 7.35. The pitch balance figures i.e., the relationship between supply and demand, have been calculated using the capacity and pitch quality ratings.
- 7.36. **Table 67** provides a supply and demand analysis for all cricket sites across the study area. To provide a greater understanding of how this spare capacity or deficit is dispersed around the across Redditch.
- 7.37. For all supply and demand analysis, the carrying capacity of grass and artificial wickets have been adjusted based on the quality rating of the facilities. Following consultation with the ECB, the following carrying capacity assumptions have been agreed:
- A good quality grass wicket can accommodate 5 matches per season (MPS)
  - Standard quality grass wicket can accommodate 4 MPS
  - A poor quality grass wicket has not been assigned any carrying capacity (0 MPS) as it is assumed that the wicket is not safe for formal or informal cricket use
  - Good and standard quality non-turf pitches (NTP's) can accommodate 60 MPS, however a poor quality NTP is not assigned any carrying capacity (0 MPS). In the analysis below, grass wickets are considered alone firstly. If applicable, a total balance include NTPs included after.

### Spare capacity and overplay

- 7.38. Overplay occurs when a cricket square is played on a greater amount than is recommended by the pitch's carrying capacity. If a square has 8 individual good quality wickets, then this provides an overall carrying capacity of 40 matches per season for that square. If, however, demand consultation indicates that there are 50 matches being played on that square over the course of a season, then that square (pitch) can be said to be overplayed.
- 7.39. There are a number of reasons for a pitch being overplayed, such as lack of alternative provision, poor site management, or poor quality wickets which lower the capacity for cricket to be played on the pitch.
- 7.40. Spare capacity is the opposite of overplay and occurs when demand at a site is less than the theoretical carrying capacity over a season.
- 7.41. It is important that any overplay of pitches is considered as part of the overall supply and demand analysis for grass wickets, therefore Table 67 identifies overplay or spare capacity at all sites.

## Redditch Borough Council

### Playing Pitch Strategy – Stage C Assessment

- 7.42. As there were no junior wickets identified in the study area, the total demand including adult and junior play has been taken into consideration rather than differentiating between the two age categories.

**Table 67: Current Position for Cricket in Redditch**

Playing Pitch Sites	Squares	Quality of Provision*	Grass Wickets	Grass Supply (MPS)	Grass Demand	Grass Balance (MPS)	NTP Wickets	NTP Supply (MPS)	NTP Demand	NTP Balance (MPS)	Total Balance
Astwood Bank	1	Good	10	50	100	-50	0	0	0	0	-50
Birchensale Middle School	1	Poor	0	0	0	0	1	0	0	0	0
Feckenham CC	1	Standard	20	80	80	0	0	0	0	0	0
Redditch Cricket, Hockey and Rugby Club	1	Good	18	90	55	35	0	0	0	0	35
Ridgeway Academy	1	Poor	0	0	0	0	1	0	0	0	0
St Bede's Middle School	1	Poor	0	0	0	0	1	0	0	0	0
<b>Total Redditch</b>			<b>48</b>	<b>220</b>	<b>235</b>	<b>-15</b>	<b>3</b>	<b>0</b>	<b>0</b>	<b>0</b>	<b>-15</b>

*\*Where a site has multiple squares, the different quality scores of the individual squares are identified*

**Table 68: Potential Spare Capacity for Cricket in Redditch**

Playing Pitch Sites	Total Balance	Potential spare capacity for senior cricket Saturday	Potential spare capacity for senior cricket Sunday	Potential spare capacity for junior cricket midweek
Astwood Bank	-50	No	No	No
Birchensale Middle School	0	No	No	No
Feckenham CC	0	No	No	No
Redditch Cricket, Hockey and Rugby Club	35	No	No	Yes

## Redditch Borough Council

### *Playing Pitch Strategy – Stage C Assessment*

Playing Pitch Sites	Total Balance	Potential spare capacity for senior cricket Saturday	Potential spare capacity for senior cricket Sunday	Potential spare capacity for junior cricket midweek
Ridgeway Academy	0	No	No	No
St Bede's Middle School	0	No	No	No

- 7.43. Table 68 shows the supply and demand balance of all cricket sites across the Study Area. Feckenham CC played 80 games on their grass wickets in the 2021 season, leaving them at a neutral supply and demand position. Redditch Cricket, Hockey and Rugby Club has a current spare capacity of 35 MPS. Astwood Bank is the only site with any current shortfall, with -50 MPS. This is mainly due to the larger number of teams affiliated to the club, in particular the junior section that also use the adult wicket.
- 7.44. Astwood Bank CC also have use of another site outside of the study area in Wychavon District Council area, where they played 20 matches during the 2021 season. The club currently hire Hanbury Recreation Ground and Pavilion from Hanbury Parish Council. Redditch Encato utilise Studley Sports and Social Club in Stratford-upon-Avon. In the 2021 season, they played 20 games at the site. Feckenham CC also have a 2<sup>nd</sup> site at Studley High School in Stratford-upon-Avon. They utilised the NTP wicket for 12 fixtures during the 2021 season. None of this exported demand has been considered in [Table 68](#).
- 7.45. It is unclear whether there is any security of tenure on the sites catering for exported demand. It is therefore important that future facility planning allows club to utilise an adequate quantity of provision to ensure that existing facilities are not subject to further overplay.
- 7.46. There is currently only demand for the one of the artificial wickets at education sites, which is Studley High School. This site catered for 12 of Redditch CC's matches during the 2021 season. The remaining education sites are all rated as poor quality and therefore cannot be assigned any capacity, although they may cater for curricular and extra-curricular use. Therefore, they have been given a neutral balance.
- 7.47. Table 69 highlights where there is potential spare capacity for cricket activity in Redditch. Although some sites have spare capacity as they cater for less MPS than the wicket quality allows, due to the number of matches taking place, spare capacity at peak times is actually significantly reduced. Based on club consultation and match play timings, there is no spare capacity on either Saturdays or Sundays for senior cricket in the study area. However, there is the potential to offer additional mid-week junior sessions at Redditch Cricket, Hockey and Rugby Club.

# Redditch Borough Council

## Playing Pitch Strategy – Stage C Assessment

### Site by Site Analysis

7.48. To ensure that the PPOSS can be seen as a robust evidence base, the site-by-site assessment below includes all cricket site that have been included within the study, as well as the key issues that have been identified through consultation and site assessments. Additionally, this table serves to summarise the key parts of the PPOSS assessment that have been identified so far within this sport specific section, such as community use status, site security and site ownership.

**Table 69: Site by Site Summary for Cricket Provision in Redditch**

Site	Squares	Community Use	Secured Community Use	Ownership	Capacity Analysis (Grass Wickets)	Capacity Analysis (Artificial Wickets)	Site Summary
Astwood Bank	1	Available	Yes	Sports Club	-50	0	The site consists of 10 good quality grass wickets, a 4-bay net facility and good pavilion and net facilities. Astwood Bank CC also currently use another wicket in a nearby village, however they have aspirations to purchase or lease and adjoining field to increase the cricket provision at the main site.
Birchensale Middle School	1	Unavailable	No	Education	0	0	One poor quality artificial wicket on an education site. Currently only used for curricular and extra-curricular provision.
Feckenham CC	1	Available	Yes	Sports Club	0	0	The site has 20 standard quality grass wickets and three moveable practice nets. There is one artificial wicket, however this is used for practice only and does not facilitate any match play provision due to its poor quality. Through consultation with the club, it is apparent that the ancillary facilities are no longer fit for purpose and the pavilion may require a rebuild. The club also aspire to develop a 2 lane, permanent artificial net facility.
Redditch Cricket, Hockey and Rugby Club	1	Available	Yes	Sports Club	55	0	Large multi-sport site shared with hockey and rugby union. The 18 grass wickets are of very good quality and clearly well maintained. The pavilion and all other infrastructure are good. Redditch Entaco CC stated in consultation that they would like to acquire a further set of side screens.

## Redditch Borough Council

### *Playing Pitch Strategy – Stage C Assessment*

Site	Squares	Community Use	Secured Community Use	Ownership	Capacity Analysis (Grass Wickets)	Capacity Analysis (Artificial Wickets)	Site Summary
Ridgeway Academy	1	Unavailable	No	Education	0	0	One poor quality artificial wicket on an education site. Currently only used for curricular and extra-curricular provision.
St Bede's Middle School	1	Unavailable	No	Education	0	0	One poor quality artificial wicket on an education site. Currently only used for curricular and extra-curricular provision.

### Current and Future Position for Grass Pitches

#### Understanding the Process and Key Terminology

- 7.49. The previous section and table provide an analysis over a weekly period of the balance between supply and demand for each adult and junior cricket squares across all sites, as well as identifying the key issues and users for each site.
- 7.50. To provide a clear idea of the current position for cricket provision in the study area, Table 70 below shows the balance between supply and demand for Redditch as a whole. The information gathered in the earlier stages of the project is used to present the current supply and demand position for each pitch typology. The current position is then used to look at the likely future position by incorporating latent/unmet, displaced and future demand.
- 7.51. The points below provide further explanation on the terms used within the tables:
- **Site capacity:** The amount of capacity from all pitches quantified in Matches Per Season (MPS)
  - **Current demand:** The total amount of demand for cricket sites in the area, expressed in matches per season (MPS)
  - **Current position:** The supply and demand position for grass wickets, when taking into consideration the extent of spare capacity and then deducting the amount of overplay
  - **Future demand:** Additional demand that is projected to be realised over the lifetime of the Local Plan, consisting unmet/latent demand, displaced demand and future population growth. Each adult team is presumed to play 10 home games per season, whilst juniors will play 8.
  - **Population growth demand:** Additional demand that is created by a projected increase in the area's population over the lifespan of the local plan. This is calculated using Team Generation Rates (TGRs)

## Redditch Borough Council

### *Playing Pitch Strategy – Stage C Assessment*

- **Unmet/latent demand:** Potential demand that has been identified as not being converted yet. For more information see the latent and unmet demand sections of this needs assessment
- **Displaced demand:** Demand that cannot be satisfied within the local authority, due to a lack of suitable facilities
- **Future position: The projected supply and demand analysis for 2040, using the current position and taking into consideration the additional demand from unmet, latent, displaced and future (population growth) demand. ECB guidance suggests that adult teams will play 10 home matches per season and junior teams 8 home matches per season.** These figures have therefore been utilised to calculate the future demand for pitch provision.

7.52. The following analysis provides a total supply and demand calculation which includes both adult and junior participation. This has not been separated due to the fact there are no junior wickets identified in Redditch.

7.53. It must be noted that the only increase in future demand in Redditch is predicted to come from latent demand. However, this latent demand can only be identified through club consultations and clubs may often fail to turn this into actual demand.

### Total Wicket Analysis

**Table 70: Current and Future Position for Adult Wickets**

Analysis Area	Site capacity	Current demand	Current position	Total Future demand	Future position
Redditch	220	235	-15	279	-59

7.54. Table 70 illustrates that there is currently a shortfall of -15 MPS for grass wickets in Redditch. This calculation considers all grass and artificial wickets in the area, although there all NTPs are of poor quality so offer no supply and there is no demand for them.

7.55. It must be noted however that Astwood Bank CC played 20 fixtures outside of Redditch in the 2021 season. If this displaced demand took place at Astwood Bank, the current position would be worsened to a deficit of -35 MPS. Although the other clubs also have some exported demand, they did not highlight a desire to relocate this back within Redditch.

7.56. When future demand by 2040 is taken into account, it is predicted that the shortfall of grass wickets will increase to -59 MPS. However, if the displaced demand of Astwood Bank CC is considered, then cricket provision in Redditch would be in a deficit of -79 MPS by 2040.

# Redditch Borough Council

## *Playing Pitch Strategy – Stage C Assessment*

### Cricket summary

- 7.57. This section summarises the findings from the cricket analysis, which will form the basis of the recommendation and action plan section for Redditch
- 7.58. Table 71 includes the response to 5 key questions which are identified in the Sport England PPOSS Guidance Checklists. Using these key questions to summarise the findings of each of the sport chapter creates consistency, not only within the report but with similar PPOSS projects in neighbouring local authorities and further afield.

**Table 71: Key PPOSS Findings for Cricket in Redditch**

Key Question	Analysis
<b>What are the main characteristics of the current supply and demand for provision?</b>	<p>There is a total of 6 pitches in Redditch, comprising of 48 grass wickets and 3 artificial wickets.</p> <p>Of the 3 artificial wickets, none are accessible by the community.</p> <p>There are no local authority owned cricket sites in Redditch. Of the 6 sites, 3 are owned by sports clubs and 3 education establishments.</p> <p>There are currently 3 cricket clubs in Redditch, with a total of 39 teams. This total comprises of 12 senior male, 5 senior female and 22 junior teams.</p>
<b>Is there enough accessible community use provision to meet current demand?</b>	<p>There is a current shortfall of -15 MPS in Redditch. However, there is 20 MPS of displaced demand from Astwood Bank CC, which would increase the shortfall further to -35 MPS if they were forced to relocate.</p> <p>Astwood Bank is the only site that is currently over played (-50 MPS). Redditch Cricket, Hockey and Rugby Club has a current spare capacity of 35 MPS; Feckenham CC has 0 MPS of spare capacity.</p>
<b>Is the provision that is accessible of sufficient quality and appropriately maintained?</b>	<p>All grass wicket provision is of a good or standard quality in Redditch. All other artificial wickets are on education sites and are of poor quality and cater only for curricular use.</p>
<b>What are the main characteristics of the future supply and demand for provision?</b>	<p>There is predicted to be an additional 2 senior teams and 3 junior teams in Redditch by 2040 as a result of the growth of women and girls cricket and latent demand from clubs.</p> <p>Astwood Bank expressed their aspirations to develop another cricket pitch adjacent to their current facility. If this was to occur, the supply of cricket in Redditch would increase, and could cater for the club's current displaced demand.</p>
<b>Is there enough accessible community use provision to meet future demand?</b>	<p>The future analysis shows that there is predicted to be a deficit of -59 MPS by 2040. However, this does not take into consideration the displaced demand from Astwood Bank CC. If this was considered, then cricket supply and demand in Redditch have a shortfall of -79 MPS on grass wickets by 2040.</p>

## 8. Tennis Analysis

### Introduction and Strategic Context

- 8.1. The Lawn Tennis Association (LTA) is the organisation responsible for the governance of tennis. The Herefordshire and Worcestershire LTA is responsible locally for the sport in terms of county teams and county-based initiatives in Redditch. The following section provides greater detail of the existing strategies and national facility plans that are currently being delivered by the LTA.
- 8.2. Following this, the supply and demand section of this report evaluates the adequacy of facilities for tennis and considers:
- The supply of courts and demand for these;
  - The quality of courts in Redditch; and

### Recommendations moving forward

#### Tennis Opened Up 2019-2023

- 8.3. The LTA has recently produced a new strategy which outlines the strategic priorities for the future of the sport.
- 8.4. The overriding mission statement of the strategy is “to grow tennis by making it more relevant, accessible, welcoming and enjoyable.”
- 8.5. To help with delivering on this mission statement, four pillars have been identified to provide focus for improvement. These are:
- **Relevant:** Tennis is seen as traditional, old-fashioned and reserved. To succeed it needs to be seen as modern, fresh and exciting;
  - **Accessible:** Tennis needs to be seen as an easy sport for people to engage with. The process must be frictionless and available when people want it;
  - **Welcoming:** Tennis is perceived as inward looking, elitist, and socially and technically intimidating. This image must be broken down; everyone is welcome in the tennis family whatever their age, ability or social background; and
  - **Enjoyable:** Tennis is viewed as a tough sport requiring commitment, dedication and a lot of hard work but it doesn't have to be this way. The social side, the different formats and the exhilaration of playing are richly rewarding and hugely positive.
- 8.6. To translate the strategic vision into a reality the LTA has produced a programme of action that is based on 7 core strategies. These are:

---

## Redditch Borough Council

### *Playing Pitch Strategy – Stage C Assessment*

---

1. **Visibility:** Broaden relevance and increase visibility of tennis all year round to build engagement and participation with fans and players;
  2. **Innovation:** Innovate in the delivery of tennis to widen its appeal;
  3. **Investment:** Support community facilities and schools to increase the opportunity to play;
  4. **Accessibility:** Make the customer journey to playing tennis easier and more accessible for anyone;
  5. **Engagement:** Engage and collaborate with everyone involved in delivering tennis in Britain, particularly coaches and volunteers, to attract and maintain more people in the game;
  6. **Performance:** Create a pathway for British champions that nurtures a diverse team of players, people and leaders; and
  7. **Leadership:** Lead tennis in Britain to the highest standard so it is a safe, welcoming, well-run sport.
- 8.7. The Sport England Active Lives Survey confirms the seasonal participation peaks in the summer. This is particularly pronounced amongst non-club and occasional players.
- 8.8. It is key to note that the correlation between the lack of ‘community’ tennis in the non-summer months is likely to be heavily influenced by the lack of floodlighting, which is often a characteristic of local authority owned courts.
- 8.9. Further research carried out by the LTA suggests that many more people would play tennis if they knew where courts were located, particularly local authority courts. Its assertion is that better promotion would increase conversion of latent demand.
- 8.10. Technology development is evolving, and it is now possible for an access gate to be connected to the internet via 3G / Wi-Fi. The keypad can be used to open the gate with a code, automatically generated by the LTA online booking system ‘clubspark’. Courts can be booked via mobile phone tablets and laptop / desktop. The booking system manages payments for the courts alongside a number of other customer relationship features.
- 8.11. It is hoped that increasing the awareness, the ease of bookings and the security of facilities from petty crime and vandalism will increase the conversion of latent demand to actual demand across the country. The LTA are therefore keen to work with local authorities, especially those in areas of high population, to deliver fit-for-purpose projects at sites with community access.

## Redditch Borough Council

### Playing Pitch Strategy – Stage C Assessment

#### Supply

- 8.12. The following table 72 provides a breakdown of tennis courts in the area (please note that this table refers to courts and not sites). The quality rating of a site is calculated using the following LTA criteria:

**Table 72: LTA Quality Rating Criteria**

Poor:	Standard:	Good:
Playing surface poor, slippery playing surface, poor drainage, cracks on the playing surface and surrounding area, court markings hardly visible, no nets or nets damaged, surrounding fencing poor/dangerous.	Court colour is fading or showing signs of wear. The surface remains largely intact. The court life, prior to needing resurfacing, would be extended for up to 5 years by cleaning and repainting of the existing surface.	Good playing surface, courts recently been upgraded, resurfaced, nets and fencing in working order

- 8.13. Table 72 shows there are 19 outdoor courts across 7 sites in Redditch. Out of these courts, 9 (47%) are of good quality, with 6 (31%) being of standard quality and 4 (21%) being poor. There is no floodlit provision in Redditch. All tennis sites in Redditch are considered to be available to the community, however only 2 of the 7 sites provide secured community use.
- 8.14. The following table 73 provides a breakdown of tennis courts in the Study Area.

**Table 73: Outdoor Tennis Provision by Site**

Site Name	Postcode	Community Use	Security of Community Use	Ownership	Management	Number of Courts	Surface	Floodlit	Site Quality
Arrow Vale Sports Centre	B98 0EN	Available	Unsecure	Education	Education	6	Tarmac	3	Poor
Redditch Borough Community Sports and Social Club	B97 6PB	Available	Secure	Sports Club	Sports Club	6	Macadam	4	Good
St Augustine's Catholic School	B97 5LX	Unavailable	Unsecure	Education	Education	4	Tarmac	0	Poor
Tudor Grange Academy	B98 7UH	Available	Unsecure	Education	Education	6	Tarmac	0	Standard

## Redditch Borough Council

### Playing Pitch Strategy – Stage C Assessment

**Table 74: Outdoor Tennis Ancillary Provision by Site**

Site Name	Postcode	Overmarked?	Ancillary Facilities
Arrow Vale Sports Centre	B98 0EN	No	Standard – school changing
Redditch Borough Community Sports and Social Club	B97 6PB	No	Good – extensive clubhouse with large bar and kitchen area, numerous changing rooms and other high quality amenities.
St Augustine’s Catholic School	B97 5LX	Yes - netball	Standard – school changing
Tudor Grange Academy	B98 7UH	Yes - netball	Standard – school changing

8.15. Provisional findings from the supply-side analysis indicate:

- 18 out of 22 courts are available to public, but only 33% of these provide secured community use.
- 1 out of 4 sites is rated as good quality, making up 27% of the total supply of courts.
- There are 7 floodlit courts in Redditch.

8.16. Table 75 summarises the key tennis sites in Redditch.

**Table 75: Key Site Summaries**

Site Name	Consultation Summary
Arrow Vale Sports Centre	An education site with very poor-quality tennis provision. 6 tarmac courts with very faded lines and overlaid with netball. 3 of the 6 courts are floodlit, and with only 3 bulbs out of 12 working, the site is not considered playable. The 3 courts with floodlights are used as an overspill carpark at busy times, preventing any community use. Although in a poor state of repair, the site is available to the community for use at certain times. The school use the courts for curriculum tennis programmes. The venue is currently hosting Redditch Tennis Club (RTC) on a temporary basis (pro-bono) with the Club having been evicted from Redditch Borough Sports and Social Club site by the lease holder (long-term future unconfirmed). This site is under consideration by Redditch Tennis Club TC for future relocation (amongst others). For clarity, RTC has no viable relocation plans have been established to date. If there were plans to redevelop the courts, the LTA would support the principle of blended ‘pay & play’ offers with club membership packages and suggest that the implementation of ‘smart access technology would encourage ease of access for the community.
Redditch Borough Community Sports and Social Club	Excellent quality tennis provision on a large multi-sport site. There are 6 macadam with good netting, fencing and line markings, four of which are floodlit. The site is clearly well maintained with ample parking. Bowls and football provision also on site. The site has been home to Redditch Tennis Club (RTC) for over 40 years and has been an LTA registered club for the same period. RTC has an extensive community programme, excellent player pathways and is an exemplar club. RTC has aspirations to resurface the courts to further support the player pathway. RTC have been successful in with a Crowd Funder and Sport England grant application to upgrade the courts.

## Redditch Borough Council

### *Playing Pitch Strategy – Stage C Assessment*

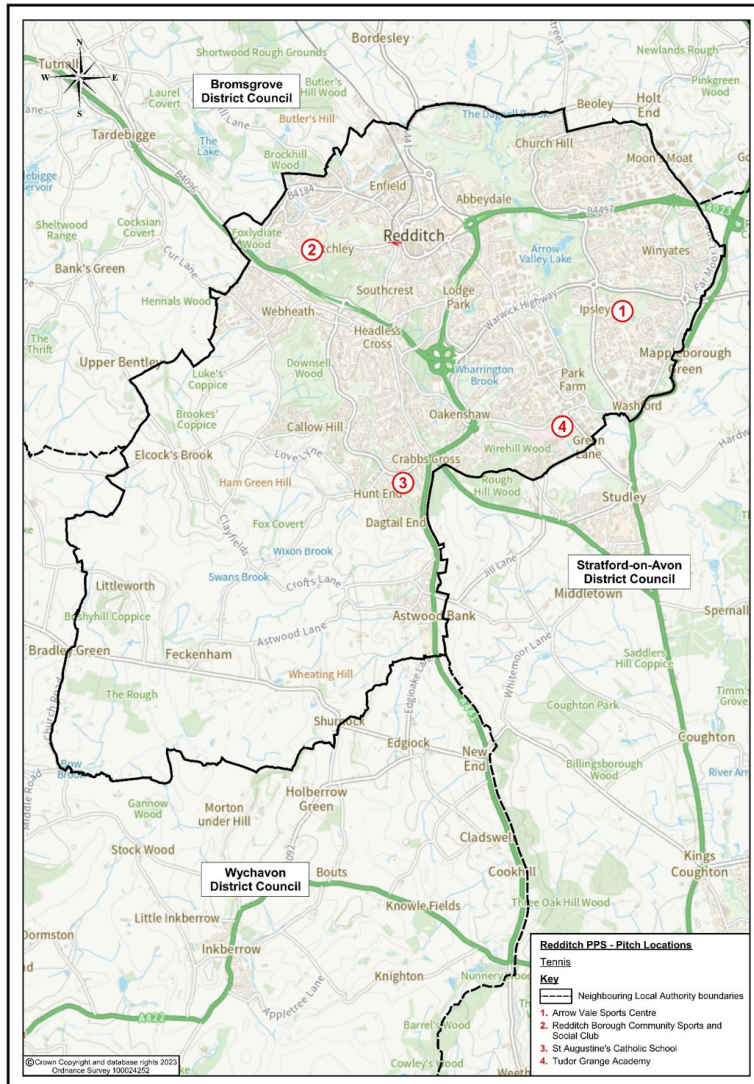
Site Name	Consultation Summary
	At this moment in time, RTC is experiencing challenging times for their future sustainability at Redditch Borough Sports and Social Club. RTC was evicted from this site by their lease holder in August 2023 (Redditch Borough Football Club - RBFC) as a result of disputes regarding the lease. RBFC hold the 30 lease, offered by METTIS the free holder. The site remains locked and tennis is not open for business. The lease holder is considering the formation of a new 'Redditch Borough Tennis Club' at the site from October 2023. At the time of writing, the dispute between RBFC and RTC remains unresolved, which has left RTC with the reality of having to scope out future relocation projects. This has critical implications for imbalances in tennis demand because RTC is the only club in the Borough and a potential 279 RTC members may be displaced,.
St Augustine's Catholic School	Four poor quality tarmac courts on an education site. Poor line markings and fencing. There is currently no community use of the site, however the LTA have highlighted their interest in developing community access to the site.
Tudor Grange Academy	Six tarmac courts, overlaid with netball and a large multi-sport school site. None of the courts are floodlit. There are aspirations to refurbish the indoor facilities at the site, as well as develop a 3G pitch. The site is eager to encourage community access and is working alongside the LTA and Inspire2coach to support this. A new coaching programme has been launched by Inspire2Coach, and TGA Trust is working with the LTA on developing a pilot project for teacher training across the whole MAT (13 schools). The site has the aspiration to cover 3 outdoor courts with a tennis air hall / bubble. This site is under consideration by Redditch Tennis Club (amongst others), who have been evicted from Redditch Borough Sports and Social Club. For clarity, no viable relocation plans have been established to date. If there were plans to redevelop the courts, the LTA would support the principle of blended 'pay & pay' offers with club membership packages and suggest that the implementation of 'smart access technology would encourage ease of access for the community.

8.17. Map 7 shows the geographic location of outdoor tennis courts across the Study Area and presents the dispersion courts across Redditch.

# Redditch Borough Council

## Playing Pitch Strategy – Stage C Assessment

Map 7: Outdoor Tennis Courts across Redditch



### Demand

8.18. This section of the analysis examines the demand for tennis in Redditch.

### Active Lives Survey

8.19. As per the LTA's insight as captured at the start of this chapter, demand for tennis is comprised of members and more 'casual' or 'recreational' players. These 'casual' or 'recreational' players are usually defined by a lack of membership to a tennis club and typically access facilities through public park courts and other publicly available facilities.

8.20. Sport England's Active Lives Survey represents the most robust dataset regarding participation in sport in England amongst those aged 16 or older. The latest iteration of this data is taken from surveys carried out in November 2020/21. Data was not available for Redditch specific information, so the data is taken for the whole of the Herefordshire and Worcestershire Active Partnership area (HWAP) The data shows the following:

- 1.3% of residents aged 16+ in the HWAP reported playing tennis twice within the last 28 days (survey carried out in November 2021).
- The 1.3% 'twice-monthly' participation rate for HWAP was comparable to the national equivalent participation rate of 1.4%.
- 3.6% of residents aged 16+ in the HWAP area reported playing tennis at least once in year 20/21, which can be compared to a national average of 5.1%.

8.21. According to the population figures used throughout this report, there are 68,295 residents in Redditch aged 16 or over. Although the 1.3% participation rate used in the Active Lives Survey considers the HWAP area as a whole, we can assume this is also relevant for Redditch. This means that when translated into demand, the Active Lives Figures show that 888 people play tennis at least twice every 28 days and 2,459 play at least once per year. These figures can be taken forward to analysis the utilisation the court capacity in Redditch.

### Membership Data

8.22. Consultations undertaken with clubs in Redditch have been used to capture membership and other information. The membership figures for each club are displayed in Table 76.

## Redditch Borough Council

### *Playing Pitch Strategy – Stage C Assessment*

**Table 76: Tennis Club Membership in Redditch**

Club Name	Site	Current Membership
Redditch Tennis Club	Redditch Borough Community Sports and Social Club	279
<b>Total</b>		<b>279</b>

- 8.23. Table 76 shows that there is one club in Redditch with a membership of 279 people. As a percentage of residents in Redditch aged 16+, 0.4% are member of a tennis club. As a percentage of the 888 people who play at least twice every 28 days, tennis club members make up 31.4% of this demand.

### Future Demand

- 8.24. Future population figures provided by Redditch Borough Council will be used to model future demand for tennis. There will be a predicted 0.77% increase in the population across Redditch by 2040. See Table 77 for details.

**Table 77: Future Population Projections**

Current 16+ Population	Future 16+ Population 2038
68,295	68,821

- 8.25. Should participation and club memberships grow in-line with the population increase there will be around 0.77% more players in the future. This is broken down in further detail in Table 78.

**Table 78: Future Demand Estimates**

Participant Category	Current	Future Projection
Club Members	279	281
Non-club players (at least once annually)	2,459	2,478
<b>Total Participants</b>	<b>2,738</b>	<b>2,759</b>

- 8.26. Table 78 shows the population driven growth in demand for tennis in Redditch. However, this demand should be factored into the overall growth trends driven by the LTA's activity and participation programmes.

### Supply and Demand Balance

8.27. This section of the report will draw together the supply and demand data presented above to show the current and projected capacity balances for tennis in Redditch.

### Club Balance

8.28. Table 79 summarises the current utilisation of each community club in Redditch. If a court is floodlit it has a membership capacity of 60, compared with a membership capacity of 40 if non-floodlit. Although these are the figures that will be used to conduct the supply and demand analysis, clubs may be able to operate at a higher capacity. Therefore, they should not be considered to be the absolute threshold.

**Table 79: Current and Projected Utilisation of Tennis Club Courts in Redditch**

Club	Capacity (membership)	Members	% Utilisation	Projected Members (2038)	Projected % Utilisation
Redditch Tennis Club	320	279	87%	281	88%

8.29. Table 79 shows that Redditch Tennis Club is currently operating at 87% of their estimated operational capacity and are therefore able to meet the level of membership demand.

8.30. The club have a spare capacity of 41 members.

8.31. Due to the small projected population growth in Redditch by 2040, the club will still only be working at an 88% capacity.

### Public Courts

8.32. This section summarises the current supply and demand balance of public (non-club) courts in Redditch. Only courts accessible on a free-to-access or pay-and-play basis can be considered as 'public courts'.

8.33. The LTA advises that the capacity of public courts to be 7 hours per day for non-floodlit courts and 12 hours per day for floodlit courts. This equates to 2,555 hours per year on non-floodlit courts and 4,380 hours per year on floodlit courts.

8.34. Those sites deemed to be publicly accessible in this fashion are: Arrow Vale and Tudor Grange Academy.

---

## Redditch Borough Council

### *Playing Pitch Strategy – Stage C Assessment*

---

- 8.35. It is estimated that these sites contribute 693 hours per week of playing capacity to meet demand for informal tennis in Redditch. This equates to 2,970 hours per month (30-day average) or 36,135 hours per year.
- 8.36. 888 people participate in tennis activity at least twice every 28 days. Of this number we can presume that 31.4% are members of a club, leaving 609 non-members that have a demand to access tennis courts twice per month.
- 8.37. Assuming an average of 3 people per court per 'booking / use' (to account for an even split between singles, doubles and some sessions where 3 people share a court) this equates to 406 sessions per month played on public courts. If each match lasts for 1 hour on average this means that public courts are operating at 13.6% of their total operational capacity.
- 8.38. According to data provided by the LTA's online booking system (Clubspark) with court access technology, the average level of utilisation in venues (UK wide) is 53%. By this barometer Redditch is operating significantly below average level in terms of its utilisation of public courts.
- 8.39. If demand for courts increases in line with population, there will be an estimated 409 sessions per month on public courts by 2040. This would equate to 13.8% of existing public court capacity. This means that public tennis courts in Redditch would still be operating well below current average utilisation according to the LTA's 2019 benchmarking.
- 8.40. However, it must be noted that although these calculations and predictions are necessary, we know through consultation with schools and the LTA, that Arrow Vale and Tudor Grange Academy are not currently used by the community. We can therefore presume that all informal demand for Tennis in Redditch is being met by tennis provision outside of the area.
- 8.41. A key LTA priority in Redditch is to increase the visibility of public courts. By utilising Club Spark and making courts available to be booked online, the LTA hope to increase tennis participation on these sites and gain a greater understanding of community use in the area. The LTA are also aiming to drive community participation, by developing coaching programmes in Redditch.
- 8.1 However, the LTA Parks investment strategy is focused on investing in and improving park sites, meaning that Redditch Borough Council are unable to unlock and maximise the opportunity for grant funding as a result of the shortfall in park sites for tennis. The investment strategy attempts to make it easier for people to find and book public courts through LTA **Online Booking**. The lack of park sites in the area means that free and affordable tennis is not accessible through digital booking platforms to many in Redditch.

### Tennis Summary

- 8.42. This section summarises the findings from the tennis analysis, which will form basis of the recommendation and action plan section for Redditch.

## Redditch Borough Council

### Playing Pitch Strategy – Stage C Assessment

- 8.43. Table 80 includes the response to key questions, which are asked for all PPOSS studies across the UK, in order to provide a standardised illustration of supply and demand for sports provision.

**Table 80: Key PPOSS Findings for Tennis in Redditch**

Key Question	Analysis
<b>What are the main characteristics of the current supply and demand for provision?</b>	<p>There are 4 sites that have tennis provision, three of which are educational sites and one sports club, with a total of 22 courts. 18 of these courts are available for community use. 7 of the courts are floodlit.</p> <p>There is one tennis club in the area, which is Redditch Tennis Club (RTC). The club has 279 members and is located at Redditch Borough Community Sports and Social Club. RTC is experiencing challenging times for their future sustainability at Redditch Borough Community Sports and Social Club. RTC have been evicted from this site by their lease holder in August 2023 (Redditch Borough Football Club - RBFC) as a result of disputes regarding the lease. RBFC hold the 30 lease, offered by METTIS the free holder. The site remains locked and tennis is not open for business. The lease holder is considering the formation of a new 'Redditch Borough Tennis Club' at the site from October 2023. At the time of writing, the dispute between RBFC and RTC remains unresolved, which has left RTC with the reality of having to scope out future relocation projects. This has critical implications for imbalances in tennis demand because RTC is the only club in the Borough and a potential 279 RTC players may be displaced. Arrow Vale is currently hosting Redditch Tennis Club (RTC) on a temporary basis (pro-bono) with the Club having been evicted from Redditch Borough Community Sports and Social Club. The Arrow Vale courts are considered unplayable, but the venue have stepped in to support RTC members to be able to play tennis, whilst being locked out of their courts. The other sites currently do not host any community tennis activity, although the some are trying to develop this alongside the LTA.</p>
<b>Is there enough accessible and secured community use provision to meet current demand?</b>	<p>Based on the calculations above, if existing provision was catering for informal demand in Redditch, it would be working at a 13.6% capacity. However, it is believed that this demand is being met outside of the area, due to the poor quality and inaccessibility of courts in Redditch.</p> <p>Redditch Tennis Club had an 87% utilisation rate, meaning there is capacity for another 41 members. However, the Club courts have been closed for business until further notice. This means 279 members have been displaced and do not have a suitable venue to play at within the Borough.</p>
<b>Is the provision that is accessible of sufficient quality and appropriately maintained?</b>	<p>27% of courts in Redditch are rated good quality, however these are all located at Redditch Borough Sports and Social Club, and these courts are now closed for business. 45% are rated as poor quality, although the courts at Arrow Vale Sports Centre have been highlighted as a priority for redevelopment by the school and are one of various venues (amongst others) being considered by Redditch tennis Club for relocation.</p>
<b>What are the main characteristics of the future supply and demand for provision?</b>	<p>Due to the small population growth that is predicted in Redditch, Redditch Tennis Club will still only be at 88% capacity by 2040. Publicly accessible courts would also still be operating well below national averages, at 13.8% capacity. However, as mentioned above, it is likely that this demand is being met by provision outside of Redditch.</p> <p>There are aspirations to improve the existing tennis court stock, particularly at Arrow Vale Sports Centre and Tudor Grange Academy.</p>

---

## Redditch Borough Council

### *Playing Pitch Strategy – Stage C Assessment*

---

Key Question	Analysis
	<p>The LTA have highlighted their desire to improve the ease of accessibility to these courts through the clubspark programme and support development of these facilities. The LTA would support the principle of blended 'pay &amp; pay' offers with club membership packages and suggest that the implementation of 'smart access technology would encourage ease of access for the community.</p>
<b>Is there enough accessible and secured community use provision to meet future demand?</b>	<p>Even when considering population growth to 2040, there is expected to be enough secured community use provision to meet future demand. The caveat being, that the courts located at Redditch Borough Sports and Social Club were closed for business in August 2023 and remain so to date. If the courts remained closed it will cause critical imbalances to supply and demand. There is an aspiration to reopen the courts in October 2023, although it is unknown if this is a viable prospect.</p> <p>To summarise, if these courts reopen, there is enough capacity to meet demand both currently and in the future. If the courts do not reopen, there is a significant undersupply of tennis provision within Redditch and this will remain so unless there is reopening or development.</p>

## 9. Netball Analysis

### Introduction and Strategic Context

- 9.1. This section provides greater detail of the existing strategies that are currently being delivered by Netball England. Following this, the supply and demand section of this report evaluates the adequacy of facilities for netball and considers:
- The supply of courts and demand for these;
  - The quality of courts in Redditch;
  - Recommendations moving forward.
- 9.2. Netball in England is administered by Netball England, the national governing body for the sport. The current strategy forms the fundamental principles for its strategic planning for the future of sport and business.

### Vision, Mission and Values

- 9.3. The 10-1-1 policy refers to 3 key targets for the sport:
1. Aspire to establish netball as a top 10 participation sport in England;
  2. Aspire to establish netball as the first-choice team sport for women and girls; and
  3. Aspire to achieve and maintain Number 1 World ranking status.

### Strategic Goals

- 9.4. In achieving these 3 central aspirations, England Netball has established 4 strategic goals:
1. Grow Participation in the netball by an average of 10,000 participants per year;
  2. Deliver a 1st class member and participant experience;
  3. Establish the national team as number 1 in the world by winning the World Netball Championships; and
  4. Lead an effective and progressive infrastructure enabling all involved in the netball experience to collaborate as one team aligned behind one dream.

### Guiding Principles

9.5. Finally, Netball England has identified 9 guiding principles to help shape decision making within the organisation:

1. We are a customer-focused sport business. We will always place the participant at the heart of everything we do and provide the best quality service we can but we will balance that with the need to grow and manage a sustainable business;
2. We will value and respect the contribution and needs of our volunteer workforce who are integral to our success;
3. We will centrally coordinate and locally deliver our portfolio of programmes and products targeting resources at the point of need (one size does not fit all), by ensuring pathways are integrated and securing a return to on our investment (financially or socially) creating capacity to reinvest in the business and deliver long-term sustainability;
4. We will be innovative and progressive in our thinking, always connecting short-term actions to medium-term strategies and long-term goals, while striving to improve the quality and standard of what we do and how we do it;
5. We will work as ‘one team aligned to one dream’ for the benefit of netball in England and as such we will succeed or fail together;
6. We will work in partnership and collaboration where there is a mutual benefit in terms of operational effectiveness and efficiency, value for money and added value for participants in netball;
7. We will develop, enable and encourage programmes and activities that have a positive and beneficial impact on the lives of netball participants;
8. We will establish integrated planning and process pathways that enable rather than constrain service excellence, making England Netball easy to do business with and add value to the participant; and
9. We will recognise and celebrate individual and collective contributions and success.

### Delivery Methods

9.6. In order to deliver the strategic goals of netball, Netball England has established multiple participation programmes. These programmes are detailed below:

- Traditional 7-a-side: 7 aside is the longstanding format of the game that most girls are introduced to at school. The game is played to a professional level as part of the Netball Super league to regional amateur leagues around the country;

## Redditch Borough Council

### *Playing Pitch Strategy – Stage C Assessment*

- Back to Netball: A key participation programme for netball, Back to Netball sessions are run nationally with the intention of reintroducing women back into the sport. Netball England report that over 60,000 women have taken part in these sessions since 2010;
- Netball Now: A turn up and play session of netball with an emphasis on low organisation for the player, with no assigned teams or organised leagues. Netball Now is targeted at 16-21year olds and is seen as a partner to the Back to Netball programme;
- I Heart Leagues: Designed to provide a social and gentle introduction into match play. The leagues are designed for players who have participated in the Back to Netball programme or Social Players looking for a weekly, light but competitive game;
- Walking Netball: A slower version of the 7 aside game played only at walking pace. The programme is targeted at older demographics with a key focus on sociability and enjoyment; and
- I Bee Netball: Netball specifically designed for 5-11 year olds.

### Supply

9.7. The following section will detail the supply of outdoor netball facilities in Redditch.

9.8. Table 81 shows the outdoor provision of netball courts in Redditch. There are 3 sites with a total of 12 courts. All courts in Redditch are available for community use.

**Table 81: Outdoor Netball Facilities in Redditch**

Site	Sub Area	Ownership	Management Type	Courts	Surface	Floodlit	Available to community	Overall Rating
Tudor Grange Academy	Redditch	Education	Education	6	Tarmac	No	Available	Standard
Arrow Vale Sports Centre	Redditch	Education	Education	2	Tarmac	No	Available	Standard
St Bede's Catholic Middle School	Redditch	Education	Education	4	Tarmac	No	Available	Standard

9.9. Table 81 shows that there are 12 outdoor netball courts across 4 sites in the Study Area, none of which are floodlit. All of the of sites are education-owned (100%).

9.10. 100% of the 12 courts are of standard quality, with no poor provision in Redditch.

---

## Redditch Borough Council

### *Playing Pitch Strategy – Stage C Assessment*

---

- 9.11. There are no floodlit courts in Redditch. This affects the amount of outdoor netball that can be played, due to darkness in the winter months.
- 9.12. Summaries from the site assessments can be found in Table 82.

**Table 82: Outdoor Netball Facilities in Redditch**

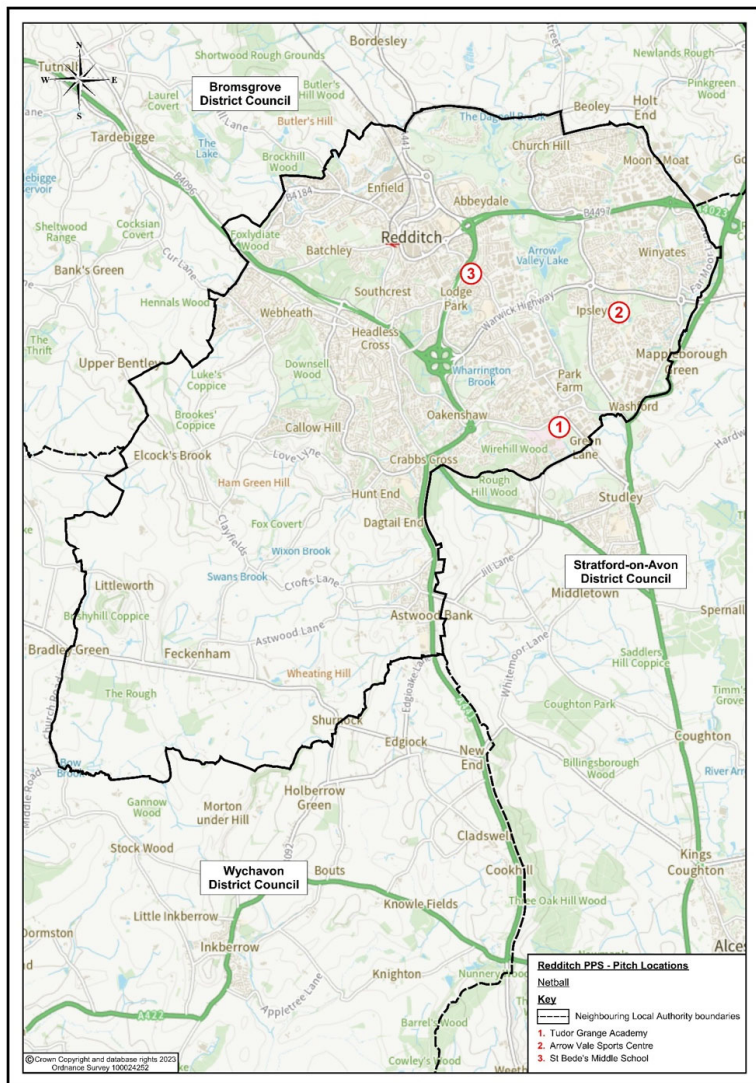
Site	Summary
Tudor Grange Academy	Large multi-sport site for netball and tennis, including 6 netball courts overlaid with tennis markings. The tarmac surface, although in need of remarking, is in good condition. There are also grass pitches on site. The indoor facilities are in need of refurbishment although there is potential to develop these if funding is provided. There are also aspirations to put 3G pitch on site.  The site plays host the Redditch Netball League all year round.
Arrow Vale Sports Centre	Education site, with two standard quality tarmac netball courts. The site is available to the community, and also includes a 3G pitch, and grass provision, as well as indoor facilities.
St Bede's Catholic Middle School	Four standard quality netball courts, with no floodlighting. Recently developed indoor provision is also onsite with large sports hall and grass pitches.

- 9.13. Map 8 shows the geographic location of outdoor netball courts across the Study Area and presents the dispersion courts across Redditch.

# Redditch Borough Council

## Playing Pitch Strategy – Stage C Assessment

Map 8: Outdoor Netball Courts across Redditch



---

## Redditch Borough Council

### *Playing Pitch Strategy – Stage C Assessment*

---

#### Demand

- 9.14. This playing pitch strategy looks only at outdoor sports provision. All indoor provision is assessed as part of a built facilities strategy.
- 9.15. There is a prominent league, Redditch Netball League, that is played at Tudor Grange Academy all year round. This is the only consistent outdoor netball provision that has been identified in the study area.
- 9.16. Redditch Netball League runs both summer and winter leagues. The summer league is played on Monday, Tuesday, Wednesday and Thursday evenings, between April and August. The winter league is run from September to March on Sunday mornings. All matches are played at Tudor Grange Academy.
- 9.17. Table 83 provides an average weekly usage for summer and winter netball at Tudor Grange Academy.

**Table 83: Demand for Netball in Redditch**

League Name	Site Name	Capacity for Netball Courts	Purpose	Weekly Demand
Redditch Netball League Summer (April – August)	Tudor Grange Academy	6 Courts	Competitive League	8 hours average
Redditch Netball League Winter (September – March)	Tudor Grange Academy	6 Courts	Competitive League	2 hours average

- 9.18. During the summer months, there is a demand for 8 hours of competitive netball at Tudor Grange Academy, spread across four nights of the week. From September to March, this demand reduces to 2 hours per week on a Sunday morning. This is due to the lack of floodlit provision in the study area.
- 9.19. Due to the lack of outdoor floodlit facilities, it must be presumed that all training and other competitive netball, takes place indoors during the netball season of September to April.
- 9.20. For the purpose of this study, we will presume an average yearly usage for 5 hours per week.

#### Future Demand

- 9.21. Future demand for outdoor netball is difficult to calculate, as it is generated by the growth of indoor netball, which is not included as part of this PPOSS. Indoor sportshall or activity hall provision is the preferred method of netball delivery and therefore through consultation with Sport England, England Netball and sports clubs, it can be presumed that there is currently no demand for outdoor netball in Redditch.

## Redditch Borough Council

### *Playing Pitch Strategy – Stage C Assessment*

- 9.22. However demand for netball in Redditch is likely to increase after the Commonwealth Games 2022, especially with its close location to the study area. After the 2019 Netball World Cup in Liverpool, there was an increase of over 160,000 people participating in netball. Other programmes and initiative led by England Netball may also lead to an increase in participation.

### Netball Summary

- 9.23. This section summarises the findings from the netball analysis, which will form basis of the recommendation and action plan section for Redditch.
- 9.24. Table 84 includes the response to key questions, which are asked for all PPOSS studies across the UK, in order to provide a standardised illustration of supply and demand for sports provision.

**Table 84: Key PPOSS Findings for Netball in Redditch**

Key Question	Analysis
<b>What are the main characteristics of the current supply and demand for provision?</b>	Education owned sites provide all of provision of outdoor courts in the Study Area, and all are available to the community. Although we can presume most netball provision in the area takes place indoors, Tudor Grange Academy facilitates the Redditch Netball League year round.  There are no floodlit, outdoor netball courts in the study area.
<b>Is there enough accessible and secured community use provision to meet current demand?</b>	None of the outdoor netball provision in Redditch is floodlit. Therefore, we can presume that no training during the winter season can take place outdoors and due to the netball league that takes place year round at Tudor Grange Academy, there is limited spare capacity on outdoor courts in Redditch.  Due to the lack of floodlit courts in the study area, the vast majority of netball activity is on indoor courts. This usage will be considered in the Built Facilities Strategy.
<b>Is the provision that is accessible of sufficient quality and appropriately maintained?</b>	All courts in the study area are rated as standard quality and are maintained and managed by educational sites.
<b>What are the main characteristics of the future supply and demand for provision?</b>	There is currently no increase in future demand for outdoor netball courts in Redditch.

---

Redditch Borough Council  
*Playing Pitch Strategy – Stage C Assessment*

---

**Key Question**

**Is there enough accessible and secured community use provision to meet future demand?**

**Analysis**

Although clubs would prioritise sourcing indoor netball facilities, there is a lack of access for outdoor netball provision that is floodlit. This could help to facilitate winter training and match play when indoor facilities are unavailable.

## 10. Outdoor Bowls Analysis

### Introduction and Strategic Context

- 10.1. Bowls England is responsible for the governance, administration and promotion of Flat Green Lawn Bowls in England. It was formed in 2008 following the unification of the English Bowling Association and the English Women’s Bowling Association.
- 10.2. The following section provides greater detail of the existing strategies that are currently being delivered by Bowls England.
- 10.3. Following this, the supply and demand section of this report evaluates the adequacy of facilities for bowls and considers:
- The supply of facilities and demand for these;
  - The adequacy of facilities in Redditch; and
  - Recommendations moving forwards

### Strategic Plan – Fit for the Future 2021 – 2026

- 10.4. In August 2021 Bowls England launched their new Strategic Plan for the five-year period to 2026, with the aim for reaching 1 million bowls experiences per year. The key priorities to meet this target are:
- Building the brand of bowls – Increasing focus on international and top domestic bowls, and utilising opportunities such as Birmingham 2022 to achieve larger media coverage;
  - Ensuring the sport is truly accessible to all – by offering different formats of the game which suit all time constraints, as well as driving more people to clubs in new ways;
  - Creating positive playing experiences for everyone – whoever steps on the green, both casual and competitive players, as well as growing our events calendar and introducing a performance pathway;
  - Putting volunteers first – as the lifeblood of our sport, by increasing our support for clubs in order to empower them to thrive;

## Redditch Borough Council

### *Playing Pitch Strategy – Stage C Assessment*

- Leading the sport with purpose – by developing our governance structures, diversifying our revenue streams, and working collaboratively with all the sport’s key stakeholder

### Supply

- 10.5. The local authority owns 1 bowls site in Redditch, which it is also responsible for the management of. The remaining bowls provision (5 sites) is owned and managed by bowling clubs themselves, emphasising a lack of dependency upon local authority owned and managed sites. A breakdown of ownership and management can be found in Table 85.

**Table 85: Ownership and Management of Bowls Sites in Redditch**

Type	Ownership	Management
Local Authority	2	1
Sports Club	4	5

- 10.6. Table 85 shows that there are currently 3 bowling greens in Redditch spread across 3 sites.
- 10.7. Of the total number of greens, 100% are of good quality based on the non-technical assessment criteria. It should be noted that for higher level competitive bowls, only good quality greens are considered appropriate under this assessment criteria.
- 10.8. Full details of the sites can be found in Table 86.

**Table 86: Bowls Sites in Redditch (clubs marked with a \* are not affiliated clubs)**

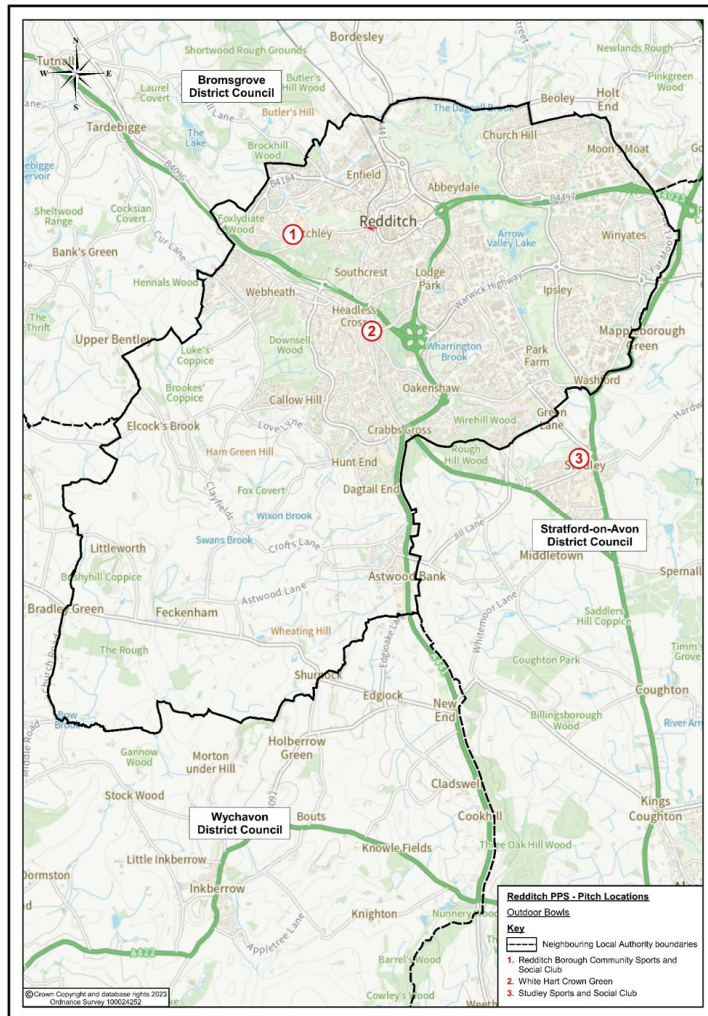
Site	Club Using Site	Ownership	Management	Security of Availability to Community	Greens	Rinks	Green Condition	Clubhouse Condition
Redditch Borough Community Sports and Social Club	Redditch Bowls Club	Sports Club	Sports Club	Yes	1	6	Good	Good
White Hart Crown Green	White Hart Crown Green Bowling Club	Local Authority	Sports Club	No	1	N/A	Good	Standard
Studley Sports and Social Club	Entaco Bowls Club	Sports Club	Sports Club	Yes	1	6	Good	Good

# Redditch Borough Council

## Playing Pitch Strategy – Stage C Assessment

10.9. Map 9 shows the geographic location of outdoor bowling greens across the Study Area and presents the dispersion courts across Redditch.

**Map 9: Outdoor Bowling Greens Audit in Redditch**



## Redditch Borough Council

### *Playing Pitch Strategy – Stage C Assessment*

#### Club and Site Consultation

- 10.10. Clubs were contacted by Strategic Leisure with the aim of informing the demand section of the study. Summaries of the information gathered during the Stage B process is provided in Table 87.

**Table 87: Selected Site and Club Consultation Summaries**

Site Name	Club	Consultation
Redditch Borough Community Sports and Social Club	Redditch Bowls Club	Excellent quality bowls facility, which is clearly well maintained. Situated on a multi-sport site with football and tennis. There are excellent ancillary facilities and ample parking. The club have 50 current members which is a 100% increase on membership three years ago. This is largely due to publicity, engagement with Bowls England's Big Bowls Weekend and a positive reaction from the community post-pandemic. The club are eager to increase the number of younger members and attract families, through outreach programmes and school visits. The current pavilion is undergoing redevelopment and the club have aspirations to improve the disability access and facilities.
White Hart Crown Green	White Hart Crown Green Bowling Club	Good quality green and standard ancillary facilities, adjacent to a community pub. The lease has expired on the site, and the club are seeking to renew and extend this for 25 years. There are 35 current members, and this has increased over recent years. The club has teams in WWBC and Southwest Birmingham leagues.
Entaco Bowls Club (Studley)	Entaco Bowls Club	Part of Studley Sports and Social Club which includes football, cricket and tennis provision on site. Good quality green with standard bowls ancillary facilities, including kitchen and bar. There are 70 members playing in both friendly matches and in Warwickshire and Worcestershire leagues. The club are eager to drive membership and participation.

#### Demand for Outdoor Bowls Facilities

- 10.11. This section summarises the level of demand for bowls in Redditch. Table 88 shows the demand for bowls in terms of the number of clubs assigned to each site.

**Table 88: Club Demand on Each Site**

Club Name	Affiliated to Bowls England / British Crown Green Bowling Association	Home Site	Members
Redditch Bowls Club	Yes	Redditch Borough Community Sports and Social Club	50
White Hart Crown Green Bowling Club	Yes	White Hart Crown Green	35

## Redditch Borough Council

### *Playing Pitch Strategy – Stage C Assessment*

Club Name	Affiliated to Bowls England / British Crown Green Bowling Association	Home Site	Members
Entaco Bowls Club	Yes	Studley Sports and Social Club	70
		<b>Total</b>	<b>155</b>

- 10.12. Table 88 shows that there are 155 members of bowling clubs in the study area with the most used site being Entaco Bowls Club with 70 members, followed by Redditch with 50 and White Hart with 35.
- 10.13. The Sport England Active Lives Survey results from November 2020-21 show that 0.4% of the population aged 16 or over in the West Midlands (the smallest area relating to the Redditch for which there is data available) play 'crown green' bowls at least once per year. 0.2% of the same population participated in 'flat green' bowls.
- 10.14. ONS' subnational population projections estimate the population of residents in Redditch aged 16 or over to be 68,295. If the participation figures for the West Midlands region (0.4% Crown Green and 0.2% Flat Green) are applied to this population figure, then it can be said that 273 people play crown green bowls at least once per year in Redditch. 137 people are predicted to participate in flat green bowls at least once per year. This leaves a total of 410 people playing either form of the game at least once per year.

### Demand for Outdoor Bowls Facilities

- 10.15. Using 410 as the number of people playing bowls at least once per year in Redditch and future projections of the Study Area's population (68,820 over 16's by 2040), we can calculate potential future demand for the sport. The future population is due to grow by 0.77% which, assuming current levels of participation remain constant, equates to an additional demand of 3 people.
- 10.16. Due to the fact that during consultation, all clubs highlighted that there was capacity for new members, we can assume that the demand for an additional 3 participants can be met by existing bowls provision.
- 10.17. This growth prediction is solely based on population growth and does not account for growth of the game due to new initiatives from NGBs.

### Bowls Summary

- 10.18. This section summarises the findings from the bowls analysis, which will form basis of the recommendation and action plan section for Redditch.
- 10.19. Table 89 includes the response to key questions, which are asked for all PPOSS studies across the UK, in order to provide a standardised illustration of supply and demand for sports provision.

# Redditch Borough Council

## *Playing Pitch Strategy – Stage C Assessment*

**Table 89: Key PPOSS Findings for Bowls in Redditch**

<b>Key Question</b>	<b>Analysis</b>
<b>What are the main characteristics of the current supply and demand for provision?</b>	There are currently 3 sites across Redditch with 3 greens in total. Each site is occupied by 1 club, with a total of 155 members.
<b>Is there enough accessible and secured community use provision to meet current demand?</b>	Two of the sites, Redditch Borough Community Sports and Social Club and Entaco Bowls Club are available and secured for community use. The White Hart is available for community use but has no security of tenure due to the lease having expired.  All clubs and sites highlighted through consultation that there was capacity for new membership, therefore we can assume that there is enough community available provision to meet the current demand.
<b>Is the provision that is accessible of sufficient quality and appropriately maintained?</b>	All three sites are rated as good quality with adequate maintenance schedules.
<b>What are the main characteristics of the future supply and demand for provision?</b>	Future population projections indicate a potential of 3 additional players by 2040. There are no proposed changes to the current provision. However, this growth is based on population growth only and does not consider any demand generated by initiatives or programmes from clubs or NGBs.
<b>Is there enough accessible and secured community use provision to meet future demand?</b>	The potential increase in demand of 3 participants by 2040 is able to be met by the current green and club supply.

## Disclaimer

Forecasts and recommendations in any proposal, report or letter are made in good faith and on the basis of the information before the Company at the time. Their achievement must depend, among other things, on effective co-operation of the Client and the Client's staff. In any consequence, no statement in any proposal, report or letter is to be deemed to be in any circumstances a representation, undertaking, warranty, or contractual condition.

© 2023 Strategic Leisure Limited  
All rights reserved