



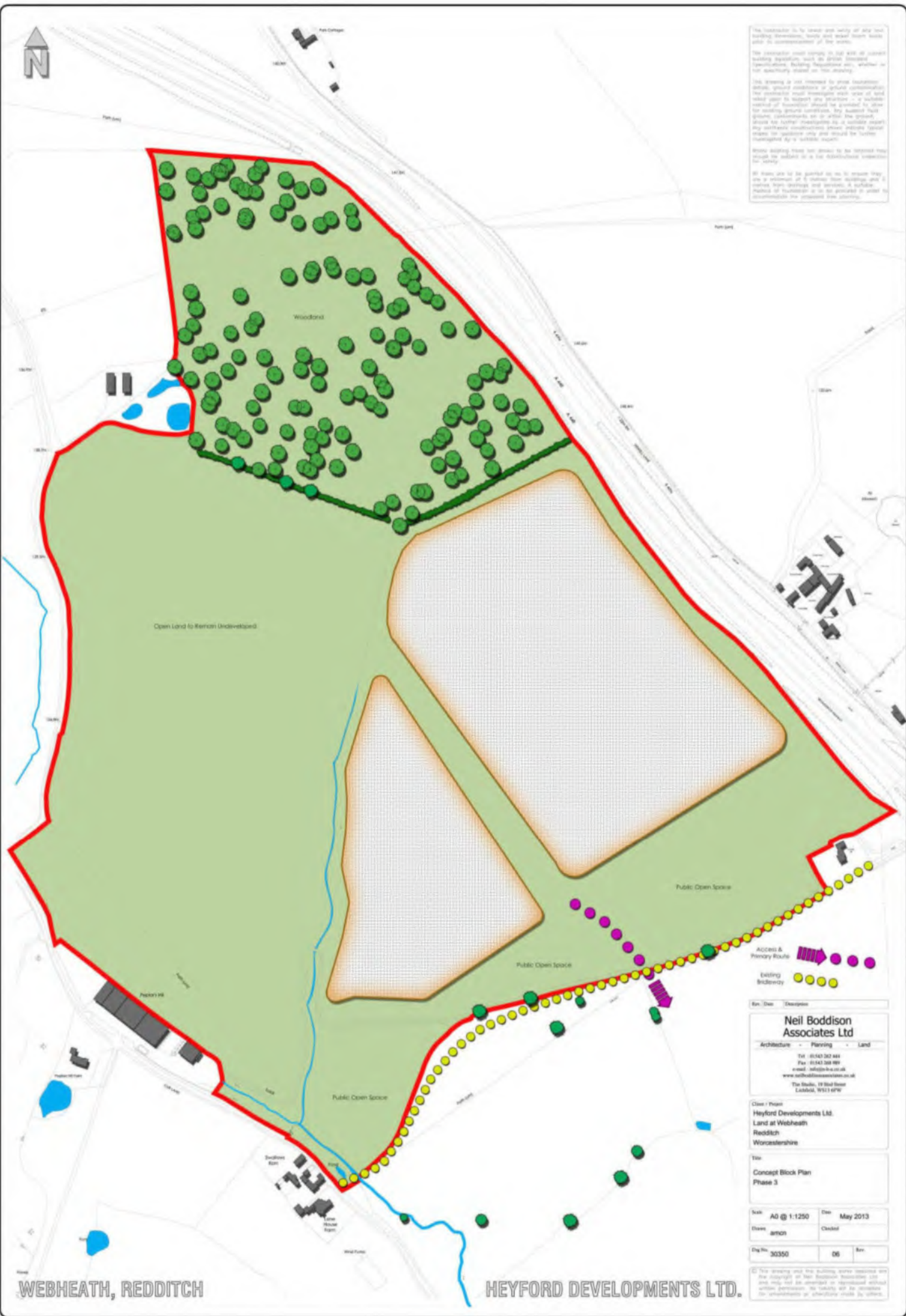
The Contractor is to ensure that safety of any new building foundations, walls and walls foundations are in accordance with the Code of Practice.

The Contractor shall ensure that all new building foundations, walls and walls foundations are in accordance with the Code of Practice.

This drawing is not intended to show foundation details, ground conditions or surface conditions. The contractor shall ensure that all new building foundations, walls and walls foundations are in accordance with the Code of Practice.

Before building starts the contractor shall be required to provide a full programme of works for the site.

All areas are to be provided for to ensure they are in accordance with the Code of Practice.



Rev. Desc. Description

Neil Boddison Associates Ltd
 Architecture - Planning - Land
 Tel: 01543 302 444
 Fax: 01543 302 880
 email: info@nba.co.uk
 www.neilboddisonassociates.co.uk
 The Studio, 19 Wood Street
 Leobald, W51 1 6PW

Client / Project
 Heyford Developments Ltd
 Land at Webheath
 Redditch
 Worcestershire

Title
 Concept Block Plan
 Phase 3

Scale AD @ 1:1250 Date May 2013
 Drawn amon Checked
 Drawn 30350 06 Rev.

© The drawings and this building were prepared and designed by Neil Boddison Associates Ltd and may not be amended or reproduced without written permission of the contractor. All rights reserved. For information on our services, please contact us on 01543 302 444.

WEBHEATH, REDDITCH

HEYFORD DEVELOPMENTS LTD.