



Important Council Tax
information inside



HOW YOUR MONEY IMPROVES YOUR BOROUGH



A message from the
Leader of Redditch
Borough Council,
Cllr Matt Dormer

From running
Redditch's beautiful
parks and woodlands,
to cleaning your
streets and managing
everyone's planning
applications and lots more

besides, the borough council does
a lot more than just empty your bin - and all for
just £5.18 a week.

This year we have focused the council on
delivering quality services efficiently. Many
key parts of our longer-term strategy to invest
in new and better services in Redditch that
reduce costs at source are coming to fruition.

For example, the Town Hall will take its next
major steps in its transformation into a multi-
agency Community Hub. By hosting other local
public services like the library as well as the
NHS and the council, we are all able to work
more closely together and provide better,
more convenient services at a lower cost than
before.

Of course that is a major council investment,
which you can read about in this leaflet. And
it's not the only one. Regeneration works
under the Town Improvement Plan continue
to progress. For example work to regenerate
the former police station into a new digital
innovation centre, where our businesses can
focus on the modern digital economy in the
heart of Redditch and create jobs, is already
under way. And I am proud to see work starting
on our new green cemetery, which will ensure
people in Redditch will still be able to choose
to be laid to rest here, for generations to come.

It continues to be a challenging financial
environment in general, and the borough
council is feeling the pinch like everywhere
else. But we are pleased to show the vision and
the leadership in Redditch to steer the council
into a solid financial position. That helps us
continue the work to protect and enhance our
services to you, and keep on improving the
borough for everyone.

Useful contacts:

Main Council Contact: 01527 64252.
Emergency out of hours: 01527 67666

Benefit enquiries: 01527 534050
hbenefits@redditchbc.gov.uk

Business Rates: 01527 534023
businessrates@redditchbc.gov.uk

Council Tax: 01527 534040
counciltax@redditchbc.gov.uk

Environmental Services:

*Including - bin queries, domestic waste,
business waste, assisted collections,
garden waste, septic tank and cesspool
emptying, litter, landscape and trees,
street cleaning, MOT testing and more.*
01527 881188

bsu@bromsgroveandredditch.gov.uk

Freedom of Information: 01527 64252
foi@redditchbc.gov.uk

Gas Repairs and Maintenance:

01527 548267 or
01527 64252 ext. 2656

Housing Repairs:

01527 534074
Emergency Out of Hours 01527 67666

Housing Revenue: 01527 587000
housingrevenue@redditchbc.gov.uk

Planning Enquiries: 01527 881770
newplan@bromsgroveandredditch.gov.uk

Room Bookings: 01527 881478
roombookings@
bromsgroveandredditch.gov.uk

**Starting Well Partnership (support for
families 0-19yrs):** 01905 520032

Worcestershire Regulatory Services:

*Including - Licensing, Food Hygiene,
Taxis, Environmental Health, Dog
Wardens, Pest Control etc.*

More details available here:
www.worcsregservices.gov.uk
01905 822799

enquiries@worcsregservices.gov.uk

Where your money goes

Redditch Borough Council keeps less than 12p of every pound you pay in Council Tax, which helps pay for the services it provides. The rest is charged by other agencies for their services: police, fire and rescue, county and parish councils, and the government.



Worcestershire County Council
£1,538.92* | 4.99% increase



Police and Crime Commissioner for West Mercia
£277.50* | 4.91% increase



Redditch Borough Council
£269.58* | 2.99% increase

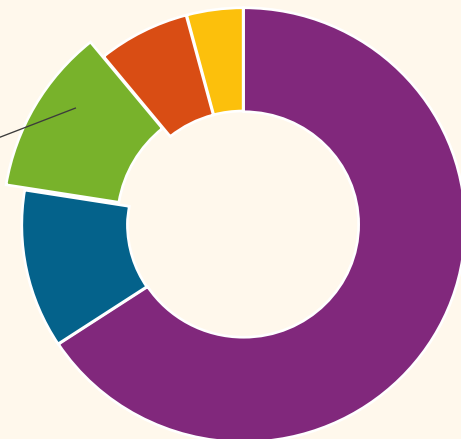


Feckenham Parish Council
£157.77* | 200% increase



Hereford and Worcester Fire and Rescue
£97.22* | 2.99% increase

***AVERAGE BAND D COUNCIL TAX**
Total £2,340.99 | 9.4% increase



How we will spend your money

This year the borough council will spend £11.182m on delivering the council's key priorities:

- Economic Development and Regeneration
- Housing Growth
- Work and Financial Independence
- Improved Health and Wellbeing
- Community Safety and Anti-Social Behaviour
- Green Thread
- Financial Stability
- Organisational Sustainability
- High Quality Services

How that's financed

The money to pay for those services comes from three main sources: 11.5% of your Council Tax, business rates set by the government, and funding from the government.

| Net corporate resources | £ million |
|-------------------------|---------------|
| Net Business Rates | 3.266 |
| Net Council Tax | 7.094 |
| Government Funding | 0.822 |
| Total | 11.182 |

Capital spending

Capital spending is the money we spend on things like buildings and vehicles.

A £20.5m capital programme this year will be mostly spent on a Digital Innovation and Manufacturing Centre to regenerate the now-vacant police station site, regeneration of the soon-to-be vacant library site, and the next phase of refurbishments to transform the Town Hall into a multi-agency Community Hub. Most of the money for this is coming from the government's Towns Fund, or capital receipts from other property that the council is selling.

Elsewhere we'll be refurbishing some of the big fleet of vehicles that we use to collect rubbish to keep them in good condition (£9m over 5 years), investing in Arrow Valley Country Park (£457,000), doing planned maintenance on public buildings (£250,000), car parks (£150,000), and footpaths (£75,000), and buying some replacement wheeled bins (£100,000).

Big projects

The big capital projects are a major focus this year - but they aren't the only ones.

Improved online services

With more people using the internet to get more things done more often than ever before, we're building better ways for you to access services online, while protecting the council and all our residents' data from cyber criminals. Look out for some small but significant improvements this year to how our digital services work.

Regenerating Redditch: Digital Manufacturing and Innovation Centre

Work to regenerate the vacant police station site will gather pace this year. Look out for the end of demolition works there ahead of the planned innovation centre. This £8m project is being paid for by the government's Towns Fund as part of Redditch's Town Investment Plan and delivered by the borough council.

Read all about the Town Investment Plan, a Redditch Town Deal Board project, at redditchtowndeal.co.uk



Did you know: to make this happen, the council swapped some land on Middle House Lane that the police needed for their new blue light hub with the fire service, for the old police station. The swap was part of multi-agency 'One Public Estate' work which also produced the community hub, enabled both projects, and helped Redditch secure the £8m for the new centre.

The Community Hub

Already home to borough council and NHS services, 2024-25 will see major works begin to bring in County Council library services and more to the hub. Projected to save £490,000 a year, this £6.2m project is being funded by the sale of other surplus council property plus a loan from the Public Works Board. It'll see our customer services temporarily relocated to the Kingfisher Shopping Centre, so look out for more on that this year.



Other ways your money improves Redditch

- Our new, expanded garden waste service this year, launched in response to community demand, is helping more people recycle even more of their waste more conveniently.
- This year we'll empty about two million bins in Redditch and maintain the trees, hedges and cleanliness of hundreds of miles of borough streets. Let's keep Redditch looking good!
- Through Redditch Homes, our local housing register, we will help about 10,000 people access support for their social housing needs. Not to mention all our other housing services, from supporting people facing homelessness to those whose private landlords aren't doing what they should.
- A brand new, clearer tenancy agreement for our own nearly 6,000 council housing tenants will herald a new relationship between council and tenant, for more fairness, accountability, and safer communities.
- Our new cemetery at Ipsley Meadow will provide people in Redditch with somewhere to be buried in the borough for another 80 years. We're working with the Woodland Trust to make it truly green.
- For all these and more, visit www.redditchbc.gov.uk

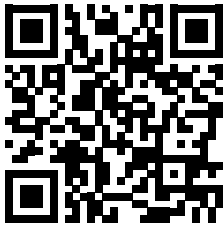


Cost of Living



We know times are hard right now. That's why the borough council and lots of other local agencies are working together to connect you to the surprising range of support that is available.

Even if you don't claim any benefits, you may be entitled to support you weren't aware of - and not just monetary support, but good advice from legitimate sources you can trust.



For an easy-to-find collected list of key support and advice services that are available from a range of local partners, head to:
www.redditchbc.gov.uk/costofliving.

We regularly update the information there, so you will often find new things alongside services that are already available from us or a range of other agencies - all with a focus on supporting people in the borough with the cost of living.

Let's work together: Please share information with friends, neighbours and colleagues



NEW
lifeline

Technology Enabled Care



**Providing peace of mind 24
hours a day 365 days a year**

Support to live independently at home from NEW Lifeline.

- Portable pendant to call for help in an emergency at any time, day or night
- Monitoring Centre Operators will receive the call and assist
- A digital Lifeline unit with inbuilt connectivity. Ideal for those who have a recently upgraded phone service or who don't have a telephone line.
- Many extra features available: fall detection, emergency location pinpointing, mobile version that even works away from home



Contact us on **01527 534060**
or **lifeline@bromsgroveandredditch.gov.uk**

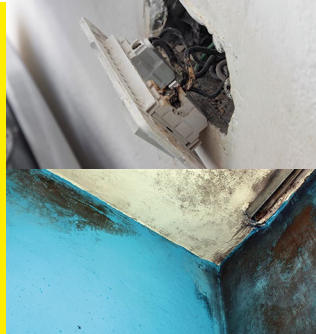


Certified Organisation

**Do you have problems with your rented
accommodation in Redditch?**



**Poor living conditions
Harassment
Cold and damp
Illegal eviction
Tenancy rights
High bills
No smoke alarms
Overcrowding**



WE CAN HELP YOU

For advice and assistance call

01527 881601

Alternatively you can visit:

www.redditchbc.gov.uk/report-it

REDDITCH BOROUGH COUNCIL

*making
a
difference*

www.redditchbc.gov.uk

Dial-A-Ride



For door-to-door trips if you can't use public transport

Wheelchair accessible, friendly, reliable service



- > **SHOPPING**
- > **VISITS**
- > **MEDICAL NEEDS**
- > **TRAVEL CONNECTIONS**

REGISTER NOW

to book weekday daytime journeys in the Borough

Contact us on 01527 64910 or dialaride@redditchbc.gov.uk.



NEW EXPANDED Garden Waste service

NOW ACCEPTING NEW CUSTOMERS

Limited availability: apply now

20 collections, March - November

Just £60 per bin (£20 startup fee)

www.redditchbc.gov.uk/gardenwaste



- 240l wheeled bins collected fortnightly
- Sign up for one or more bins
- Service runs w/c Feb 26 or Mar 4 until w/c Nov 22 or 29 (depending on your bin day)



Building Control made simple



A Customer focussed service driven by **Quality** not Profit.

Publically accountable

Readily available surveyors/same day services

Local knowledge

Fast and efficient service with fully qualified
surveying teams

Do you have knee,
hip or back pain?

escape pain

Join our ESCAPE-pain class, meet other people living with osteoarthritis and learn:
- information and simple ways to better manage knee, hip, and back pain.
- A gentle, individualised exercise programme that matches your needs and pace

Class Details



Venue: The Abbey Stadium, Redditch



Day/ Dates: Wednesdays and Fridays



Time: 2:30pm to 3.30pm

Duration: 12 sessions over 6 weeks

Starting: Courses running throughout 2024

SCAN TO
REGISTER



How do I sign up?

Complete a registration form at
ESCAPE-pain - redditchbc.gov.uk
or call 01527 881404



SUPPORTED BY
REDDITCH BOROUGH COUNCIL



Live Well, Be Well

At the Abbey Stadium, Redditch

An individually tailored programme of
physical activity for people living with
one or more health conditions

A qualified exercise professional will:

- Be on hand for 1-2-1 consultation

To include:

- Full leisure centre membership
- Access to 20+ community exercise sessions

For only £25.00 you will receive a 6 week programme, full leisure
centre membership and access to 20+ community sessions.

To self-refer go to redditchbc.gov.uk/livewellbewell

For more information about course dates and content
please contact Hayley Gwilliam email [hayley.gwilliam@
bromsgroveandredditch.gov.uk](mailto:hayley.gwilliam@bromsgroveandredditch.gov.uk) or 01527 881404



Bring
photo ID
to vote in
elections

Don't have ID?

Apply for free voter ID.

For more information, visit

electoralcommission.org.uk/voterID

WARD BOUNDARIES IN REDDITCH HAVE CHANGED.



**This means your
polling station may
also be different,
please make sure
you double check
your polling card
when it arrives!**

You can check your new boundaries here:
www.lgbce.org.uk/all-reviews/redditch

Kerbside Recycling Quick Guide



You can recycle



- 1. Plastic bottles**
e.g. Shampoo bottles
- 2. Plastic pots**
e.g. Yoghurt pots
- 3. Plastic tubs**
e.g. Quality Street tub
- 4. Plastic trays**
e.g. Meat trays and fruit punnets
- 5. Aerosols**
e.g. Deodorant cans
- 6. Food tins**
e.g. Baked beans
- 7. Drinks cans**
e.g. Fizzy drink cans
- 8. Cartons**
e.g. Tetra Pak
- 9. Cardboard**
Flatten boxes, no glitter
- 10. Paper**
No glitter or foil wrap
- 11. Glass bottles**
All colours
- 12. Glass jars**
All colours

All items must be rinsed clean and be loose in your green bin so it can be sorted

If it isn't on the list above we can't accept it in the green bin

You cannot recycle



- 1. Food waste**
- 2. Nappies**
- 3. Sanitary items**
- 4. Crisp packets**
- 5. Plastic wrappers**
- 6. Black plastic**
- 7. Wet wipes**
- 8. Tissues, kitchen and toilet roll**
- 9. Polystyrene**
- 10. Animal litter and bedding**
- 11. Plastic bags**

Put all these things in your black bin.

Why it's important that we try to put the right things in the right bin:

- Items cannot be recycled if they are in the wrong bin;
- If you put non-recyclable items (i.e. food waste) in your green bin you may contaminate other items;
- It makes the recycling harder to sort and process.

Remember: Right thing, right bin. Clean & loose.

LET'S
WASTE
LESS

For more information on what to recycle and how to reduce your waste, visit: [letswasteless.com](https://www.letswasteless.com)

Worcestershire Starting Well

Service 0 - 19



Starting Well Partnership
EVERY CONTACT SHAPES A LIFE

Groups for Parents & Carers

Being a parent can be tough! We all need a little support along the way. We have a range of behaviour and development support groups for parents and carers with children pre-birth to 19 years.

Call our friendly Starting Well team to find out more on **01905 520 032**.

Childcare Choices Looking for help with your childcare cost?

Please go to www.childcarechoices.gov.uk or call us on **01905 520 032**.

Need support breastfeeding?

For further information and details on the peer support group, contact the Starting Well Breastfeeding Support Team via email: whcnhs.breastfeedingsupport@nhs.net or visit the Starting Well website www.startingwellworcs.nhs.uk

Healthy Start Vitamins

Healthy Start



FREE Healthy Start vitamins if you're pregnant and until your child is 12 months old - or if they're receiving Healthy Start vouchers, until they're four. To apply and find out more, go to www.healthystart.nhs.uk

To find out more

Find us on social media:

@StartingWellIRB

@BgroveandRditch

Scan the QR code to visit our website startingwellworcs.nhs.uk



Volunteering opportunities

We are looking for volunteers and peer support workers to support the delivery and administration of our groups and services. Our invaluable volunteers are important team members and benefit from developing confidence and skills, with full training and ongoing support. For an informal chat contact Peer Support & Volunteer Co-ordinator Ruth Harper on **07833933791** or ruth.harper@bromsgroveandredditch.gov.uk www.startingwellworcs.nhs.uk/volunteering

Telephone Advisory Service (TAS)

To speak with a member of the Health Visiting team for advice on any worries or concerns you might have about your child's development up to age 5, including feeding, behaviour, toileting and sleeping, just call TAS on **01905 520 032** (Monday-Friday, 9am-1pm)

Your local hubs are:

Bromsgrove -
Pear Tree Family Hub,
Broad St, Bromsgrove,
B61 8LW

Redditch -
Holly Trees Family Hub,
St Stephen's First
School, Mabey Ave,
Riverside, Redditch,
B98 8HW

We can help signpost you to local services.
Tel: **01905 520 032**



Understanding your...

Pregnancy | Baby | Child | Child with additional needs | Teenager | Relationships | And more

Pre-paid online courses for you!

- Visit www.inourplace.co.uk
- Enter code **PARENTSROCK**
- Begin learning

www.startingwellworcs.nhs.uk

EVERY CONTACT SHAPES A LIFE

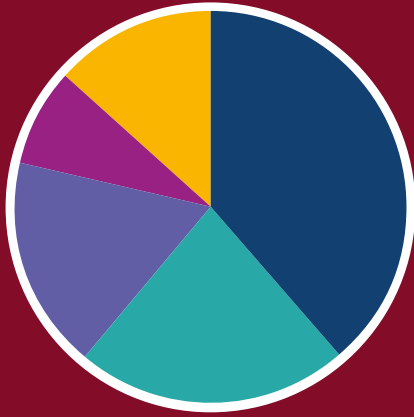
Provided by:



In partnership with:



Worcestershire County Council Budget 2024/25



2024/25 expenditure

- Adult Social Care, Public Health and Communities (**£168m**)
- Children's Services (**£97m**)
- Economy, Infrastructure and Environment (**£76m**)
- Home to School Transport (**£35m**)
- Support Services including Finance and Legal (**£57m**)

Total: **£433m Net budget**

We also have a capital programme and continue to invest in what you have told us is important:

A total of **£34m** to improve roads and **£6m** to improve pavements this year.



£78.8m on improving and building new schools including Foxlydiate in Redditch.

£20.2m on walking and cycling improvements include Hampton and Kepax bridges.



£53m on cutting congestion and infrastructure improvements including A38 in Bromsgrove.



£17.3m to improve rail station facilities.



£4.6m to continue with our street light improvement programme.



I know the last year has been a difficult one for many. The Council has faced similar challenges too from the impact of inflation on costs and increasing demand for services which have added significantly to our budget pressures.

With more vulnerable people needing our support, and with the cost of this care increasing significantly, we have needed to increase our budget this year to ensure we can continue to provide these essential services.

The Government is providing additional funding and we are reforming the way we work to deliver savings and efficiencies. However, this is not enough to meet the budget pressures and therefore we need to increase Council Tax to be able to adequately fund these services.

Our Council Tax will though remain one of the lowest of any comparable County Council in the country.

The additional funding will mean we can continue to deliver vital children's and adult social care to protect the most vulnerable in our society, on which we now spend over 70% of our revenue budget.

It will also enable us to maintain our commitments to invest in the priorities that you have told us are most important. These include better roads and pavements, tackling congestion and improving public transport alongside investments in the economy, environment and extra school places.

Kind regards,
**Councillor Simon Geraghty, Leader of
Worcestershire County Council**

With a gross budget from Council Tax, Government Grants and other income we will be spending a record amount to help protect the most vulnerable people in our communities:






£295m for those who need Adult Social Care in 24/25



£177m to improve the lives of Children and Young People



£91m to support people to live independently for longer through Public Health and Communities

-  www.worcestershire.gov.uk
-  /YourWorcestershire
-  @worccsc and @worcstravel
-  @YourWorcestershire
-  Search Worcestershire County Council

Council Tax Valuation

Most owned or rented dwellings are subject to Council Tax, the amount you pay depends on the value of your property. The Valuation Office Agency (VOA) has placed each dwelling in one of eight valuation bands. These bands are based on the price a property would have fetched if it had been sold on 1st April 1991. Any increase or fall in a dwelling's value since then will not affect your Council Tax band.

Please note that the VOA has assessed the value of the properties and not the council. Your Council Tax bill tells you which band your dwelling is in. You can appeal against your valuation if:

- There is a material increase or reduction in the value of the dwelling
- You start or stop using part of the dwelling for business
- You have just moved in, but you must appeal within 6 months of your move
- The listing officer alters the band

If you think your band is wrong, please visit www.voa.gov.uk

Discounts

The full Council Tax bill assumes that two adults live in a dwelling. If you are the only adult living in a property, your Council Tax bill will be reduced by 25%. You may also be eligible for a 25% discount if you or someone that lives with you falls into one of the following categories:

- A full time student, student nurse, apprentice, youth training trainee, or a non-British spouse/dependant of a student
- A permanent resident in a hospital or care home
- A person who is severely mentally impaired
- A person resident in a hostel or night shelter
- A person who is 18 or 19 years old and has just left school or college
- A resident care worker who is paid no more than £44.00 per week to provide care to the person they live with.
- A person caring for someone with a disability who is not their spouse, partner or child under 18 years of age.
- A member of visiting overseas forces, certain international institutions or certain religious communities.
- A person who is in prison (except those in prison for non-payment of Council Tax or a fine)
- A diplomat or member of an international organisation with UK headquarters

Empty Home Discounts

A discount of 100% is applicable for the first 14 days in which a property is unoccupied and substantially unfurnished. After this 14 day period the charge will be 100%. Entitlement to the discount begins on the date the property first becomes unoccupied and unfurnished and in order for a new period of discount to be granted there must be a minimum period of occupation of 6 weeks.

Long Term Empty Property Premiums

Dwellings that have been unoccupied and unfurnished for one year, and are not subject to a statutory exemption, will have an additional premium of 100% council tax applied to them. Properties that have been empty for over five years will have an additional premium of 200% added to the council tax bill. Properties that have been empty for 10 years or more will have an additional premium of 300% added to the council tax bill

Exempt Dwellings

The list below is a summary of properties that are exempt from Council Tax:

- Left empty by students or school leavers
- Left empty by someone who has gone into prison or moved into a hospital, a residential care home or elsewhere to receive care
- Left empty by someone who has moved elsewhere to provide care for someone
- Empty and waiting for probate or letter of administration to be granted. Exempt for up to six months after the grant is made, then 100 percent charge applies
- Left empty by someone who is bankrupt or properties repossessed by a mortgage lender
- Occupied only by people under 18
- Occupied only by people who are severely mentally impaired
- Occupied only by students, or student halls of residence
- An unused caravan pitch or boat mooring
- Properties where occupation is prevented by law or by the actions of a local authority
- Waiting to be occupied by a minister of religion
- Part of a dwelling, such as an annexe or granny flat, which is empty and may not be let separately to the main home
- Occupied by members of visiting forces, certain international organisations, a foreign diplomat, or member of an international organisation with headquarters in the UK.
- Owned by the ministry of defence and held available for service personnel
- Any part of a property, such as an annexe or granny flat, which is occupied by a dependant relative of the family resident in the other part.
The relative must be either; over 65 years of age, severely mentally impaired, or substantially and permanently disabled.

Disabled Person Reduction

If you or someone who lives with you is disabled and because of their disability needs extra space in your property, such as an extra kitchen or bathroom or extra space because they use a wheelchair indoors, then you may be entitled to a reduced Council Tax bill. Contact us for more information.

National Discount for Annexes

If your property includes a main home and an annexe then you would usually pay Council Tax for both the main home and the annexe. You can now receive a 50% Council Tax discount for the annexe provided that it is either used by the resident of the main home as part of their home or it is used as the sole or main residence of a relative of the person living in the main home.

Local Council Tax Support

Council Tax Support – can provide help with some or all of your Council Tax. Whether you get help depends on your personal circumstances and your income and savings. Generally the more income and savings you have the less likely you are to qualify for help.

To claim you will need to complete a claim form, available from our website.

Discretionary Reductions

The council has a discretionary power to reduce the amount payable. The Council Tax can be reduced by any amount and the power can be exercised on a case-by-case basis or by determining a local discount.

A decision to reduce Council Tax using this power would usually only be made in exceptional circumstances.

Claiming Discounts, Exemptions and Reductions

If you think that you are entitled to a discount, exemption or reduction and it is not shown on your bill then please contact us.

If your bill shows a discount, exemption or reduction to which you are not entitled then please let us know straight away. If you do not let us know then you may have a penalty of £70, if you continue to fail to provide us with the correct information then you may have to pay a further penalty of £280.

Instalment Scheme

Your Council Tax is normally payable in 10 instalments; you have the right to request payment in 12 instalments. If you would like to pay in 12 instalments then you must request this in writing and the request must be received by the 15th April, however we recommend that you contact us by telephone to discuss switching.

Appeals

You can appeal if you consider that you are not liable to pay Council Tax – for example because you are not the resident – or because you believe your property is exempt. You can also appeal if you believe that we have made a mistake by not giving you a discount, or reduction to which you believe you are entitled.

Making an appeal does not allow you to withhold payment of Council Tax and you should continue to pay as requested in your latest Council Tax demand. If your appeal is successful any overpayment will be refunded to you.

Any appeal must be made in writing, we will then respond to you within 2 months, If you disagree with our response, or if we do not reply within 2 months then you may appeal directly to the Valuation Tribunal. Details are available on request from us or the Tribunal Office, Hepworth House, Unit 2 Trafford Court, Doncaster, DN1 1PN.

Adult Social Care Information

The Secretary of State made an offer to adult social care authorities. (“Adult social care authorities” are local authorities which have functions under Part 1 of the Care Act 2014, namely county councils in England, district councils for an area in England for which there is no county council, London borough councils, the Common Council of the City of London and the Council of the Isles of Scilly.)

The offer was the option of an adult social care authority being able to charge an additional “precept” on its council tax without holding a referendum, to assist the authority in meeting its expenditure on adult social care from the financial year 2016-17. It was originally made in respect of the financial years up to and including 2019-20. If the Secretary of State chooses to renew this offer in respect of a particular financial year, this is subject to the approval of the House of Commons.

Financial Information

Information relating to the relevant and previous financial years in regard to gross expenditure of the billing authority, precepting authorities and any body that has issued a levy on the billing authority or the precepting authority is available at www.redditchbc.gov.uk/council-tax-info

A hard copy of the information is available where requested in writing.

Enquiries About Your Bill

If you have any questions about your Council Tax bill:

Write to: Revenue Services, Redditch Borough Council, Town Hall, Walter Stranz Square, Redditch, B98 8AH

Call: 01527 534040 between 9am and 5pm (10am and 5pm Tuesday)

Email: revenues@redditchbc.gov.uk

Visit Website: www.redditchbc.gov.uk

MORE POWER

NOW LIVE:
System upgrade
for 2024

at your fingertips

Tap to connect **DIRECTLY** to our front line street cleaning staff in your area



REPORT ISSUES

REQUEST SERVICE

STRAIGHT TO PEOPLE ON THE GROUND

IT'S NEVER BEEN EASIER.

Just head to

www.redditchbc.gov.uk

REDDITCH BOROUGH COUNCIL

*making
a
difference*

www.redditchbc.gov.uk